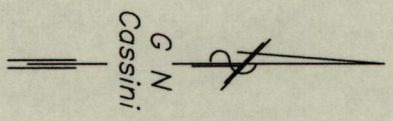
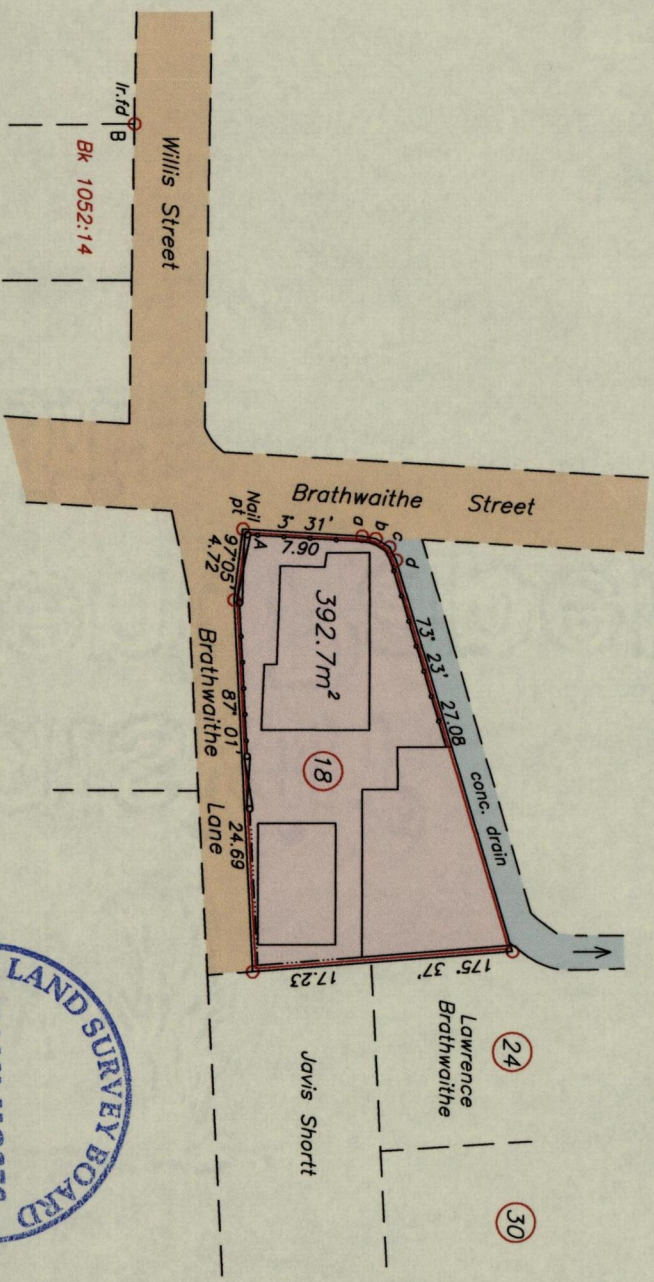


TO BE BROUGHT UNDER THE PROVISIONS OF  
THE REAL PROPERTY ORDINANCE  
Process ID # 52815

Cadastral Sheet G.13.E 13E  
3/a  
City of Port of Spain  
County of St. George



Ref.  
Bk. 961 Fol. 44

Legend

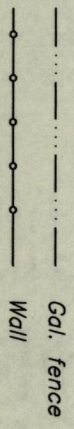
B - A	74' 55"	27.85
a - b	10' 22"	0.91
b - c	31' 51"	1.06
c - d	62' 12"	0.98

A - N 1179658  
E 663825  
Derived From Hand-Held GPS (+/-5 m)  
UTM Zone 20 Naparima Co-ordinates



SCALE 1:500  
Distances are in METRES

o Bearings are Cassini Grid based on Solar Observations  
Denote Iron put unless otherwise stated



Approved .....  
Director of Surveys *Trivick*  
Plan of a Parcel of land coloured pink in the City of Port of Spain  
Containing three nine two point seven square metres  
Surveyed by me, with due authority, on 17th February, 2011 for Dolly Khartoon Singh  
In accordance with Regulation 25 (1) of the Land Surveyors' Regulations 1998,  
I certify that this Plan is correct.

Checked by *PA. 2012. 02. 21*  
Entered on .....

*Brian Moses*  
Trinidad & Tobago Land Surveyor (T.I.L.S.)  
30th April 2012