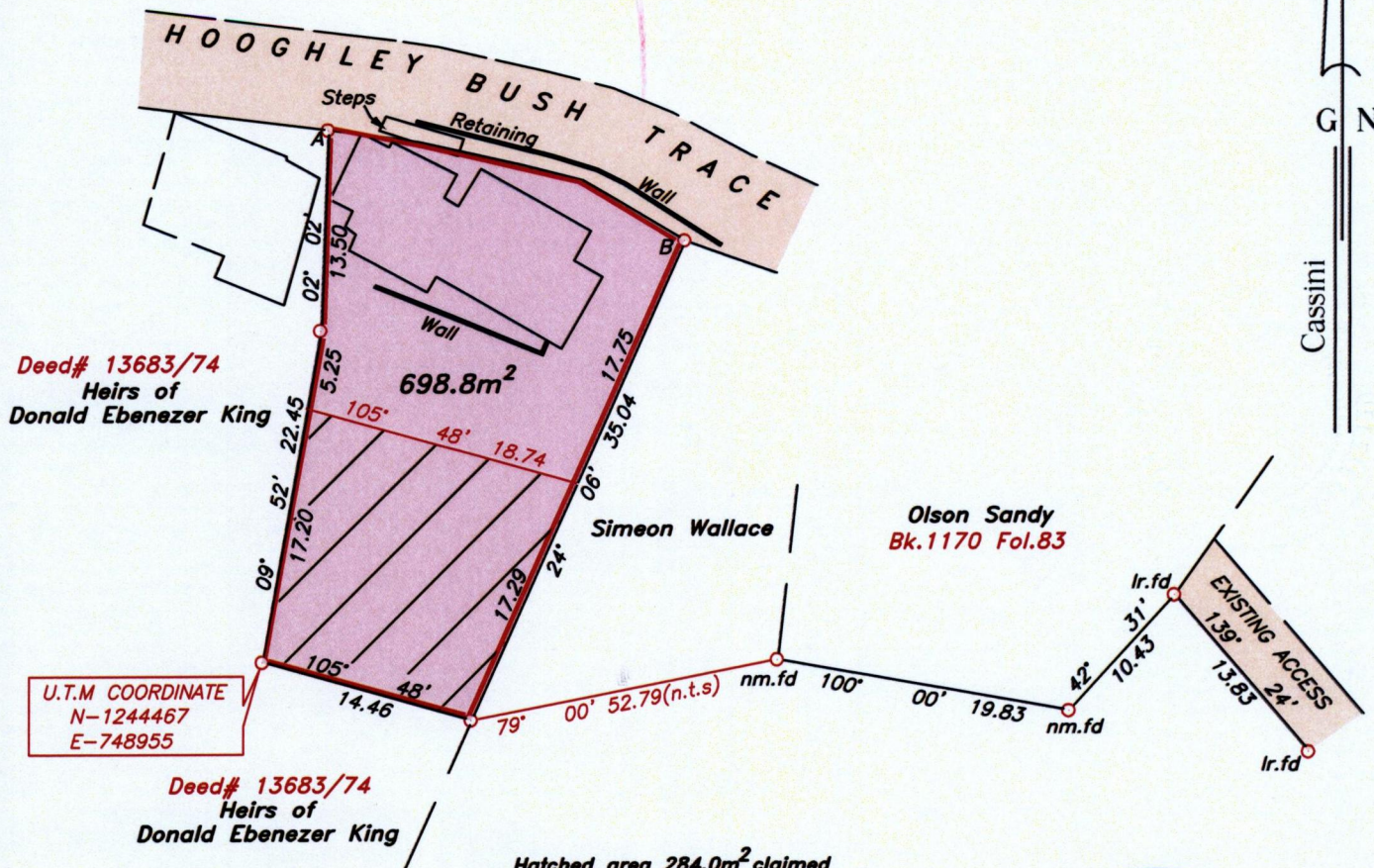


U.P.R.N.....
To be brought under the provisions
of the REAL PROPERTY ORDINANCE

Cadastral Sheet I.12.H
Ward of Tobago
Parish of St. David
MORIAH



U.T.M COORDINATE
N-1244467
E-748955

Hatched area 284.0m² claimed
by Heirs Donald Ebenezer King

LEGEND

LINE	DIRECTION	DISTANCE
A-B	107° 34'	25.07



Note- U.T.M Zone 20 (WGS 84) Coordinantes obtained
from hand held GPS receiver
± 1m

Approved *Seymore Alfred*
Director of Surveys *12/6/12*

○ Denotes iron put, except otherwise stated.

SCALE 1:500

Bearings are grid based on solar observations Distances are in metres

PLAN of a parcel of land coloured pink in the Ward of Tobago
Containing six hundred and ninety eight point eight square metres.
Surveyed by me, with due authority on 9th May 2012 for Mary Plante

In accordance with Regulation 25 (1) of the Land Surveyors' Regulations 1998, I certify that this
plan is correct.

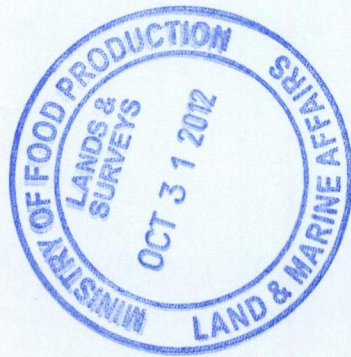
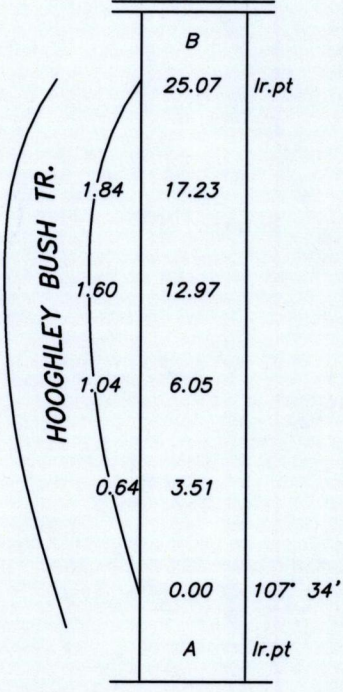
Checked by *MM 5/6/2013*
Entered

Seymore Alfred

Trinidad & Tobago Land Surveyor..... *23rd May*2012.
Path: \\Aasi-server\2012survey\P175\M PLANTE.DWG

158

737



1434/129