

1434

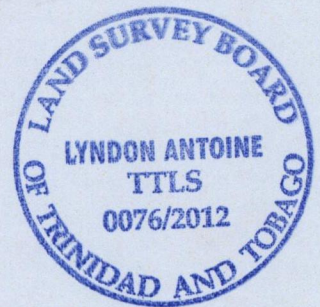
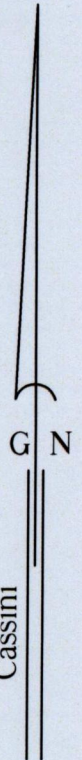
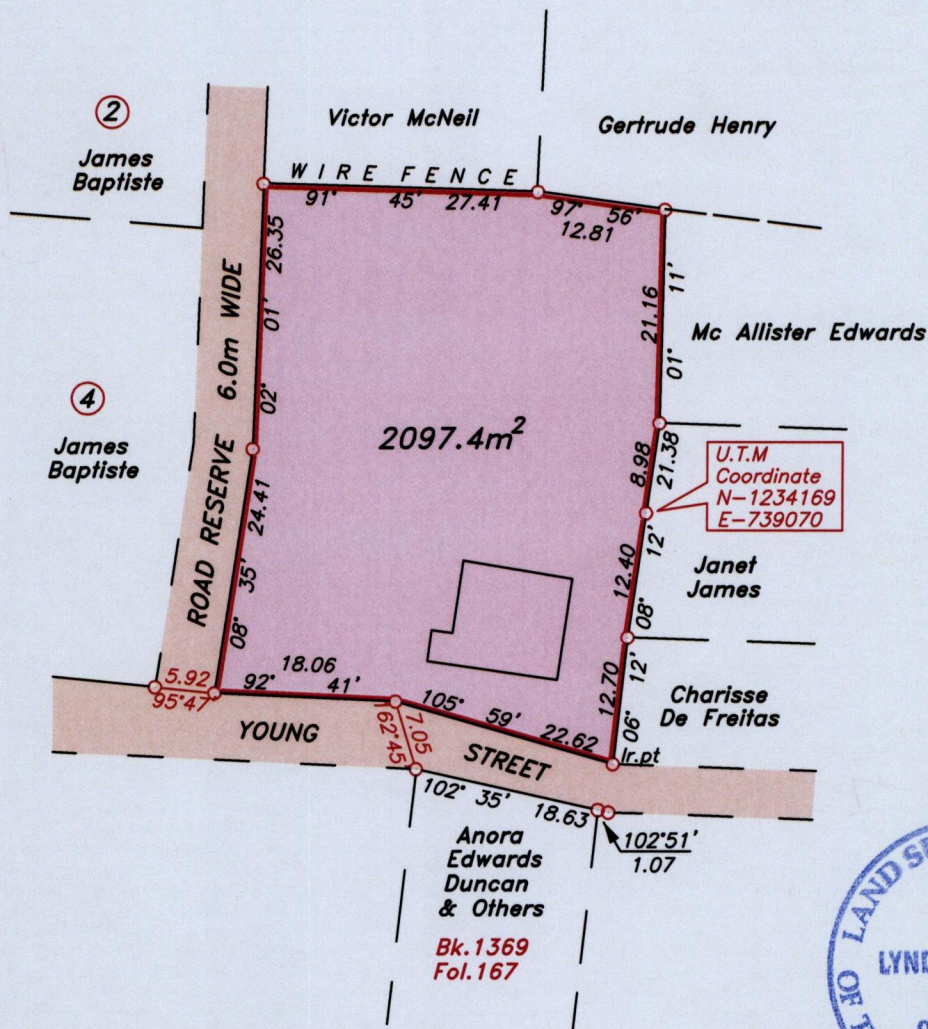
1434/126

126

U.P.R.N.....
To be brought under the provisions
of the REAL PROPERTY ORDINANCE

Cadastral Sheet *I.21.C* $\frac{1E}{6/b/4}$
Ward of *Tobago*
Parish of *St. Patrick*
CANAAN

Vide Bk.1114 Fol.219



Note- UTM Zone 20 (WGS 84) Coordinates obtained from hand held GPS receiver
+ 5.00m
- 5.00m

Approved *Lyndon Antoine*
Director of Survey
13/6/13



SCALE 1:750

Bearings are grid based on solar observations

Distances are in metres

PLAN of a parcel of land coloured *pink* in the Ward of *Tobago*
Containing *two thousand and ninety seven point four square metres.*
Surveyed by me, with due authority on *2nd October 2012* for *Eudris Turner & Donald Turner*
Certified Correct in accordance with Regulation 25 (1) of the Land Surveyors Regulations 1998.

Checked by *MMW. 5/4/2013*
Entered

Lyndon Antoine
4th December 2012

Trinidad & Tobago Land Surveyor..... 2012.