

1434

1434/124

124

U.P.R.N. No.

Cadastral Sheet I.19.B.

Ward of Tobago

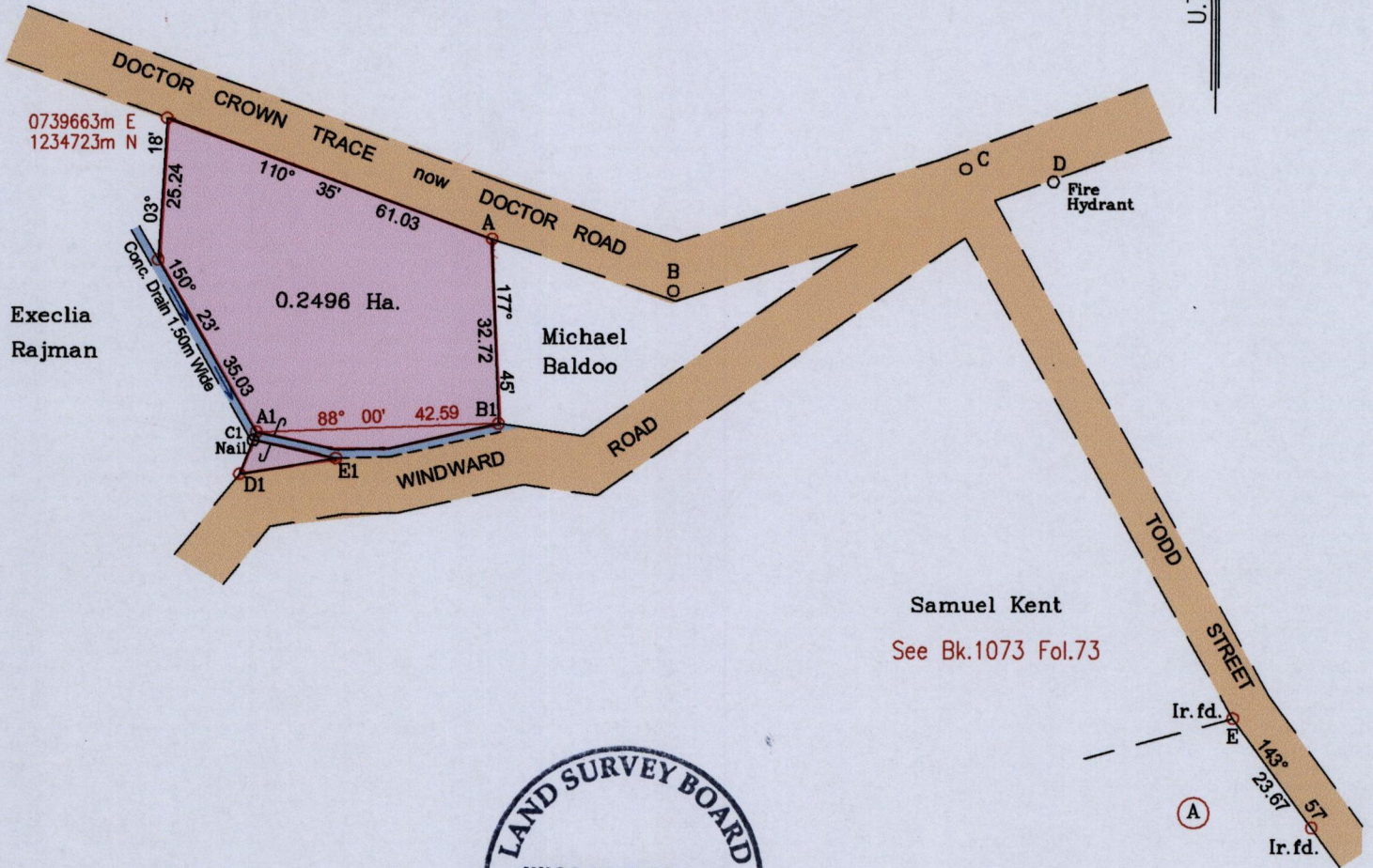
Parish of St.Mary

To be brought under the provisions of the  
Real Property Ordinance.

"Goldborough Estate"

G. N.

U.T.M.



Execlia  
Rajman

Michael  
Baldoo

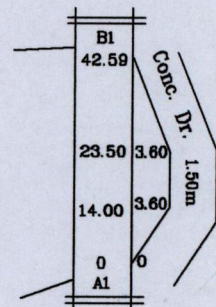
Samuel Kent

See Bk.1073 Fol.73



U.T.M. Zone 20,WGS84(+/-5.0m)  
Hand Held G.P.S. Coordinates

A1-C1	201° 29'	1.52	A-B	106° 07'	33.34
C1-D1	201° 29'	6.47	B-C	67° 09'	55.89
D1-E1	80° 32'	17.14	C-D	98° 25'	15.59
E1-C1	282° 25'	15.31	C-E	153° 58'	107.99



Approved.....  
Director of Surveys *A 13/6/12*

○ Denotes Iron put except where otherwise stated  
Bearings are U.T.M. Grid based on Solar Observations

SCALE 1/1250  
Distances are in metres

Plan of a Parcel of land coloured pink in the Ward of Tobago  
Containing zero point two four nine six hectares

Surveyed by me,with due authority, on 1st May 2009 and 7th August 2010 for Len Frederick

In accordance with regulation 25 (1) of the Land Surveyors' Regulations 1998,

I certify that this plan is correct.

Checked by *mm 13/4/2013*

Entered on.....

*Hug Somarsingh*

Trinidad and Tobago Land Surveyor *15th October* 2012