

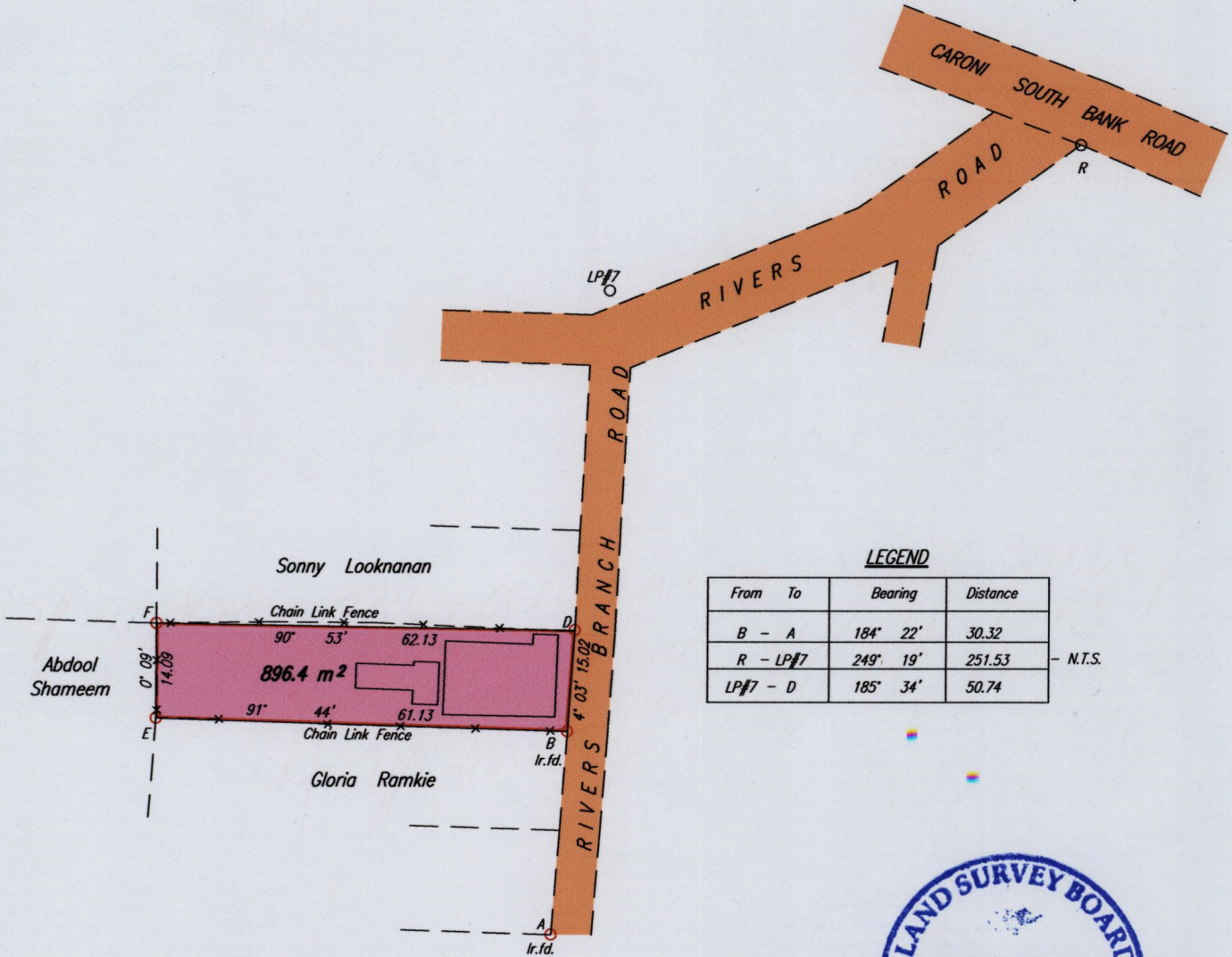
1434

1434/121

121

PROCESS ID # GG3Z3

To be brought under the provisions of the Real Property Ordinance



LEGEND

From	To	Bearing	Distance
B	- A	184° 22'	30.32
R	- LP#7	249° 19'	251.53
LP#7	- D	185° 34'	50.74

N.T.S.

Coordinates of B (lr.fd.): 0678863mE, 1170883mN
U.T.M. 20 WGS 84 (+/-5.00m)
G.P.S. Direct Observation



Approved
Director of Surveys
12/6/13

- Denotes Peg put except where otherwise stated
 - Denotes Iron put except where otherwise stated
- Bearings are Cassini Grid based on Solar Observations

SCALE 1:1000

Distances are in METRES

PLAN of a Parcel of land coloured pink in the Ward of Cunupia
Containing eight hundred and ninety six point four square metres
Surveyed by me, with due authority, on the 27th April 2011 for Withfield Barrock & Rose Barrock
In accordance with Regulation 25 (1) of The Land Surveyors Regulations 1998,
I certify that this plan is correct.

Checked by *mm* 15/5/2013

[Signature] TTLS

Entered on