

1434

1434/114

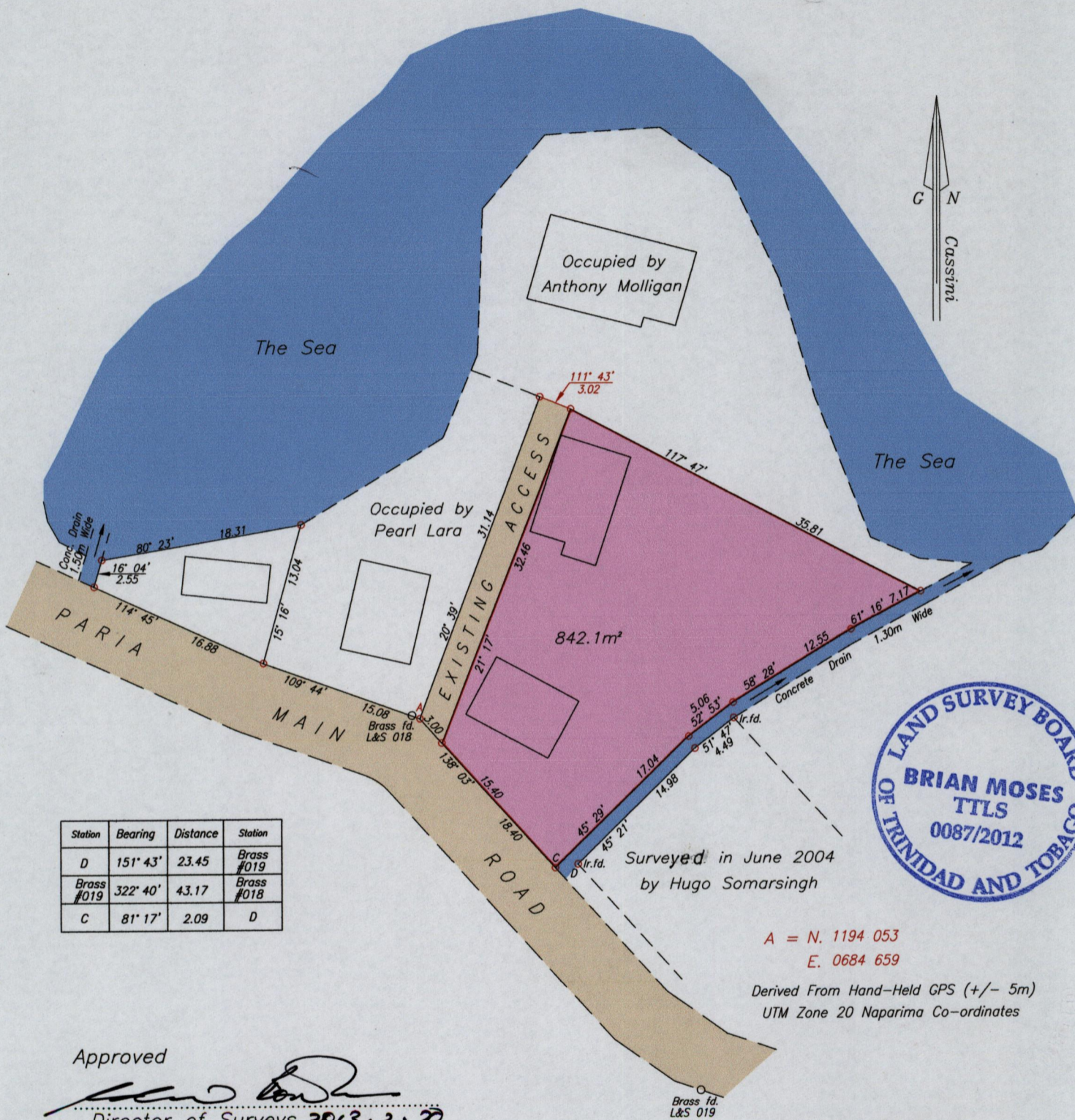
114

Cadastral Sheet B.9.B. 4E&B
2/d

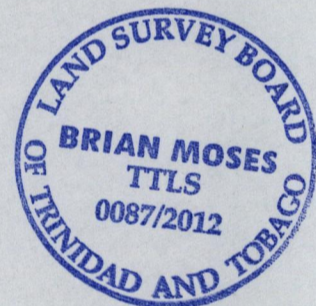
Ward of Blanchisseuse
County of St. George

Paria Main Road

To be brought under the provisions of the
Real Property Ordinance



Station	Bearing	Distance	Station
D	151° 43'	23.45	Brass #019
Brass #019	322° 40'	43.17	Brass #018
C	81° 17'	2.09	D



Surveyed in June 2004
by Hugo Somarsingh

A = N. 1194 053
E. 0684 659

Derived From Hand-Held GPS (+/- 5m)
UTM Zone 20 Naparima Co-ordinates

Approved

[Signature]
Director of Surveys 2013. 2. 20

SCALE 1/500

Distances are in metres

o Denotes Iron Put unless otherwise stated

Bearings are Cassini Grid based on Solar Observations

Plan of a Parcel of land coloured pink in the Ward of Blanchisseuse

Containing eight four two point one square metres

Surveyed by me, with due authority, on 19th September 2008 for Jenny Molligan

In accordance with Regulation 25 (1) of the Land Surveyors' Regulations 1998,

I certify that this plan is correct.

Checked by *[Signature]* 2012. 12. 06

Entered on

[Signature]
Trinidad & Tobago Land Surveyor..... 22nd May 2012