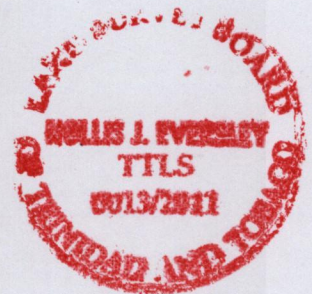
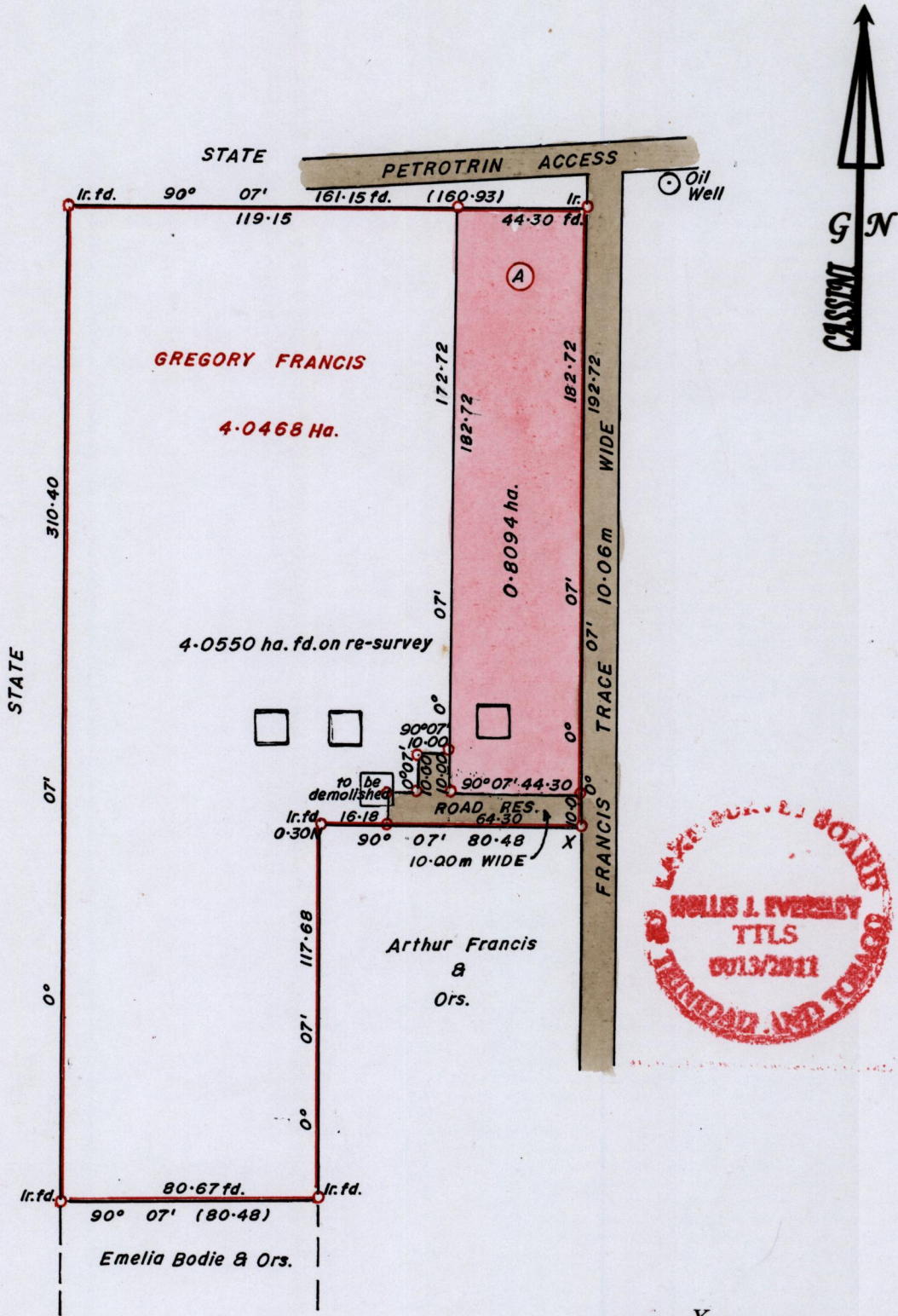


1433

89



X
 1118753 m N; 658094 m E.
 U.T.M. 20; WGS 84 (+/-5.0m)
 GPS Handheld Direct Obs.

Approved... *[Signature]*
 Director of Surveys. 2012.8.28

Bk. 483 : 98.
 SCALE 1 : 2000.

Distances are in METRES
 o Denotes Irons Put except otherwise stated
 Bearings are Cassini Grid based on Solar Observations.
 Note : To obtain compass Bearing add/subtract 07 minutes.

PLAN of a Parcel of land coloured PINK in the Ward of Siparia.
 Containing zero point eight zero nine four hectare.
 Surveyed by me, with due authority, in December 2009.
 In accordance with Reg. 25(1) of the Land Surveyors' Regulations 1998,
 I certify that this plan is correct.

Checked by *[Signature]* 2012.08.24

[Signature]
 Trinidad and Tobago Land Surveyor... 28 December 2011.

Entered

