

1433

83

R.P.O. Vol. 436 Fol. 257

C.T. Vol. 4540 Fol. 67

Process I.D. # 50873

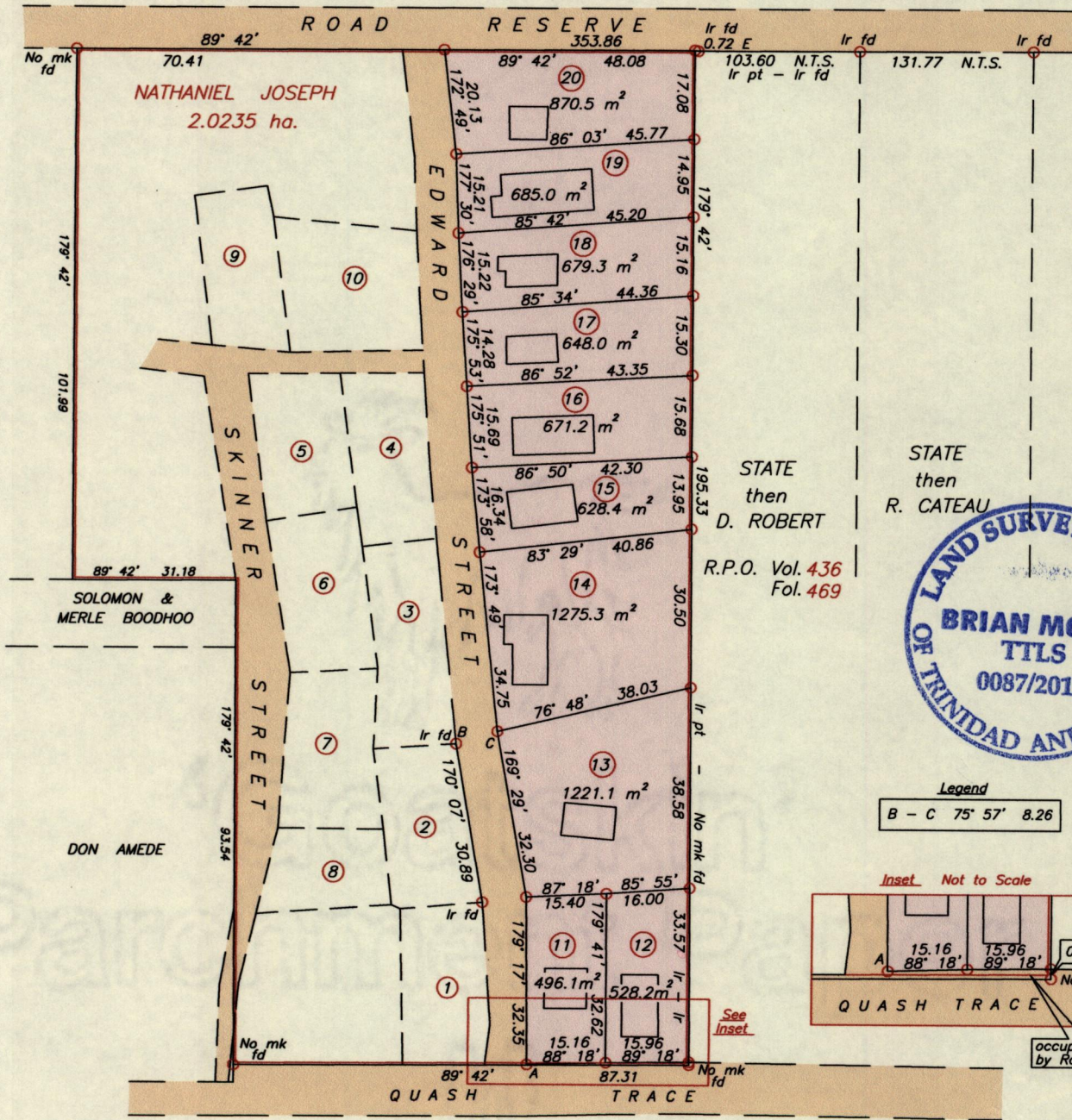
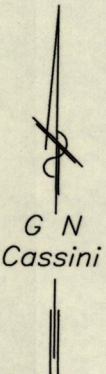
Cadastral Sheet C.22.J. ^{25F}/_{2/a}

Ward of Manzanilla

County of St. Andrew

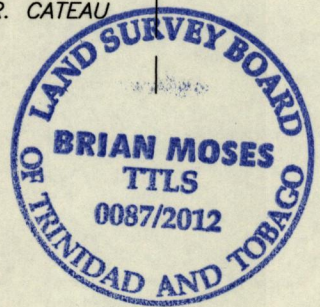
Ref:

Bk. 205	Fol. 147
Bk. 205	Fol. 236
Bk. 1065	Fol. 68
Bk. 502	Fol. 147
Plan 912	



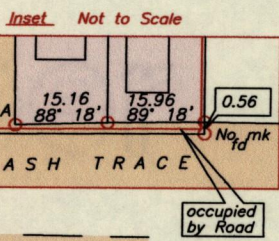
STATE then R. CATEAU

R.P.O. Vol. 436 Fol. 469



Legend

B - C 75° 57' 8.26



A - N 1171920
E 705989

Derived From Hand-Held GPS (+/-5 m)
UTM Zone 20 Naparima Co-ordinates

Approved *[Signature]*
Director of Surveys 2012.8.10

SCALE 1:1250
Distances are in METRES

- Denotes Iron put unless otherwise stated.
- Bearings are Cassini Grid based on Solar observations

PLAN of 10 Parcels of land coloured pink in the Ward of Manzanilla
Containing together seven seven zero three point one square metres
Surveyed by me, with due authority, in August, 2010 & March, 2012 at the request of Fitzroy Jordan
In accordance with Regulation 25 (1) of the Land Surveyors' Regulations 1998,
I certify that this Plan is correct.

Checked by *[Signature]* 2/8/2012
Entered on

[Signature]
Trinidad & Tobago Land Surveyor (T.T.L.S.)
28th June 2012

