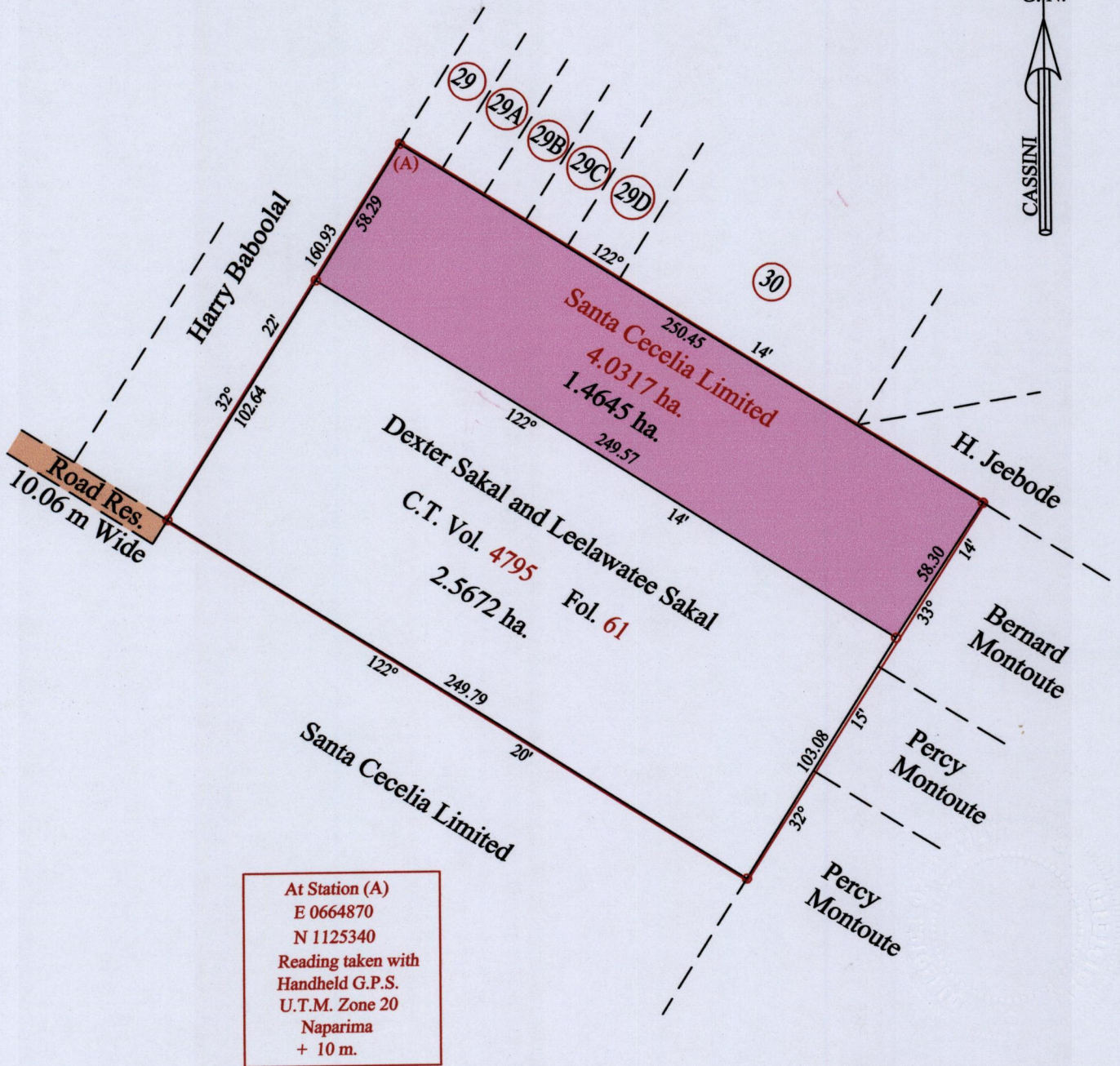


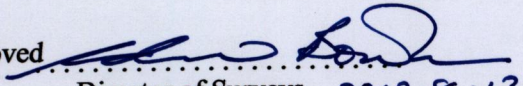
REMAINING PORTION PLAN

R.P.O. Vol. 08 Fol. 167
C.T. Vol. 1365 Fol. 153
PROCESS ID# 52802

Ward of Siparia
County of St. Patrick
Cadastral Sheet (G.12.G&H) 63.E.
1/d



At Station (A)
E 0664870
N 1125340
Reading taken with
Handheld G.P.S.
U.T.M. Zone 20
Naparima
+ 10 m.

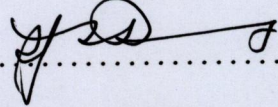
Approved 
Director of Surveys 2012.8.13

Vide Bk. 456 fol. 110
Vide Bk. 1053 fol. 83

SCALE : 1:2250

Note: Bearings are cassini grid based on solar observations Distances are in metres
This is a true copy of a diagram of four point zero three one seven hectares, originally transferred to Santa Cecelia Limited, showing a portion coloured pink and containing one point four six four five hectares being the remainder after one (1) previous transfer of another portion of the land. In accordance with Regulation 25 (1) of the Land Surveyors' Regulations 1998, I certify that this plan is correct.



Checked by  3/8/2012

Entered on Trinidad & Tobago Land Surveyor 28.06.2012

