

R.P.O. Vol. 7 Fol. 547
 C.T. Vol. 3206 Fol. 403

PROCESS I.D. # 43005
 C-T Vol 5490 Fol 457

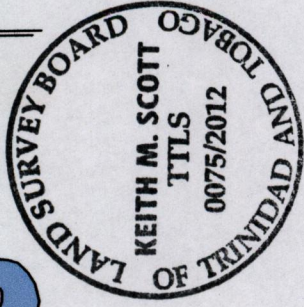
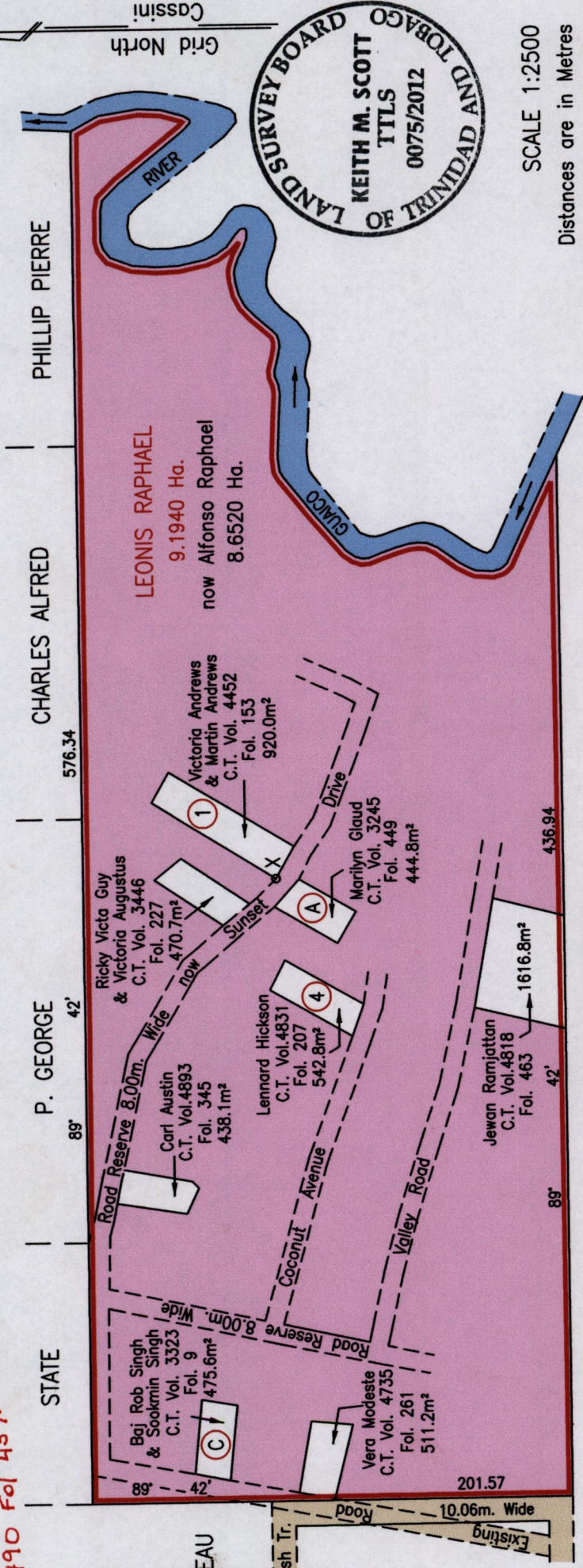
Vide	
Bk 174:35	
Bk 1197:123	
Bk 1280:198	
Bk 1358:64	
Plan J.A.33	
Plan G.A.13	

X	E	705971
	N	1171476

Reliability Error \pm 5.0 m.
 Coordinates are UTM,
 Naparima 1955 from
 Garmin GPSmap 60CSx
 Handheld GPS Receiver

Cadastral Sheet $\frac{25F}{2/a \text{ \& } 2/b}$, C.22.J.
 Ward of Manzanilla
 County of St. Andrew

REMAINING PORTION
 "Quash Trace, Sangre Grande"



SCALE 1:2500
 Distances are in Metres

MOSES HARRISON

Approved
[Signature]
 2012-8-9 Director of Surveys

NOTE TO USER:
 The position of the Guaico River depicted hereon has been obtained by scaling off plan attached to Crown Grant in Vol. 7 Fol. 547. The position of the river may have changed between then and the date hereof. No warranty is made that the position of the Guaico River as depicted hereon conforms with the position of same on the date hereof. The use of this plan should be restricted to purposes of transfer and registration only.

Bearings are Cassini Grid based on Solar Obs.

This is a true copy of a diagram of nine point one nine four zero hectares originally transferred to Leonis Raphael showing a portion coloured pink and containing eight point six five two zero hectares being the remainder after eight previous transfers of other portions of the land

Prepared by me, with due authority, in August 2011

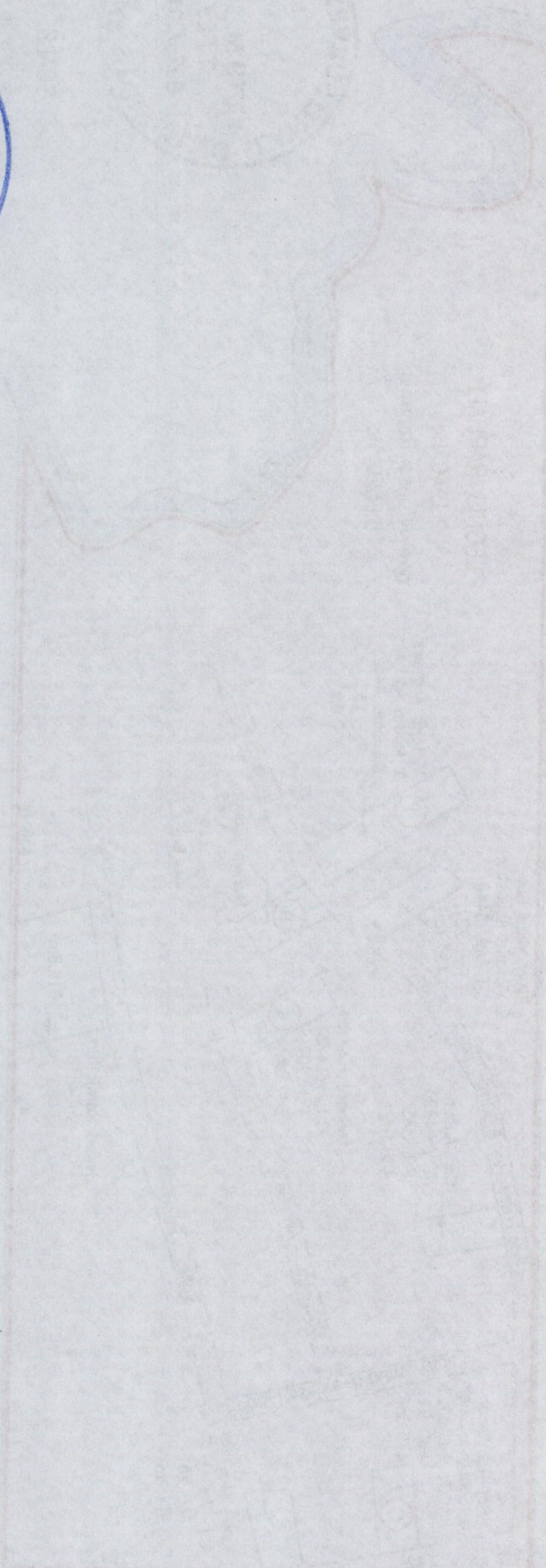
In accordance with Regulation 25(1) of the Land Surveyors' Regulations 1998, I certify that this plan is correct.

Checked by *[Signature]*
 Entered on *[Signature]*

[Signature]
 * July 2012
 Trinidad & Tobago Land Surveyor

1433

79



6273341