

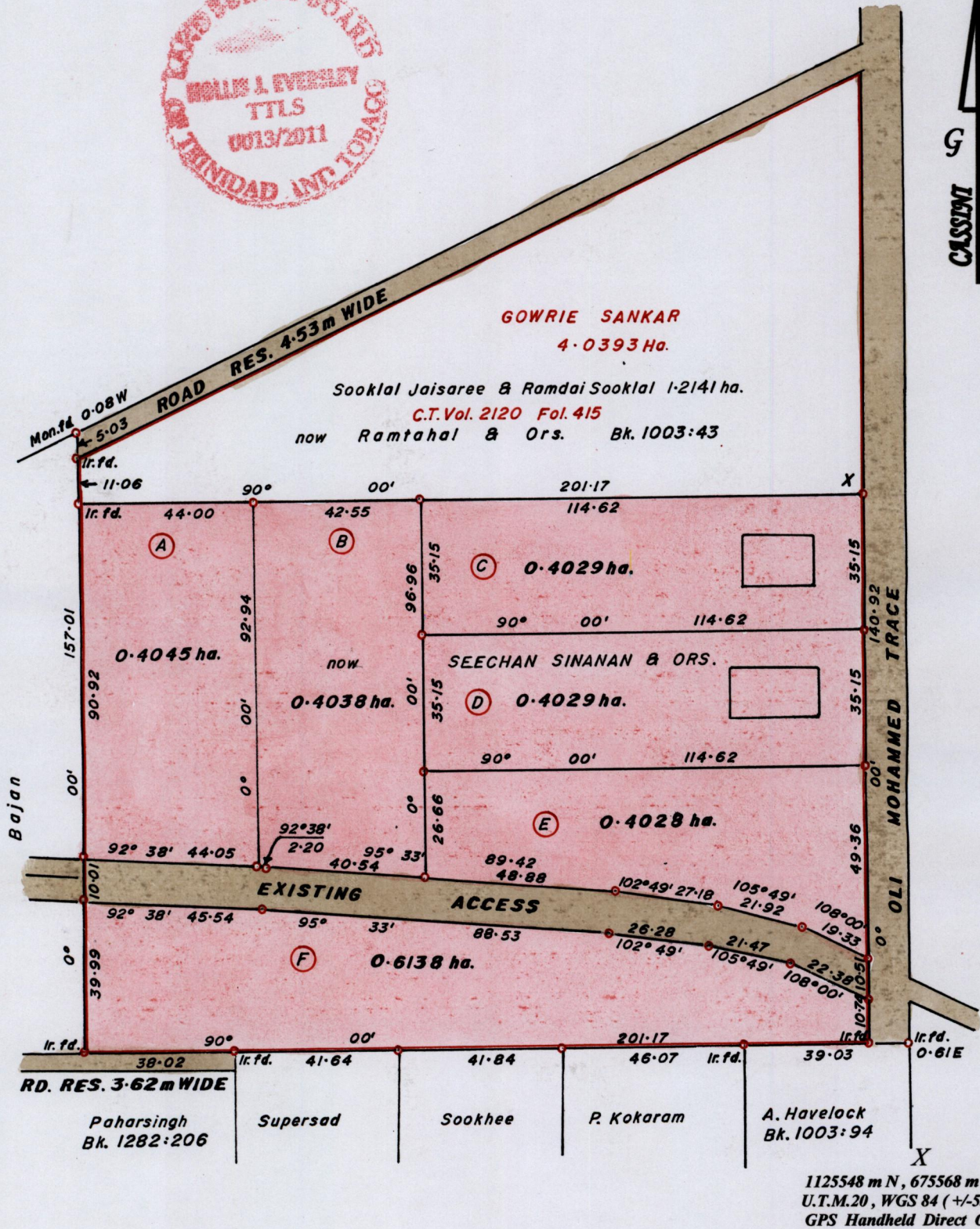
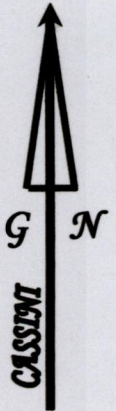
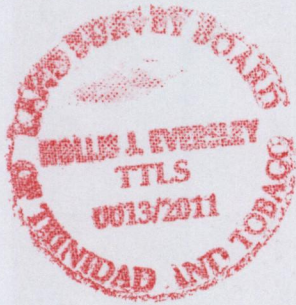
1433

73

R.P.O Vol. 432 Fol. 477
C.T. Vol. 1830 Fol. 207

Ward of Siparia.
County of St. Patrick.
Cadastral Sheet G.14.E. 64D
1/c

PROCESS ID # 47947



Approved: *[Signature]*
Director of Surveys. 2012.7.26

Bk. 1003 : 43.
SCALE 1 : 1500.

Distances are in METRES
o Denotes Iron Put except otherwise stated
Bearings are Cassini Grid based on Solar Observations.

Note : To obtain compass bearings add/subtract 00 minutes.
PLAN of 6 Parcels of land coloured PINK in the Ward of Siparia.
Containing together two point six three zero seven hectares.
Surveyed by me, with due authority, in February 2009.
In accordance with Reg. 25(1) of the Land Surveyors' Regulations 1998,
I certify that this plan is correct.

Checked by *[Signature]* 6/6/12
Entered *[Signature]* 28-02-2013

[Signature]
Trinidad and Tobago Land Surveyor. 27th December 2011.



1433/73