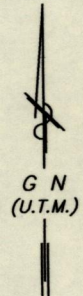
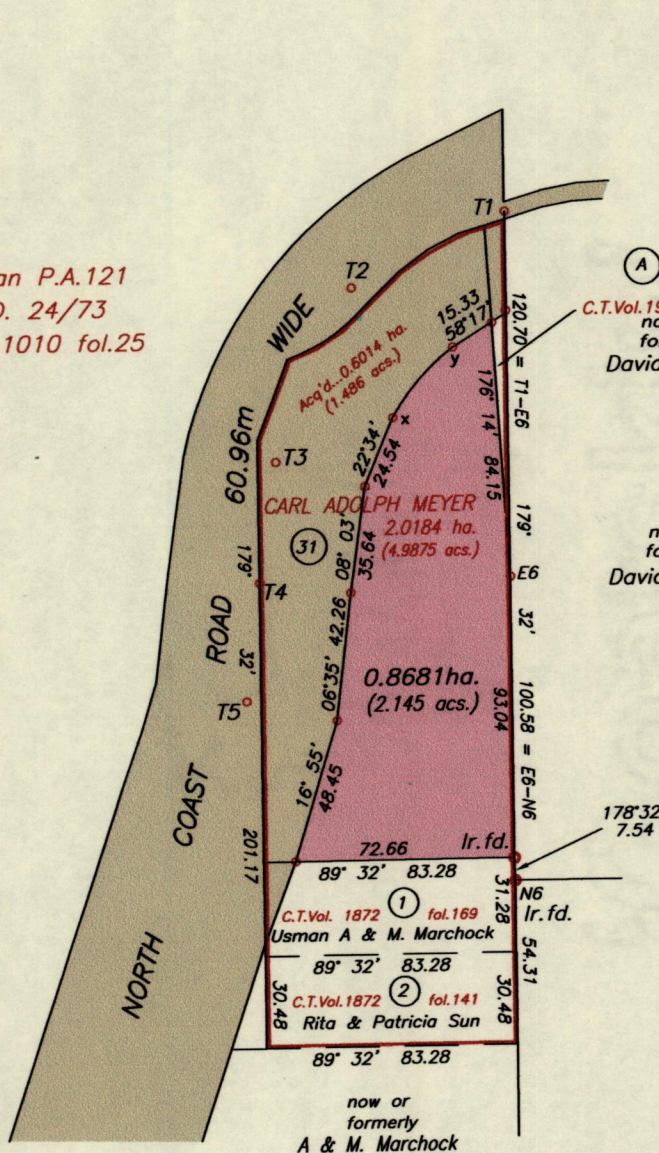


R.P.O. Vol...357.. Fol...543..
C.T. Vol....1734.. Fol...479..
PROCESS ID.# 54420

LA FILLETTE VILLAGE

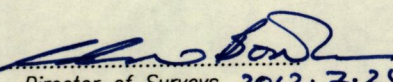
VIDE : Plan P.A.121
S.O. 24/73
Bk.1010 fol.25



C/LINE OF NORTH COAST ROAD
taken from S.O. 24/73

T1 - T2	244° 07'	56.77
T2 - T3	204° 02'	62.86
T3 - T4	188° 03'	40.31
T4 - T5	186° 35'	39.53
T5 - T6	198° 17'	402.22

PARCEL	CT.VOL.	FOL.	AREA (acres)
ORIGINAL PARCEL			
4	1734	479	4.987
TRANSFER			
1	1872	165	0.644
2	1872	137	0.625
A	1963	357	0.087
ACQUIRED			
31	Plan P.A.	121	1.486

Approved 
Director of Surveys. 2012. 7.24

N6 - N:1194,582
E: 678,839
Coordinates obtained by hand held GPS
(UTM Zone 20, Naparima + 5.0m)

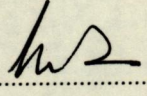
x - y 41° 21' 30.56 Rad. 74.50

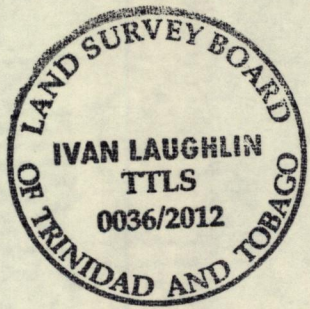
○ Denotes Iron put, unless otherwise stated
Bearings are based on Solar observations

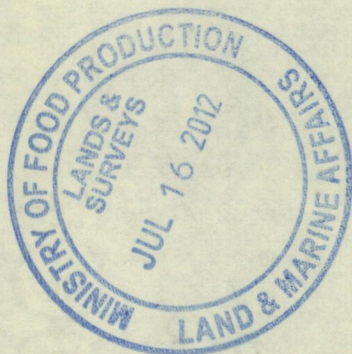
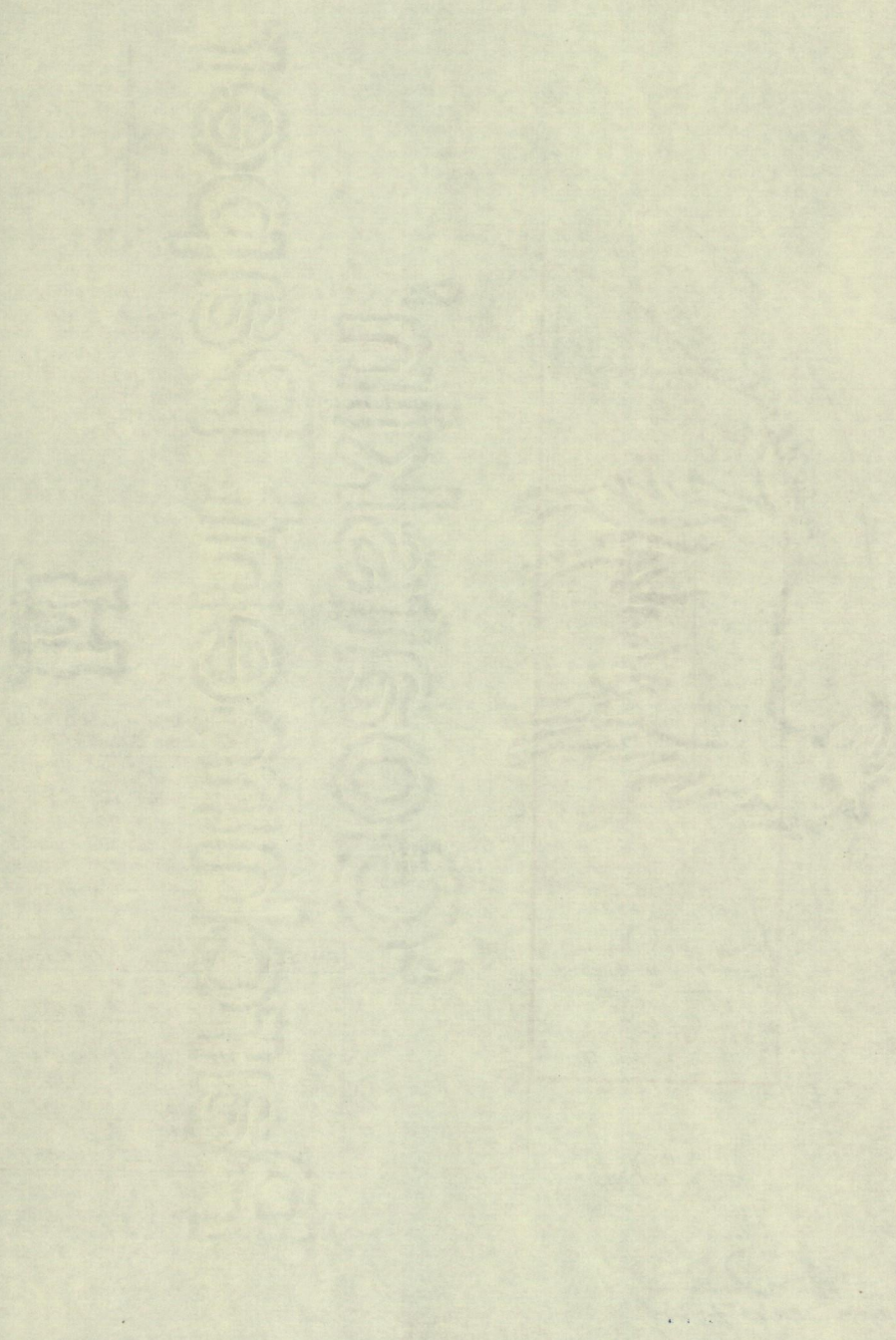
SCALE 1 : 2500
Distances are in Metres

PLAN of a Parcel of land coloured pink in the Ward of Blanchisseuse
Containing zero point eight six eight one hectares (2.14 acs.)
Surveyed by me, with due authority between May & August 2011.
In accordance with Regulation 25 (1) of the Land Surveyors' Regulations 1998,
I certify that this Plan is correct.

Checked by HR-16/07/12
Entered.....

 T.T.L.S.
Trinidad & Tobago Land Surveyor 18 June 2012.





1433/70