

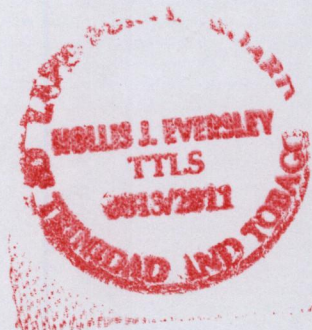
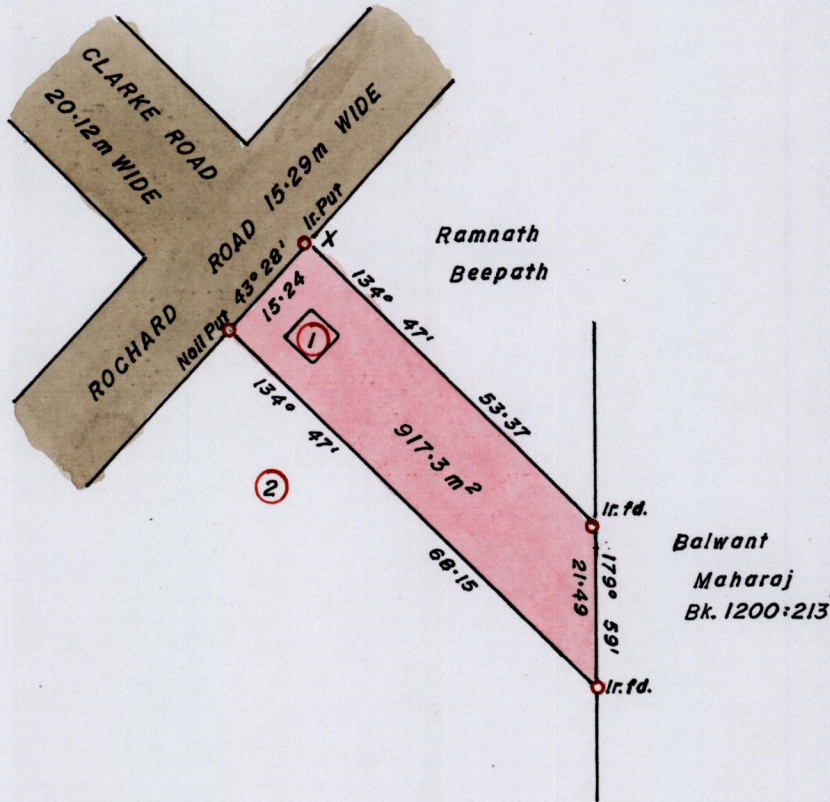
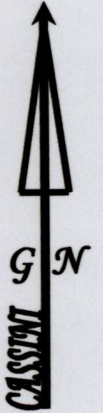
1433

64

R.P.O Vol. 559 Fol. 559  
C.T. Vol. 1191 Fol. 453

Ward of Siparia.  
County of St. Patrick.  
Cadastral Sheet G.14.I. 64D  
3/c

PROCESS ID. # 51569



X  
1123413 m N; 675428 m E.  
U.T.M. 20; WGS 84 (+/-5.0m)  
GPS Handheld Direct Obs.

Bk. 1010 : 45.

SCALE 1 : 1000.

Distances are in METRES

o Denotes Iron Put except otherwise stated  
Bearings are Cassini Grid based on Solar Observations.

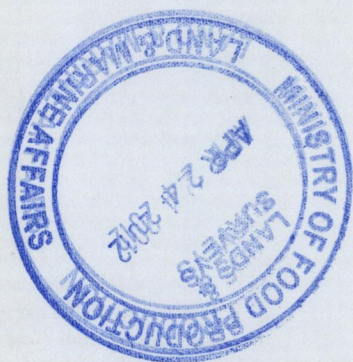
Note : To obtain compass Bearing add/subtract 01 minutes.

**PLAN of a Parcel of land coloured PINK in the Ward of Siparia.  
Containing nine hundred and seventeen point three square metres.  
Re-surveyed by me, with due authority, in October 2011, for Clarence Ramlal.  
In accordance with Reg. 25(1) of the Land Surveyors' Regulations 1998,  
I certify that this plan is correct.**

Checked by *A.M. ZAR* 07.12

Entered .....

*[Signature]*  
Trinidad and Tobago Land Surveyor... *25<sup>th</sup> December* 2011.



433/64  
49/341