

1433

REMAINING PORTION PLAN

Cadastral Sheet I.17.G. 2G
1/d

Ward of Tobago

Parish of St. David

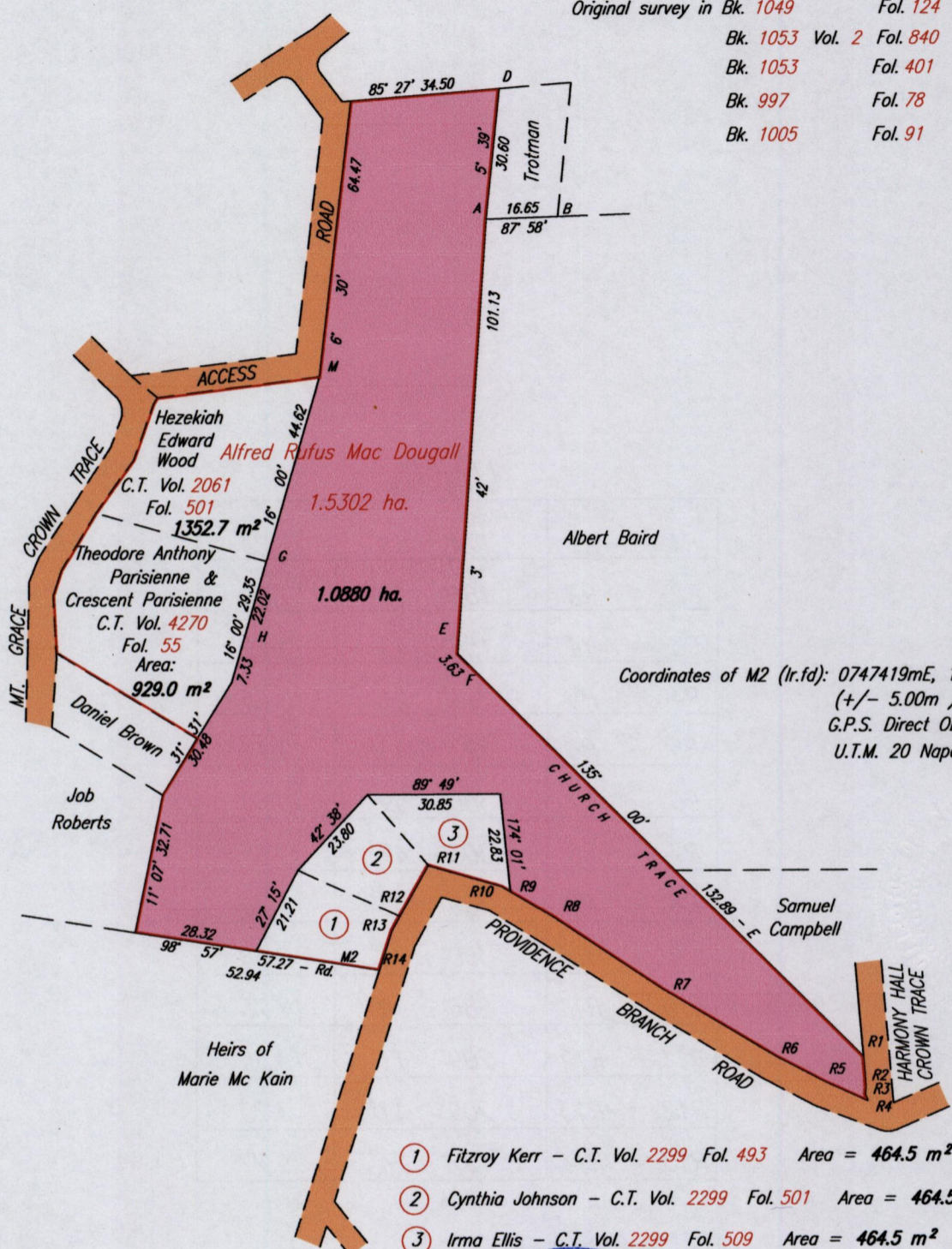
61

C.T. Vol. 2055

Fol. 11

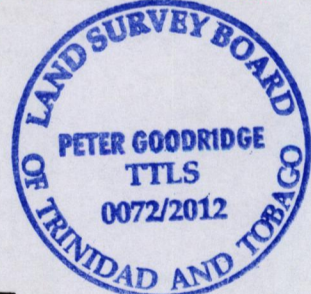
PROCESS ID # 44593

Original survey in Bk. 1049	Fol. 124
Bk. 1053 Vol. 2	Fol. 840
Bk. 1053	Fol. 401
Bk. 997	Fol. 78
Bk. 1005	Fol. 91



Coordinates of M2 (Ir.fid): 0747419mE, 1239234mN
 (+/- 5.00m)
 G.P.S. Direct Observation
 U.T.M. 20 Naparima

- ① Fitzroy Kerr - C.T. Vol. 2299 Fol. 493 Area = 464.5 m²
- ② Cynthia Johnson - C.T. Vol. 2299 Fol. 501 Area = 464.5 m²
- ③ Irma Ellis - C.T. Vol. 2299 Fol. 509 Area = 464.5 m²



SCALE 1:1500

Distances are in METRES

Approved *[Signature]*
 Director of Surveys 2012.7.4

This is a true copy of a diagram of one point five three zero two hectares originally transferred to Alfred Rufus Mac Dougall showing a portion coloured pink and containing one point zero eight eight zero hectares being the remainder after five previous transfers of other portions of the land In accordance with Regulation 25 (1) of The Land Surveyors' Regulations 1998,

I certify that this plan is correct.

Checked by *[Signature]* 20/6/12

[Signature] TTLS

Entered on *[Signature]* C.M.S. 27-02-2013 ... Trinidad & Tobago Land Surveyor
 C:\LESS 2011\TOBAGO\SAMPSON, IDA & NICLOE\0.dwg FILE NO: TSO60 2012

P.T.O. FOR LEGEND

LEGEND

R1 - R2	174° 53'	7.23
R2 - R3	186° 10'	1.59
R3 - R4	158° 15'	1.69
R4 - R5	294° 21'	10.45
R5 - R6	297° 43'	13.41
R6 - R7	300° 59'	30.53
R7 - R8	303° 47'	30.65
R8 - R9	300° 35'	11.36
R9 - R10	300° 35'	2.38
R10 - R11	286° 10'	17.76
R11 - R12	209° 11'	13.55
R12 - R13	209° 11'	3.75
R13 - R14	197° 24'	9.77



1432/61