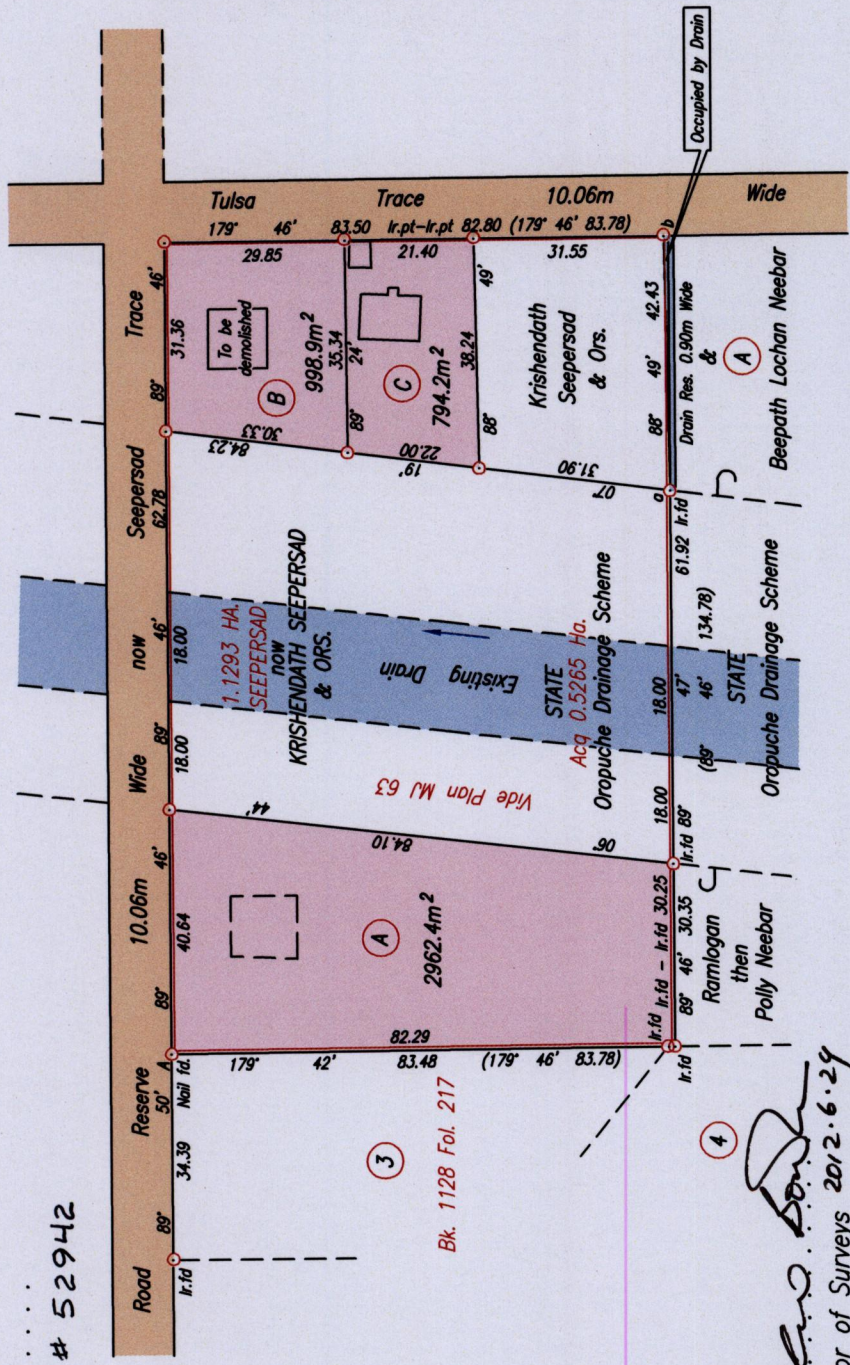
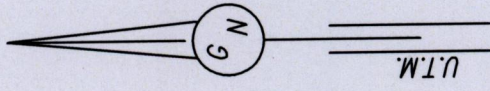


Cadastral Sheet G.13.E. 2/c
Ward of Siparia
County of St. Patrick
Bk. 868 Fol. 27

R.P.O. Vol. 149
C.T. Vol. 3476
U.R.P.N.
PROCESS ID # 52942

Fol. 183
Fol. 317



Legend	Bearing	Dist.
Sta. a - b	89° 46'	42.42

SCALE 1/1250
Distances are in metres

Point A
Co-ordinates obtained by Hand Held G.P.S. (Nap. Datum)
Accuracy ± 5m
E 666809m
N 1125976m



Approved
[Signature]
Director of Surveys 2012.6.29

Note: To obtain Cassini bearing + 18 minutes
Denotes Iron put except otherwise stated
Bearings are U.T.M. Grid based on Solar Observations
Plan of 3 Parcels of land coloured pink in the Ward of Siparia
Containing together four thousand seven hundred and fifty five square metres
Surveyed by me, with due authority, on January 18th 2011
In accordance with Regulation 25 (1) of the Land Surveyors' Regulations 1998,
I certify that this plan is correct.

Entered on
Checked by: *[Signature]* 25/6/2012
Ganeshdath Ramcharitar
Trinidad & Tobago Land Surveyor
1875-2012



1433/56