

R.P.O Vol. 67 Fol. 421

CT. Vol. 1333 Fol. 155
CT. Vol. 5505 Fol. 235

PROCESS ID# 46549

1433

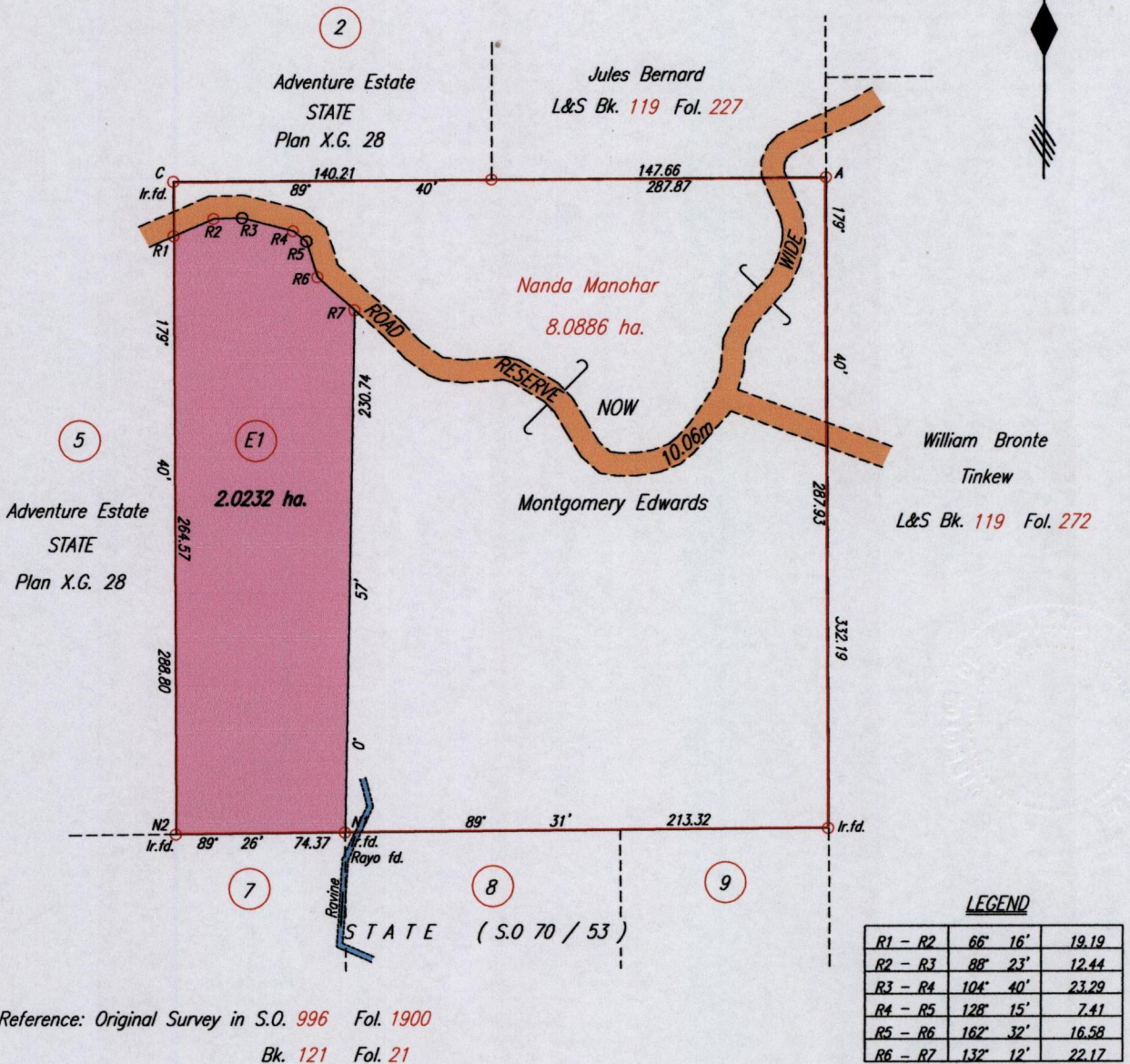
Cadastral Sheet C.4.N 6C
3/c

54

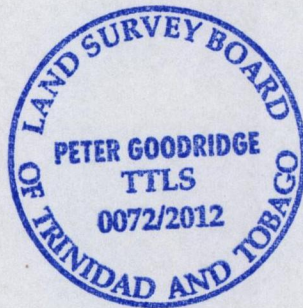
Ward of Toco

County of St. David

SELF HELP ROAD - TOCO



Coordinates of C (lr. fd.): 719959mE, 1195920mN
U.T.M. 20 Naparima (+/- 9.00m)
G.P.S. Direct Observation using a Handheld GPS



Approved Director of Surveys 2012.6.26

- Denotes Peg put
 - Denotes Iron put except where otherwise stated
- Bearings are Cassini Grid based on Solar Observations

SCALE 1:3000
Distances are in METRES

PLAN of a Parcel of land coloured pink in the Ward of Toco
Containing two point zero two three two hectares
Surveyed by me, with due authority, in November 2009 for Montgomery Edwards
In accordance with Regulation 25 (1) of The Land Surveyors' Regulations 1998,
I certify that this plan is correct.

Checked by 15/5/12

TTLS

Entered on

Lot #	C.T. Vol & Folio	Names
E1	5505. fol 237	Rhona & Oswald Cudjoe

