

Process ID.# 40333
 R.P.O. Vol. 45 Fol. 331

C.T. Vol. 519 Fol. 263

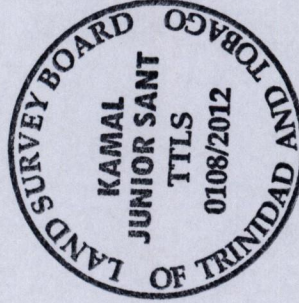
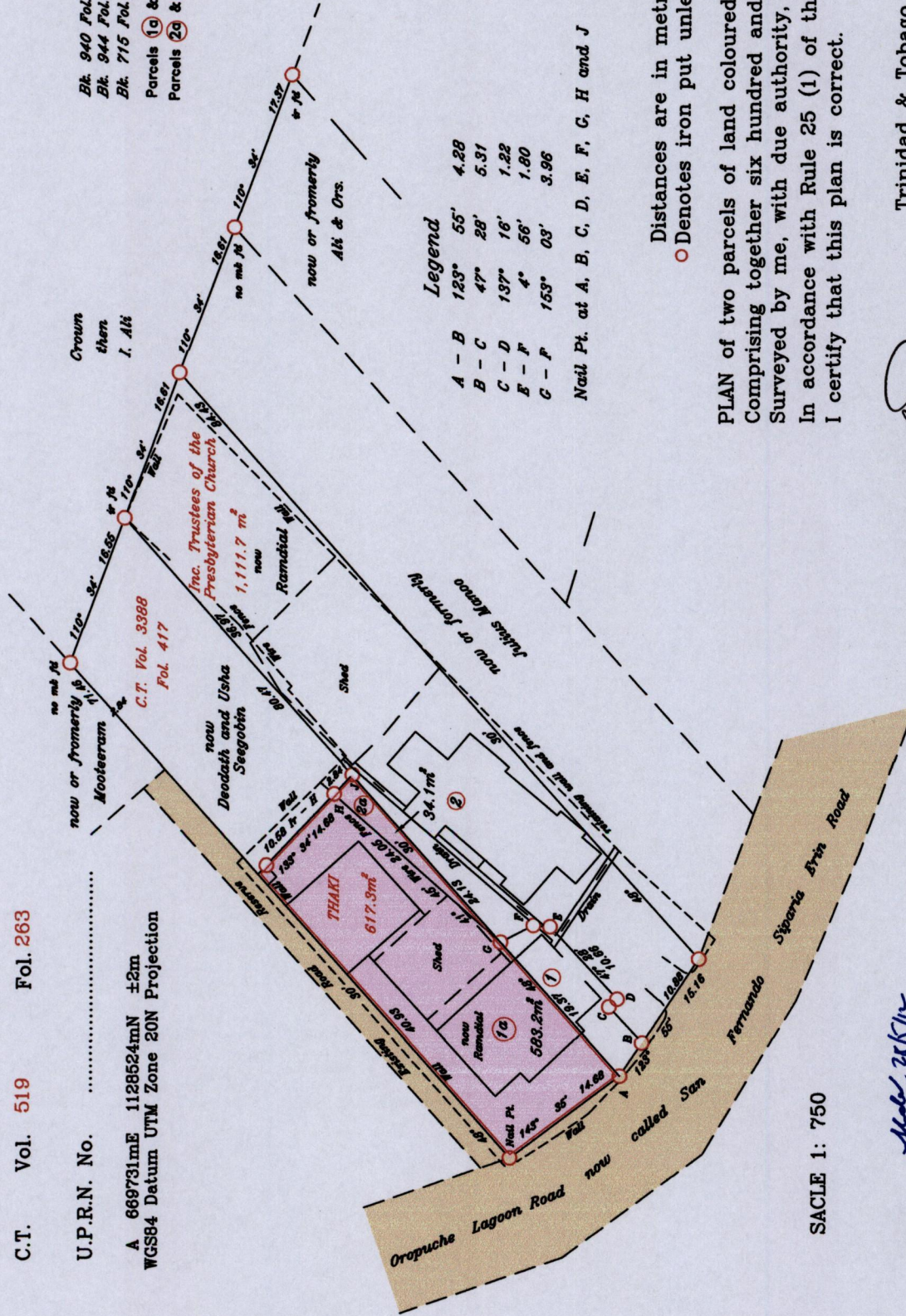
U.P.R.N. No.

A 669731mE 1128524mN ±2m
 WGS84 Datum UTM Zone 20N Projection

Ward of Naparima
 County of Victoria
 Cadastral Sheet 63C
 3/c (G.8.N)

References
 Blk. 940 Fol. 6 Blk. 722 Fol. 165
 Blk. 944 Fol. 59 Plan P.F. 177
 Blk. 715 Fol. 29

Parcels 10 & 11 to be amalgamated
 Parcels 20 & 21 to be amalgamated



Distances are in metres
 ○ Denotes iron put unless otherwise stated

PLAN of two parcels of land coloured pink in the ward of Naparima. Comprising together six hundred and seventeen point three sq. metres. Surveyed by me, with due authority, in June 2004.

In accordance with Rule 25 (1) of the Land Surveyors' Regulations 1998, I certify that this plan is correct.

Trinidad & Tobago Land Surveyor
 26th January 2012

Approved
 Director of Surveys
 20/2-6-12

Checked by
 Entered on

1433 1433

5(1)



1433/50