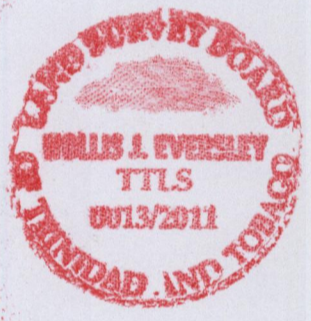
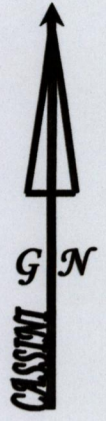
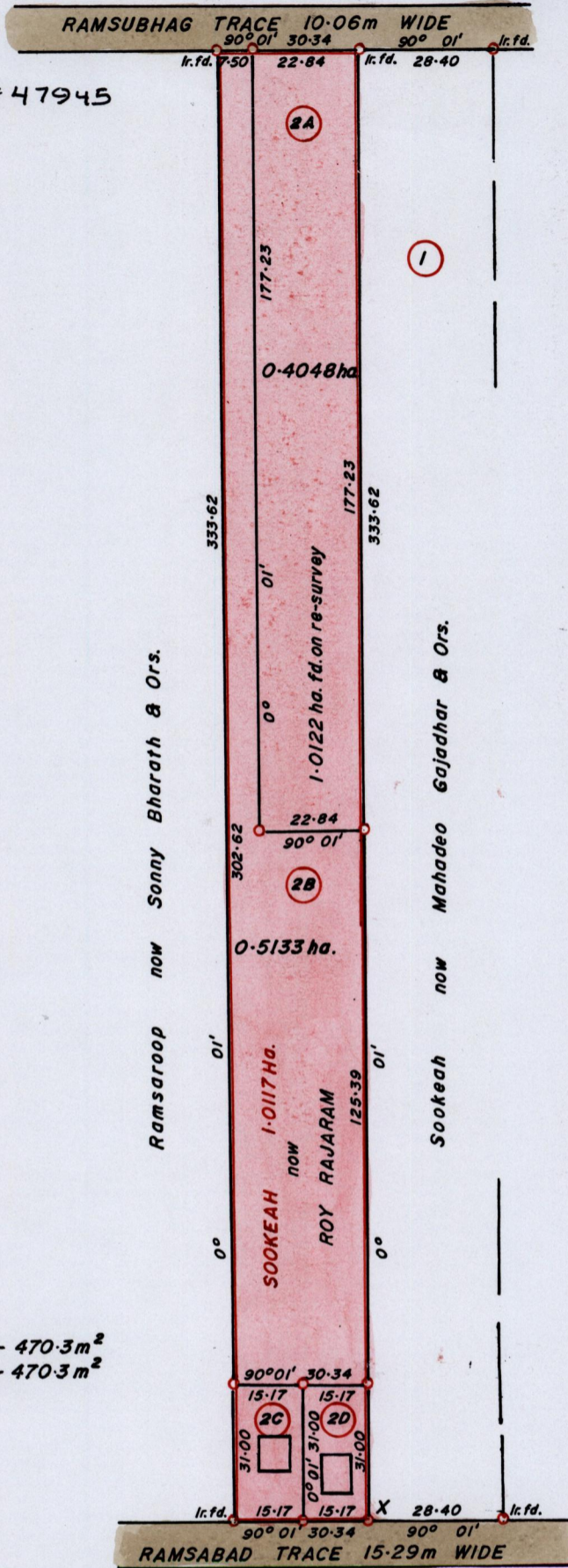


PROCESS ID. # 47945



Lot 2C- 470.3 m²
 Lot 2D- 470.3 m²

X
 1123932 m N ; 676410 m E.
 U.T.M. 20 ; WGS 84 (+/-5.0m)
 GPS Handheld Direct Obs.

Bk. 991 : 193.
 SCALE 1 : 1500.

Approved *[Signature]*
 Director of Surveys. 2012.6.12

Distances are in METRES
 o Denotes Iron Put except otherwise stated
 Bearings are Cassini Grid based on Solar Observations.

Note : To obtain compass Bearing add/subtract 01 minutes.

PLAN of 4 Parcels of land coloured PINK in the Ward of Siparia.
 Containing one point zero one two two hectares.
 Surveyed by me, with due authority, in March 2008.
 In accordance with Reg. 25(1) of the Land Surveyors' Regulations 1998,
 I certify that this plan is correct.

Checked by *[Signature]* 6/6/12

[Signature]

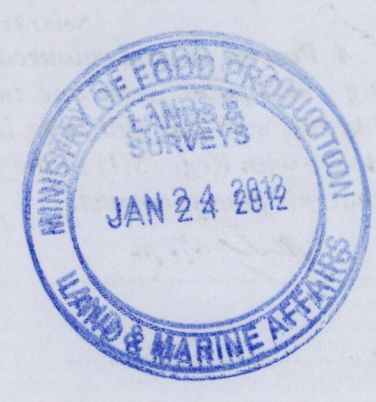
Entered CMIS 05-03-2013
[Signature]

Trinidad and Tobago Land Surveyor *[Signature]* 27 December 2011.

Handwritten text at the top of the page, including "C. 104" and "100".

Vertical handwritten text on the left margin, possibly "100".

SCALE 1:1500



1423/47