

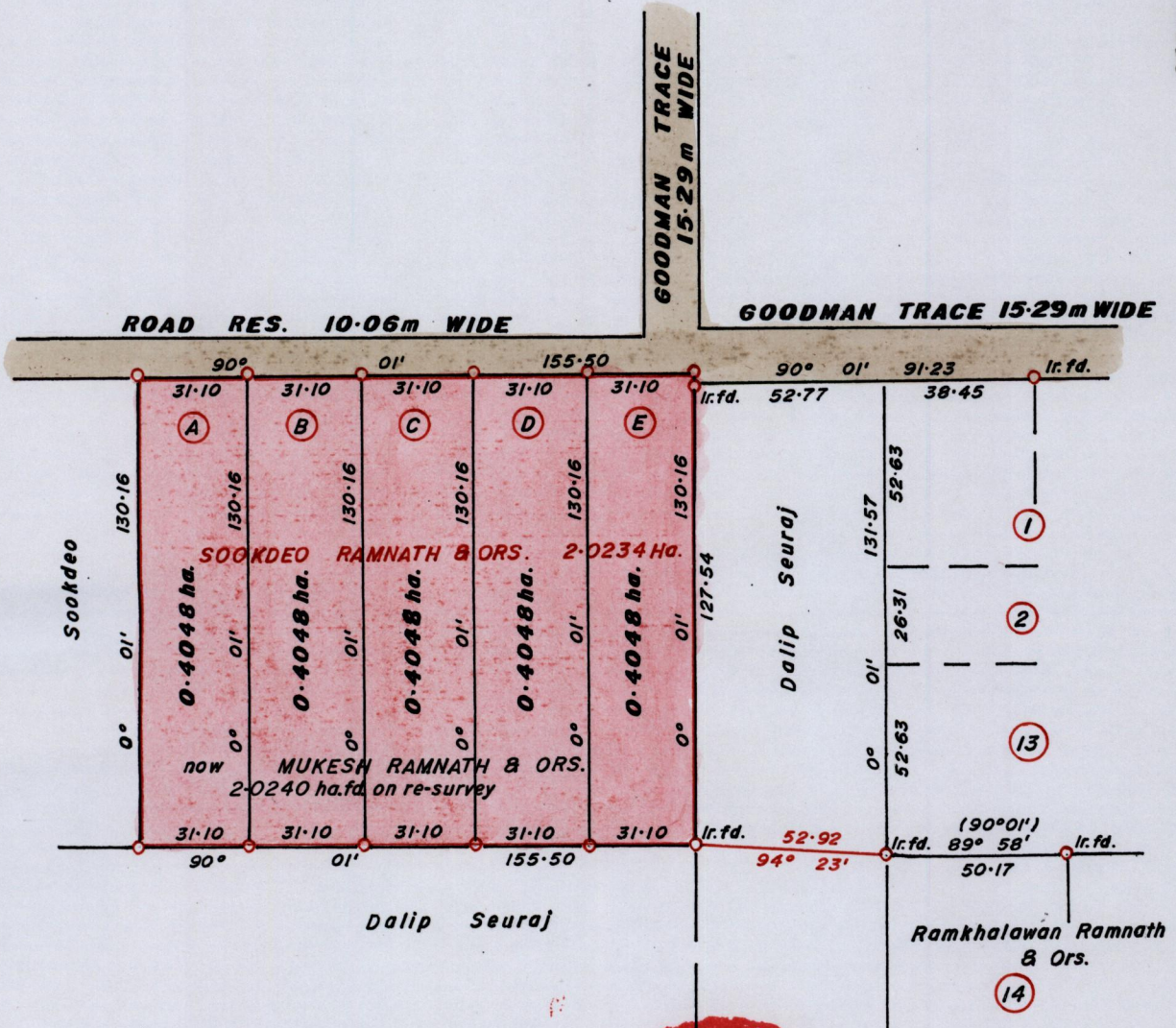
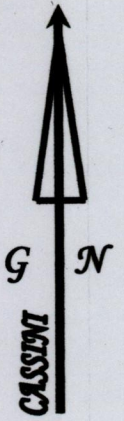
Process ID # 46258
 R.P.O Vol. 188 Fol. 153
 C.T. Vol. 3238 Fol. 263

1433

41

Ward of Siparia.
 County of St. Patrick.
 Cadastral Sheet G.18.C. 73C
 2/a

671894 mE, 1121052mN.
 X- U.T.M. 20, WGS 84 (+/- 5.0m)
 GPS Handheld Direct Obs.



Approved: *[Signature]*
 Director of Surveys. 2012.6.11

SCALE 1:2000.

Distances are in METRES

o Denotes Iron Put except otherwise stated
 Bearings are Cassini Grid based on Solar Observations.

PLAN of 5 Parcels of land coloured in PINK in the Ward of Siparia.
 Containing together two point zero two four zero hectares.
 Surveyed by me, with due authority, in May 2011.
 In accordance with Reg. 25(1) of the Land Surveyors' Regulations 1998,
 I certify that this plan is correct.

Checked by *[Signature]*

[Signature]

Entered Trinidad and Tobago Land Surveyor *[Signature]* 2011.

Faint header text at the top of the page, possibly including a title or reference number.



1433/A1