

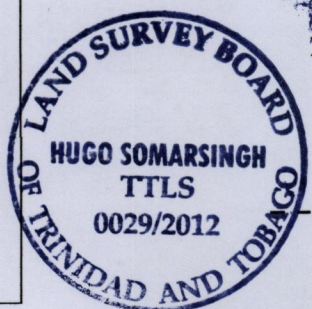
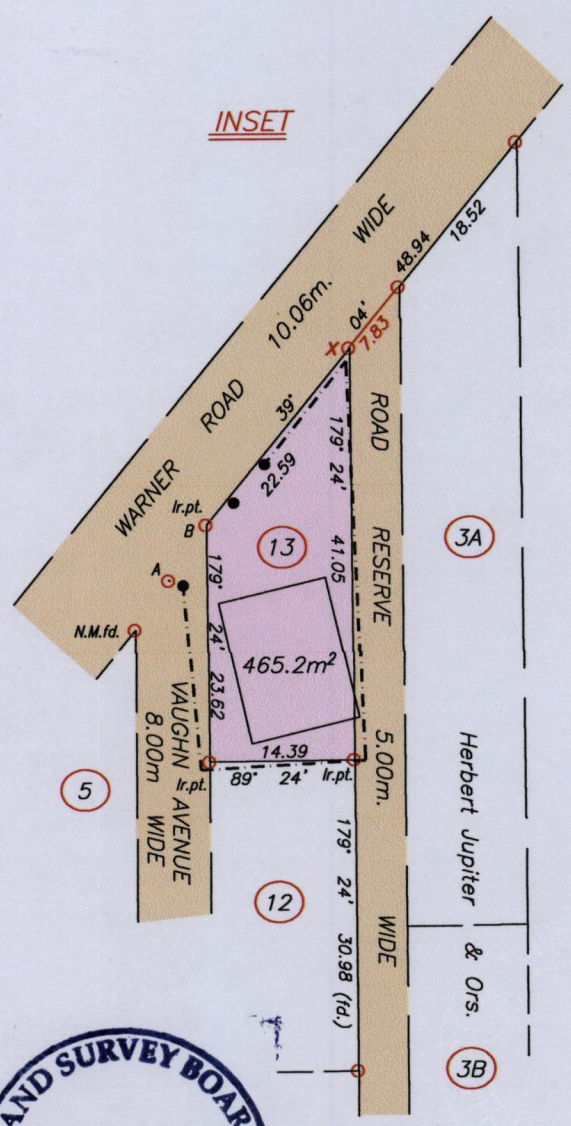
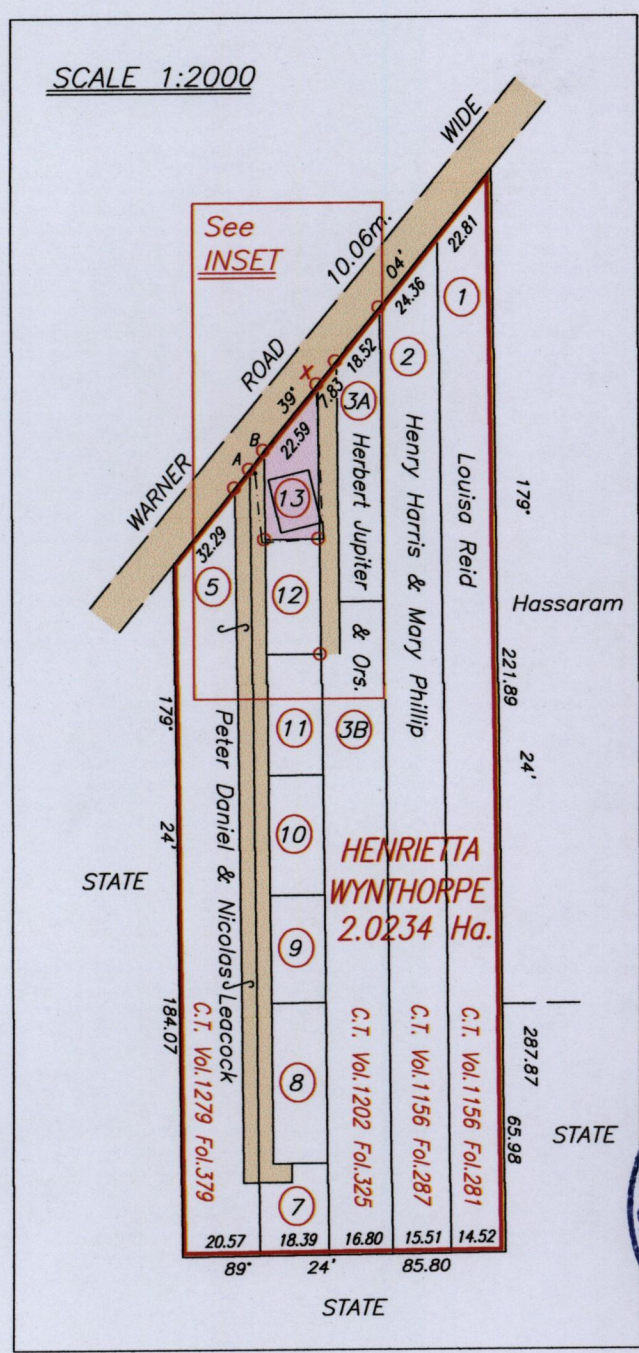
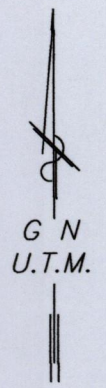
1433

40

PROCESS ID # 39550
R.P.O. Vol. 230 Fol. 159
C.T. Vol. 1092 Fol. 501

25F
Cadastral Sheet C.22.J. 2/a
Ward of Manzanilla
County of St. Andrew

Vide: PLAN J.G.75
PLAN J.A.118



• Denotes Column
- - - Denotes Fence

A - B 34' 21' 6.65

X = N 1172505 +/- 5.0m
E 705646
UTM 20 WGS 84
Hand Held GPS

Approved Director of Surveys 2012.6.11

○ Denotes Iron found unless otherwise stated
Bearings are U.T.M. Grid based on Solar observations

SCALE 1:750
Distances are in METRES

PLAN of a Parcel of land coloured pink in the Ward of Manzanilla
Containing four hundred and sixty five point two square metres
Surveyed by me, with due authority, in March 2011
In accordance with Regulation 25 (1) of the Land Surveyors' Regulations 1998,
I certify that this Plan is correct.

Checked by 6/6/12 T.T.L.S.
Entered on Trinidad & Tobago Land Surveyor 20.1.12

