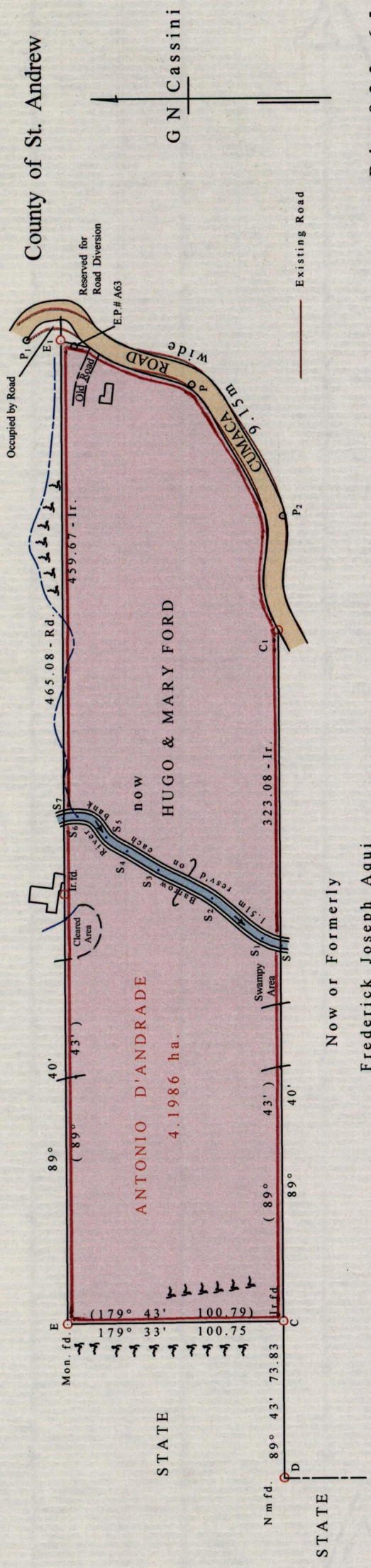


1433

39



Now or Formerly
 Frederick Joseph Aquí

B k . 8 2 3 : 6 5

Approved
[Signature]
 Director of Surveys 2012.6.11

○ Denotes Ir.pt. unless otherwise stated
 Bearings are Cassini Grid based on Solar Observations

PLAN of a Parcel of land coloured pink in the Ward of Valencia

Containing four point one nine eight six hectares

Surveyed by me, with due authority in March 2009

In accordance with Regulation 25 (1) of the Land Surveyors' Regulation 1998,

I certify that this plan is correct.

George Johnson (TTLS)

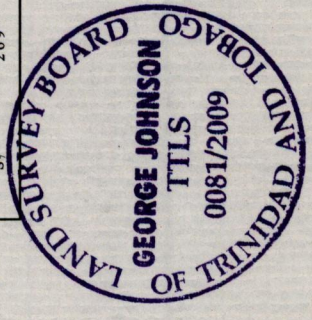
Checked by *[Signature]*

Entered by
 Trinidad and Tobago, Land Surveyor *David May* 2009

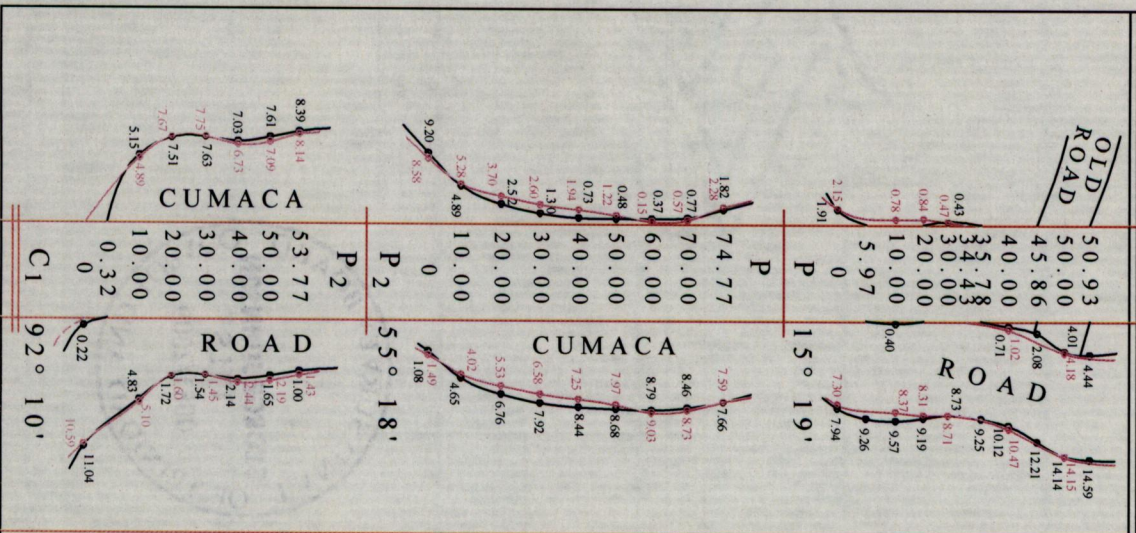
STA	BEARING	DIST	STA	BEARING	DIST	STA
C ₁	92° 10'	53.77	P ₂	89° 47'	176.16	S
P ₂	55° 18'	74.77	P	20° 53'	9.47	S ₁
P	15° 19'	79.89	P ₁	38° 35'	30.02	S ₂
P ₁	181° 51'	16.03	S ₂	27° 57'	28.44	S ₃
			S ₃	31° 22'	17.02	S ₄
			S ₄	33° 36'	11.75	S ₅
			S ₅	36° 04'	16.50	S ₆
			S ₆	354° 22'	6.42	S ₇
			S ₇	269° 40'	236.83	E

SCALE ~ 1 : 2500

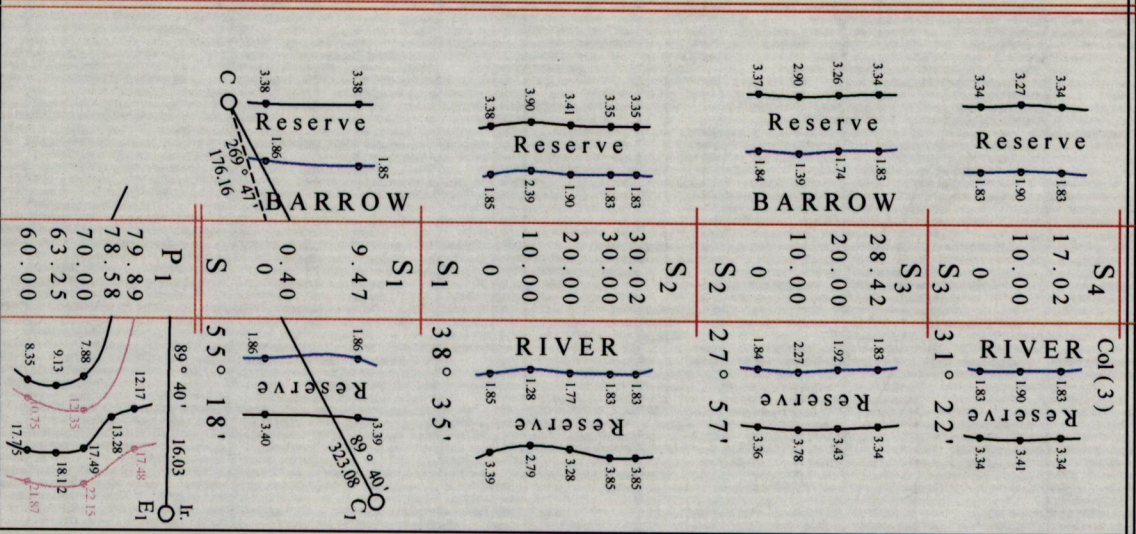
Distances are in metres



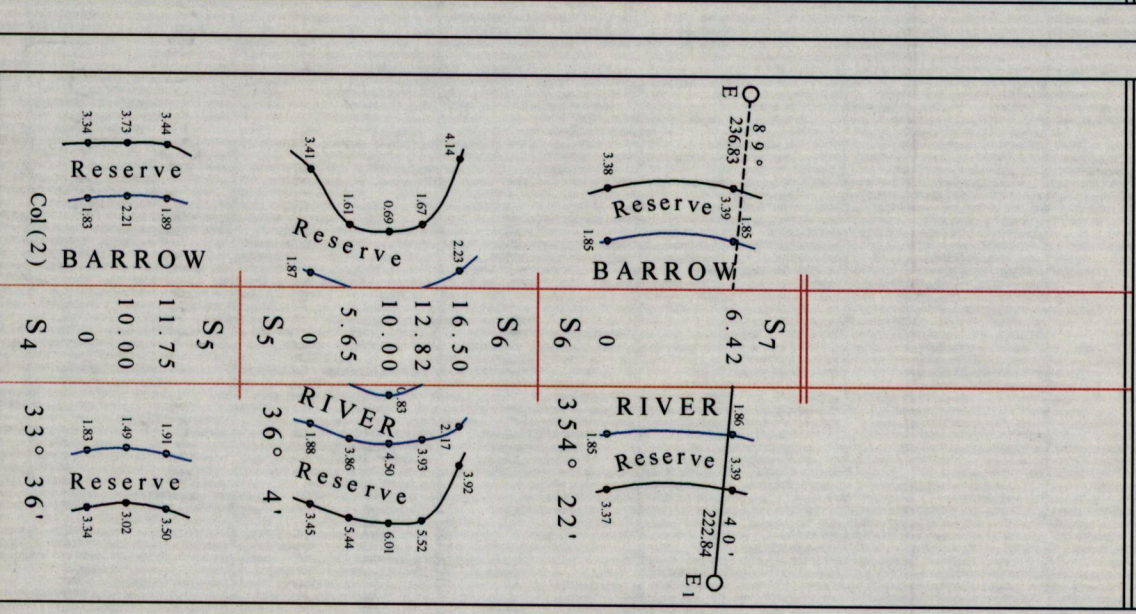
(1)



(2)



(3)



Previous Outline of Road



1433/39