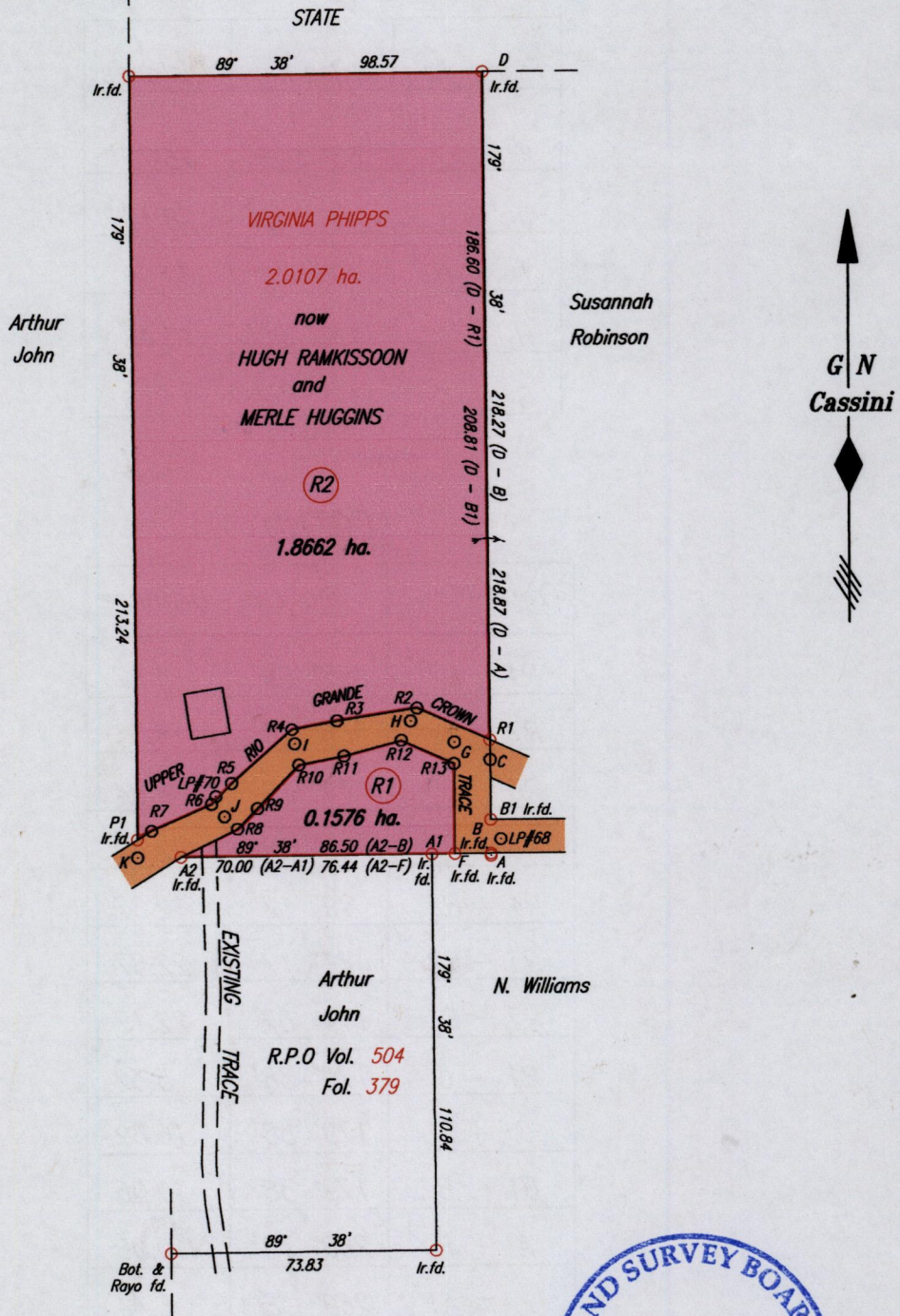
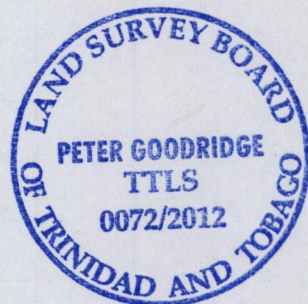


M A T U R A

Process ID # 31177



Coordinates of A (I.r.f.d.): 0710619mE, 1180887mN  
U.T.M. 20 WGS 84 (+/- 4.00m)  
G.P.S. Direct Observation



For Road Notes see S.O. 222/19 in Bk. 208 Fol. 200

Approved *[Signature]*  
Director of Surveys 2012.5.29

SCALE 1:2000

Distances are in METRES

- Denotes Iron put except where otherwise stated
  - Denotes Peg put except where otherwise stated
- Bearings are Cassini Grid based on Solar Observations

PLAN of 2 Parcels of land coloured pink in the Ward of Matura  
Containing together two point zero two three eight hectares  
Surveyed by me, with due authority, in January 2010 for Merle Huggins Ramkissoon  
In accordance with Regulation 25 (1) of The Land Surveyors' Regulations 1998,  
I certify that this plan is correct.

Checked by *[Signature]* 16.5.2012

*[Signature]* TTLS

Entered on *[Signature]* 10-09-2012

Trinidad & Tobago Land Surveyor *[Signature]* 27<sup>th</sup> February 2012  
C:\LESS 2010\TRINIDAD\RAMKISSOON\MERLE.dwg FILE NO: R061

P.T.O. FOR LEGEND

SURVEY ORDER ROAD NOTES

From To	Bearing	Distance
K - J	65° 08'	26.75
J - I	44° 12'	28.16
I - H	79° 12'	32.99
H - G	116° 28'	13.48
G - C	116° 28'	11.16

LEGEND

From - To	Bearing	Distance
P1 - R7	58° 09'	4.67
R7 - R6	66° 10'	18.33 ✓
R6 - R5	44° 12'	8.04 ✓
R5 - R4	48° 38'	22.49 ✓
R4 - R3	79° 12' ✓	12.87 ✓
R3 - R2	81° 17' ✓	22.57 ✓
R2 - R1	114° 07' ✓	22.17 ✓
R1 - C	179° 38' ✓	5.52
C - B1	179° 38' ✓	16.69 ✓
B1 - B	179° 38' ✓	10.06 ✓
A - F	269° 38'	10.06
F - A1	269° 38'	6.44
A2 - R8	63° 46'	17.66
R8 - R9	44° 12'	8.04
R9 - R10	43° 55'	16.66
R10 - R11	79° 12'	12.87
R11 - R12	74° 55'	16.51
R12 - R13	114° 07'	16.10
R13 - F	179° 38'	25.21
R6 - LP#70	36° 29'	1.95
B - LP#68	34° 13'	4.82

LOT# C.T. Vol's Folio Names.  
 R1 5616 fol 455 Rhonda-Lee Suenotta Lewis.  
 R2

