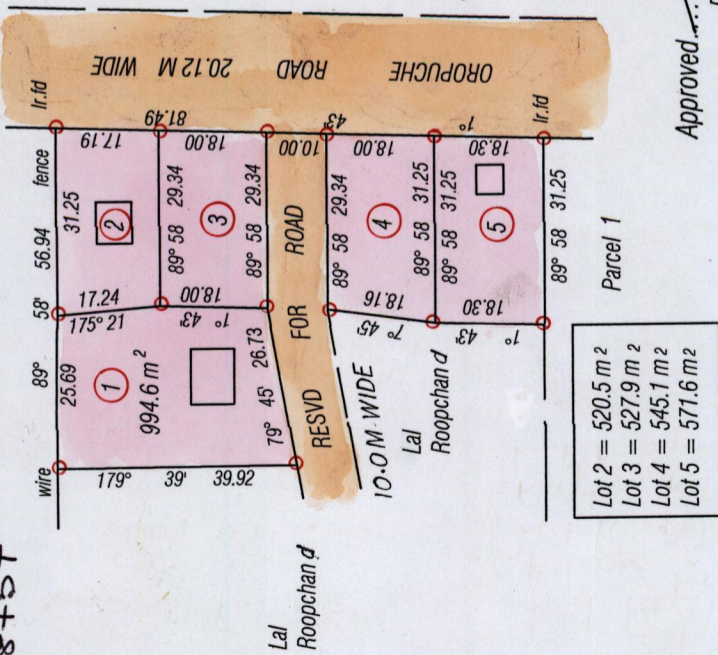


RPO . Vol 433 Fol. 111
 CT. Vol. 2568 Fol. 345
 CT. Vol. 5564 Fol. 245

Process ID# 48757

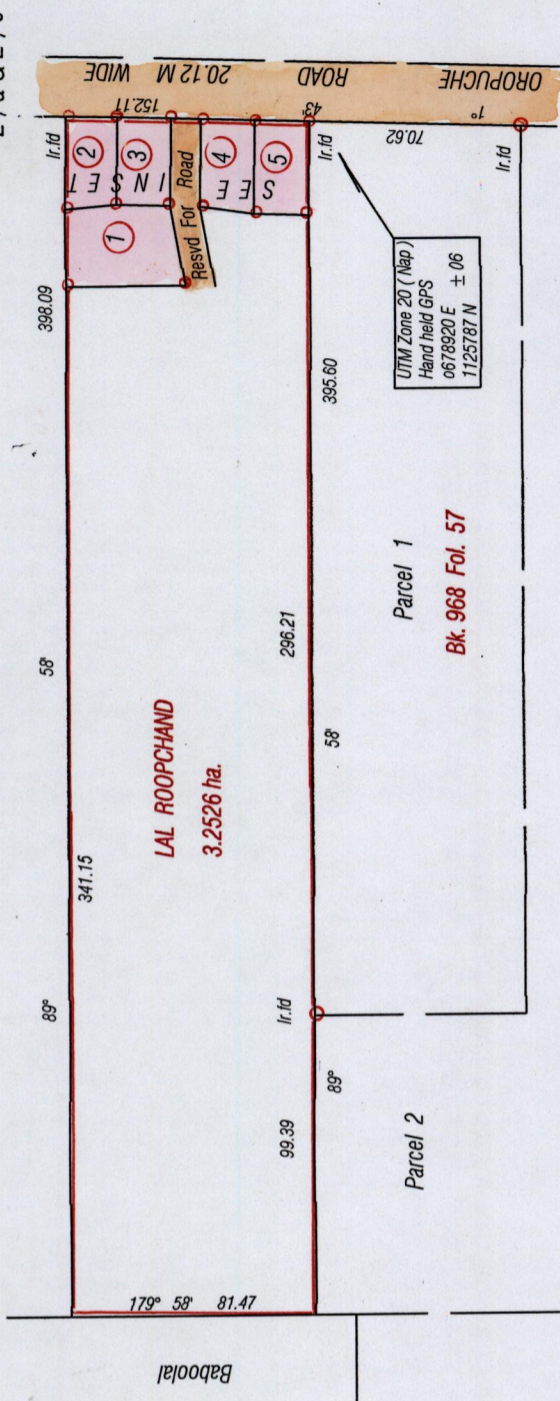
INSET

Ralph Ramesar & Ors.



Bk 433 Fol. 113

Now or formerly
 Ralph Ramesar & Ors.



SCALE = 1/12500

Approved: *[Signature]*
 Director of Surveys 2012.5.29

Bearings are Cassini Grid based on Solar Obs.

○ Denotes iron put except otherwise stated

Note: To obtain compass bearings add/subtract minutes

PLAN of 5 Parcels of land coloured Pink in the Ward of Moruga

Containing three thousand one hundred and fifty nine point seven square metres

Surveyed by me, with due authority, in November 2009

In accordance with Regulation 25 (1) of the Land Surveyors' Regulations 1998 I certify that this plan is correct.

Checked by: *[Signature]*

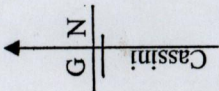
Entered CMIS: 19-05-2012

[Signature]
 Winston Ramcharan
 T T T L S
 Trinidad and Tobago Land Surveyor 13th February 2012



1433

26



Ward of Moruga
 County of Victoria
 Cadastral Sheet G 14 G 64 D
 2/a & 2/c

OROPUCHE ROAD 20.12 M WIDE

LAL ROOPCHAND
 3.2526 ha.

Parcel 1
 Bk. 968 Fol. 57

Parcel 2

Baboolal

SCALE 1: 2500

Distances are in metres

LOT #	C.T. Vol & Folio	Names.
1	5564 Fol 255	Lal Roopchand & Sugan Roopchand.
2	5564 Fol. 265	Kushie Sawh, Lal Roopchand, Sugan Roopchand.
3	5564 Fol 275	Rajtee Ramnarine Singh..... Lal Roopchand, Sugan Roopchand
4		s
5		
6		

