

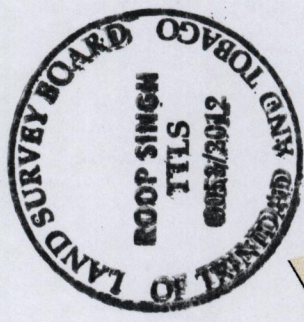
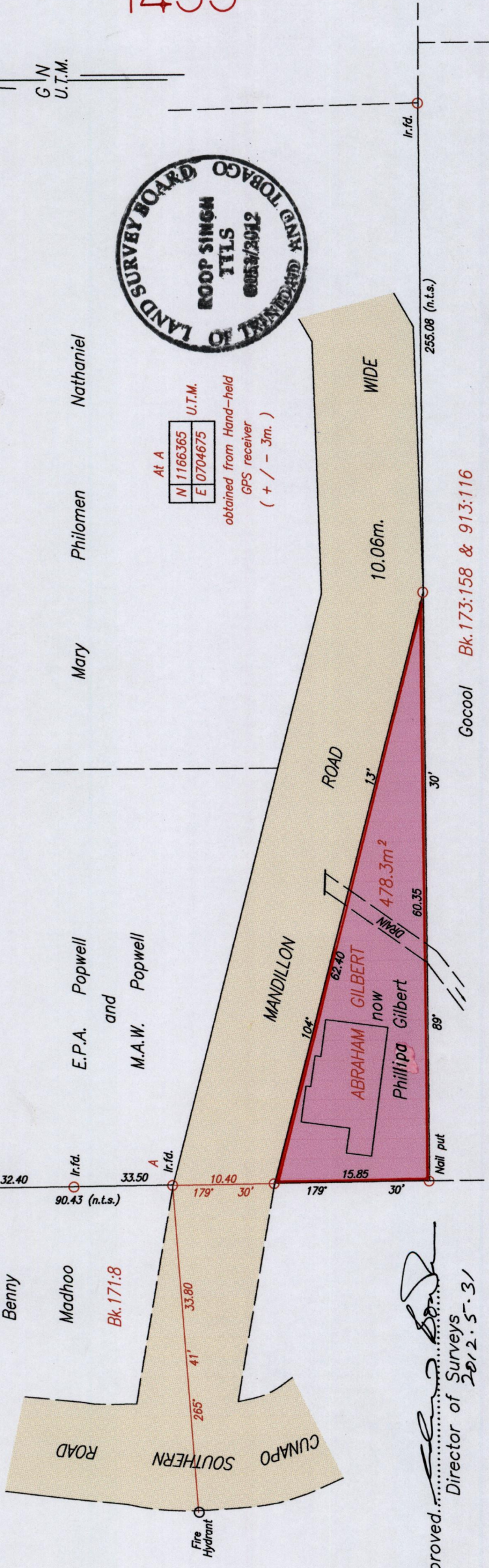
1433

24

R.P.O. Vol. 420
C.T. Vol. 676

Ward of Turure
County of St. Andrew
Cadastral Sheet E.2.J. $\frac{35C}{1/b}$

See Bk. 723:75



At A

N	1166365
E	0704675

U.T.M.
obtained from Hand-held
GPS receiver
(+ / - 3m.)

Approved: *[Signature]*
Director of Surveys
20/2.5.31

SCALE 1 / 500

Plan of a Parcel of land coloured pink in the Ward of Turure
Containing four hundred and seventy-eight point three square metres
Surveyed by me, with due authority, on 24th August 2011
In accordance with Regulation 25 (1) of the Land Surveyors' Regulations 1998,
I certify that this plan is correct.

Distances are in metres
o Denotes Iron put unless otherwise stated
Bearings are U.T.M. Grid based on Solar Observations

Checked by *[Signature]* T.T.L.S.
Entered on 12/16 Sept 2011

1433/24

1435/24



1435/24