

R.P.O. Vol. 329 Fol. 151

Cadastral Sheet 24F/4/c, D.5.E.&I.

C.T. Vol. 3402 Fol. 515

Ward of San Rafael

C.T. Vol. 5526 Fol. 139

U.P.I.N. No.

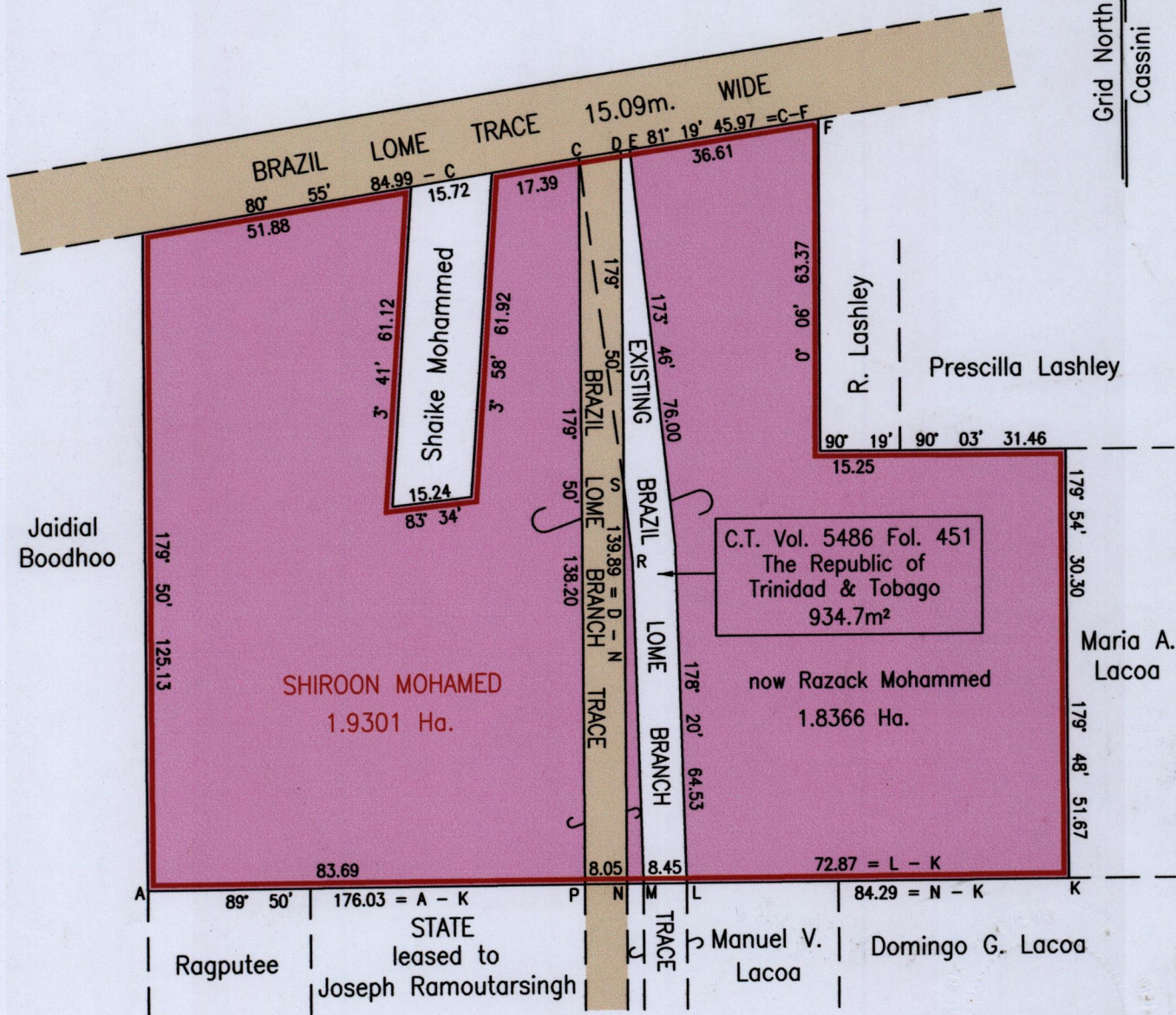
REMAINING PORTION

County of St. George

"L.P. No. 56 BRAZIL LOME TRACE, BRAZIL VILLAGE"

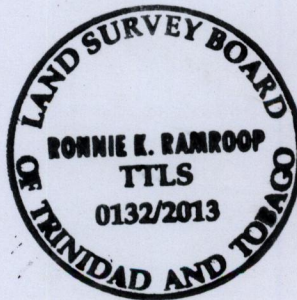
Vide Bk 1189:139 Plan J.R.76

Grid North Cassini



Approved

Signature of Director of Surveys, 2013.2.7



LINE	BEARING	DIST.
C - D	81° 19'	8.15
D - E	81° 19'	1.21
D - S	179° 50'	66.25
S - N	179° 50'	73.64
S - R	173° 00'	12.08
R - M	178° 20'	61.66

E	688592.18
N	1167030.15

Reliability Error ± 5.0 m.

Coordinates are UTM Zone 20, Naparima 1955 from Garmin GPSmap 60CSx Handheld GPS Receiver

Bearings are Cassini Grid based on Solar Obs.

Plan of one point nine three zero one hectares originally transferred to Shiroon Mohamed showing a portion coloured pink containing one point eight three six six hectares being the remainder after one previous transfer of another portion of the land.

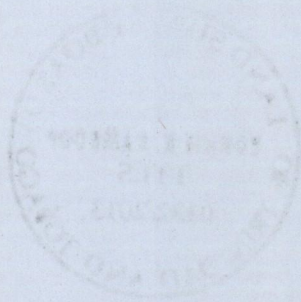
In accordance with Regulation 25(1) of the Land Surveyors Regulations 1998,

I certify that this plan represents the remaining portion.

Checked by [Signatures]

Entered on Trinidad & Tobago Land Surveyor 10th January 2013

SCALE 1:1250 Distances are in Metres



1433/225