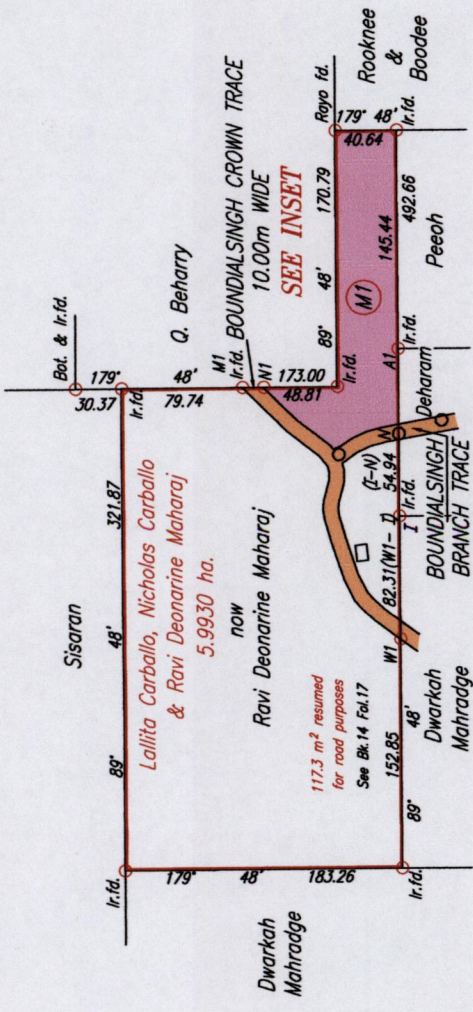


R.P.O. Vol. 56  
 C.T. Vol. 5065  
 C.T. Vol. 5565

Fol. 333  
 Fol. 525  
 Fol. 117

Cadastral Sheet D.5.P. 35A & 35A  
 2/c 2/d  
 Ward of Tamana  
 County of St. Andrew

INSET



References:  
 Bk. 14 Fol. 17  
 Bk. 7 Fol. 165  
 Plan E.B. 19  
 Plan P.K. 71

Coordinates of M1 (Ir.f.d.): 0695456mE, 1165481mN  
 U.T.M. 20 WGS 84 (+/- 6.00m)  
 G.P.S. Direct Observation

Approved *[Signature]*  
 Director of Surveys 2013.2.5

SCALE 1:5000  
 Distances are in METRES

Denotes Iron put except where otherwise stated  
 Bearings are Cassini Grid based on Solar Observations

PLAN of a Parcel of land coloured pink in the Ward of Tamana

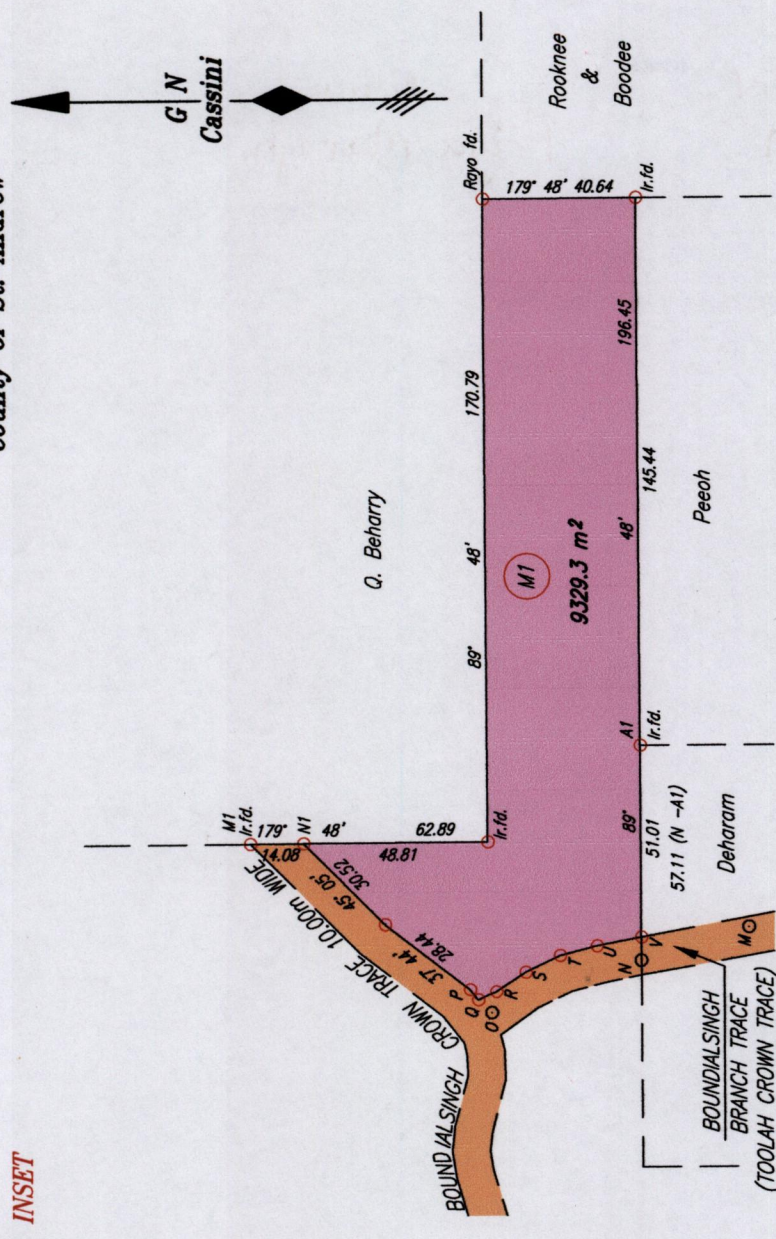
Containing nine thousand three hundred and twenty nine point three square metres  
 Surveyed by me, with due authority, in September 2012

Certified Correct in accordance with Regulation 25 (1) of The Land Surveyors' Regulations 1998,

Checked by *[Signature]* 5/2/13

Entered on .....

Trinidad & Tobago Land Surveyor  
 C:\LESS 2012\MAHARAJ\MAHARAJ\RAVI-CUMUTO-SEPT2012.dwg FILE NO. MG51



LEGEND

From	To	Bearing	Distance
V	U	349° 19'	12.01
U	T	345° 45'	10.09
T	S	334° 17'	10.13
S	R	326° 46'	9.37
R	Q	335° 32'	5.28
Q	P	52° 07'	3.49
M	N	342° 58'	29.90
N	O	340° 57'	42.01
O	Q	42° 48'	4.99

N.B.: P - V denotes peg pt.

SCALE 1:2000  
 Distances are in METRES



1433

223

Lot #	C.T. Vol & Fol	NAMES
M1	5565 fol 119	Priya Marajh.



1433/2223