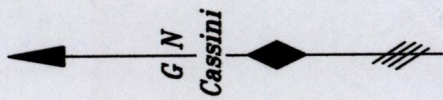


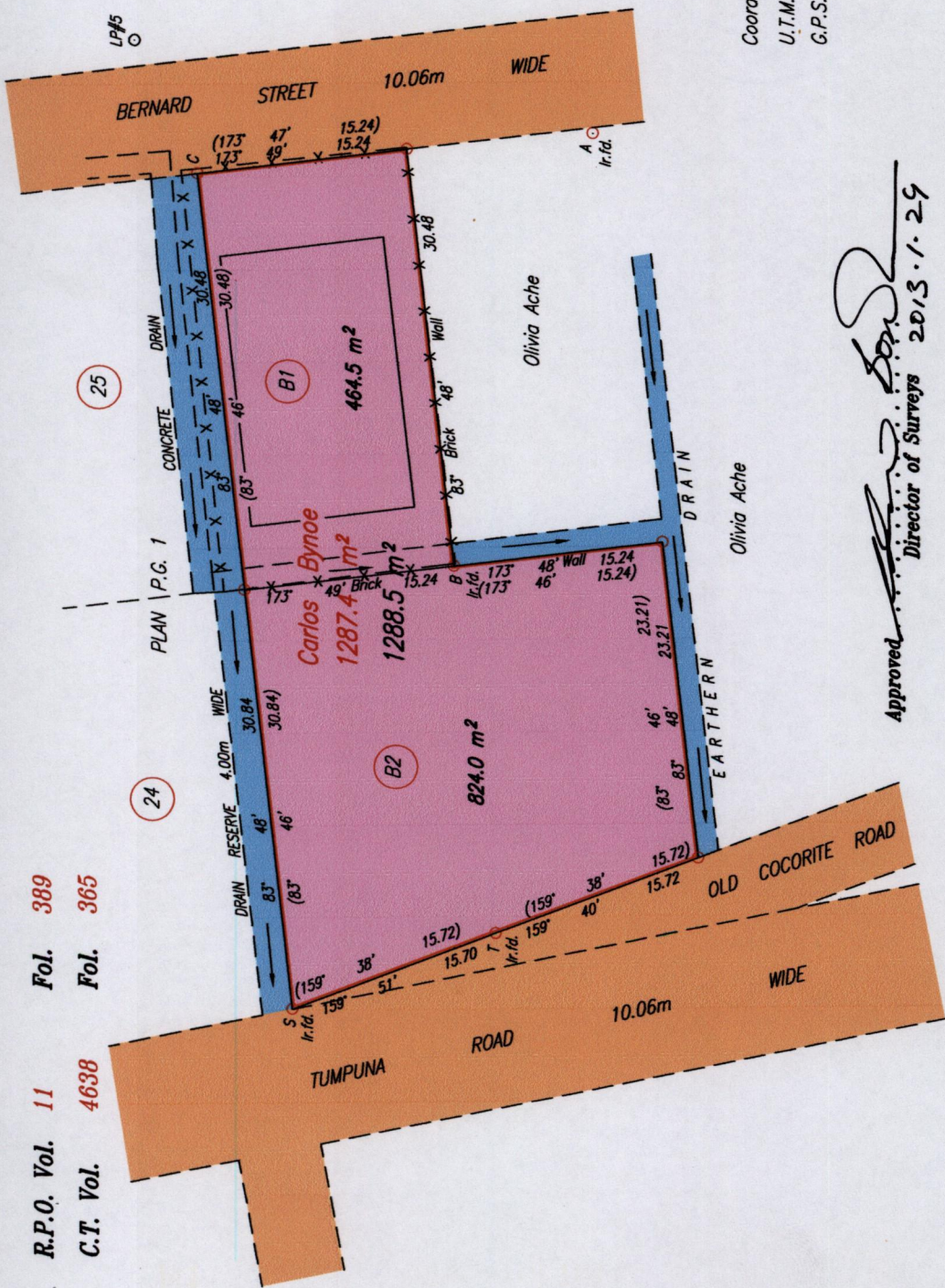
See Vide Plan X. D. 77
Bk. 504 Fol. 3
Plan P.G. 1

C - LP#5 65' 07" 10.73
C - A 174' 38" 28.77



Coordinates of A (r.f.d.): 0688690mE, 1175687mN
U.T.M. 20 WGS 84 (+/- 5.00m)
G.P.S. Direct Observation

SCALE 1:500
Distances are in METRES



Approved: *[Signature]*
Director of Surveys 2013.1.29

○ Denotes Iron put except where otherwise stated

Bearings are Cassini Grid based on Solar Observations

PLAN of 2 Parcels of land coloured pink in the Borough of Arima

Containing together one thousand two hundred and eighty eight point five square metres

Surveyed by me, with due authority, on the 5th November 2011

Certified Correct in accordance with Regulation 25 (1) of The Land Surveyors' Regulations 1998,

Checked by *[Signature]* 24/1/10

Entered on

Trinidad & Tobago Land Surveyor *[Signature]* 2012
C:\LESS 2011\B\NOE\CARLOS-TUMPUNA RD-ARIMA-NOV 2011.dwg FILE NO: B066

1433

222

1433/222

1433/222

