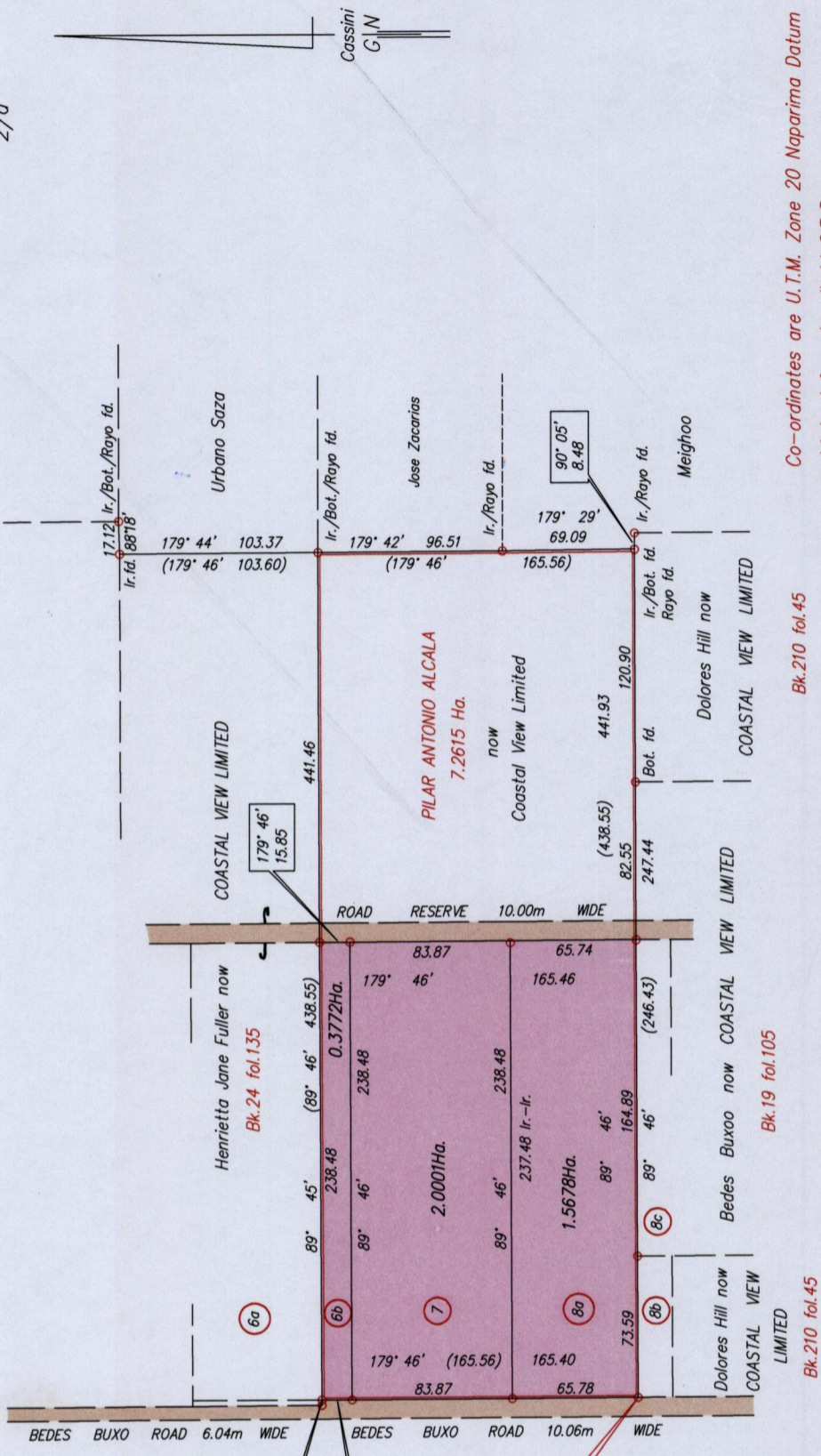
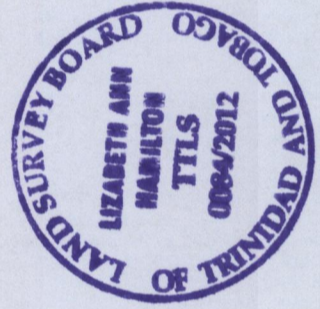


Ward of Tamana
County of St. Andrew
Cadastral Sheet E.1.K., 35B
2/a



Co-ordinates are U.T.M. Zone 20 Naparima Datum +/-5m
obtained from handheld G.P.S.

Plots 6a, and 6b to be amalgamated
Plots 8a, 8b and 8c to be amalgamated



R.P.O. Vol. 107 fol. 1
C.T. Vol. 5392 fol. 375A
C.T. Vol. 5660 fol. 375
WIDE Bk.17 fol.123

Approved
[Signature]
Director of Surveys 2013.1.25

SCALE 1:3500
o denotes Ir.pt. unless otherwise stated
Distances are in metres
Bearings are Cassini Grid based on Solar Observations

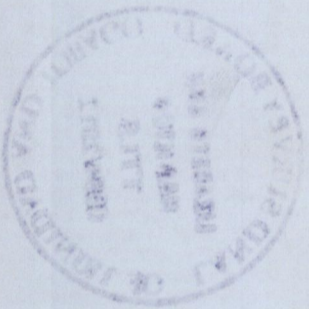
PLAN of 3 Parcels of land coloured pink in the Ward of Tamana
Containing together three point nine four five one hectares
Surveyed by me, with due authority, in June 2010
In accordance with Regulation 25(1) of the Land Surveyors Regulations 1998,
I certify that this plan is correct.

Checked by LR-23/01/13 *[Signature]*
Entered
Trinidad & Tobago Land Surveyor December 04 2012

Bk.19 fol.105

Bk.210 fol.45

Bk.210 fol.45



14231213