

R.P.O. Vol.122 fol. 333

C.T. Vol. 5392 fol. 375A

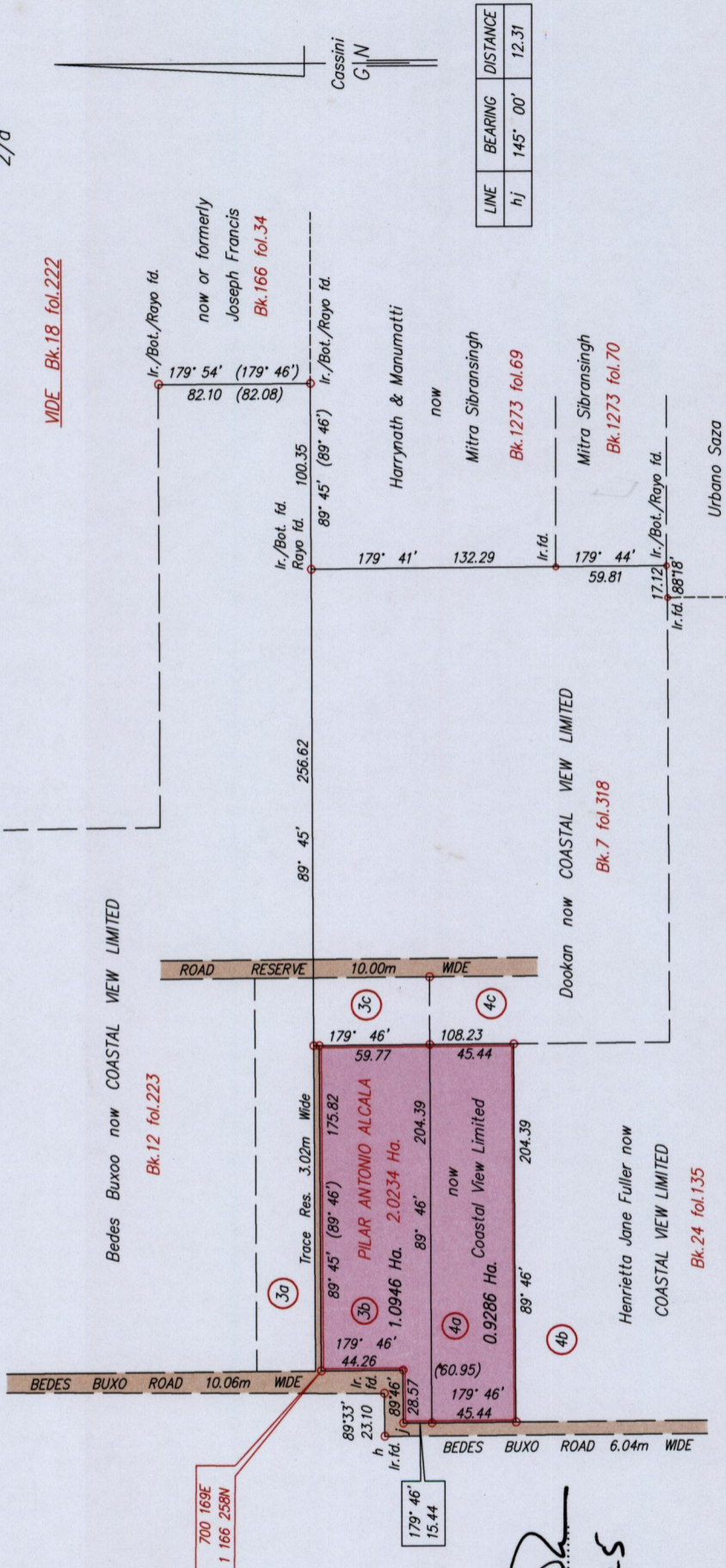
CT-Vol 5663 fol 373

Ward of Tamana

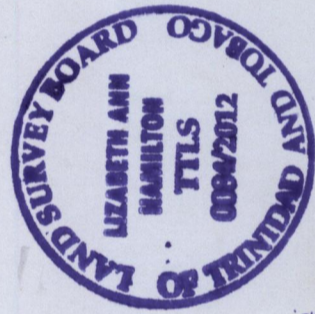
County of St. Andrew

Cadastral Sheet E.1.K., 35B
2/a

VIDE Bk.18 fol.222



LINE	BEARING	DISTANCE
hj	145° 00'	12.31



Co-ordinates are U.T.M. Zone 20 Naparima Datum +/-5m
obtained from handheld G.P.S.

Plots 3a, 3b and 3c to be amalgamated
Plots 4a, 4b and 4c to be amalgamated

Distances are in metres

Approved

 Director of Surveys
 2013.1.25

SCALE 1:3500

o denotes Ir.pt. unless otherwise stated

Bearings are Cassini Grid based on Solar Observations

PLAN of 2 Parcels of land coloured pink in the Ward of Tamana

Containing together two point zero two three two hectares

Surveyed by me, with due authority, in June 2010

In accordance with Regulation 25(1) of the Land Surveyors Regulations 1998,

I certify that this plan is correct.

Checked by LR-23/01/13
 Entered
 Elizabeth Hamilton
 Trinidad & Tobago Land Surveyor
 December 04 2012

LOT #	C. T. Vol & Folio	Names.
3a	5621 fol 377	Mustaifar & Halima Ali
3b	5663 fol 383	Mustaifar & Halima Ali
3c		
4a		
4b		
4c		



1433/211