

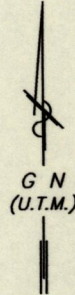
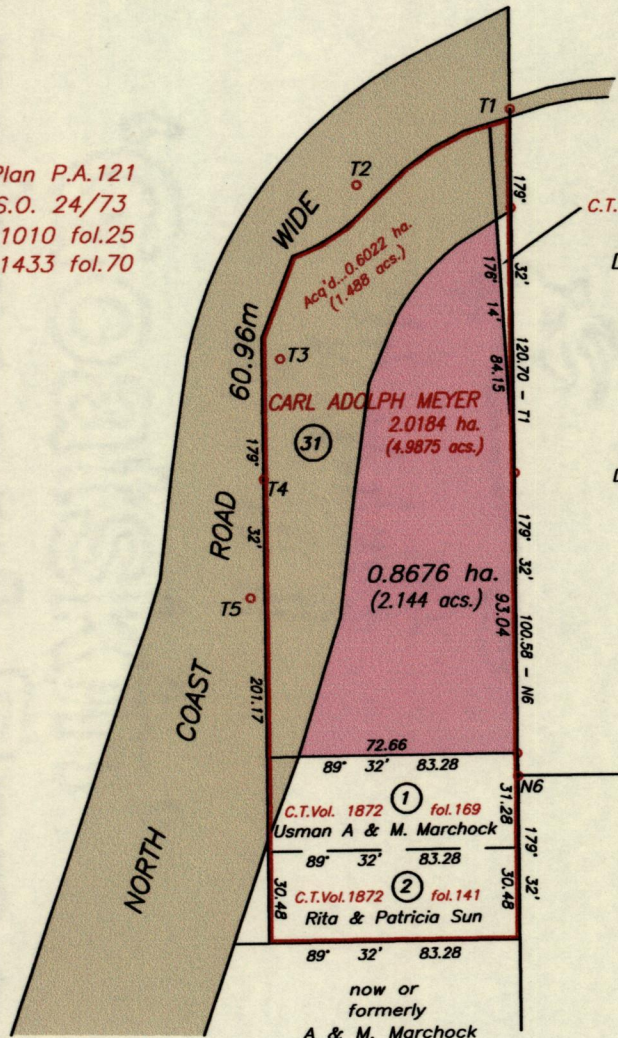
REMAINING PORTION

R.P.O. Vol...357.. Fol...543..
C.T. Vol.....1734... Fol...479...
C.T. Vol 5577 Fol. 439.

4A&D
Cadastral Sheet 2/d (B.3.0.)
Ward of Blanchisseuse
County of St. George

LA FILLETTE VILLAGE

VIDE : Plan P.A.121
S.O. 24/73
Bk.1010 fol.25
Bk.1433 fol.70



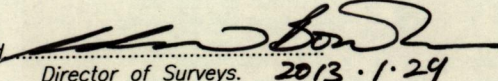
(A)
C.T.Vol.1963 fol.357
now or formerly
David Hochoy

now or formerly
David Hochoy

C/LINE OF NORTH COAST ROAD taken from S.O. 24/73

T1 - T2	244° 07'	56.77
T2 - T3	204° 02'	62.86
T3 - T4	188° 03'	40.31
T4 - T5	186° 35'	39.53
T5 - T6	198° 17'	402.22

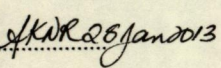
PARCEL	CT.VOL.	FOL.	AREA	
			HECTARES	ACRES
<u>ORIGINAL PARCEL</u>				
4	1734	479	2.0184	4.987
<u>TRANSFER</u>				
1	1872	165	0.2605	0.6438
2	1872	137	0.2529	0.625
A	1963	357	0.0352	0.087
<u>ACQUIRED</u>				
31	Plan P.A. 121		0.6022	1.488

Approved 
Director of Surveys. 2013.1.29

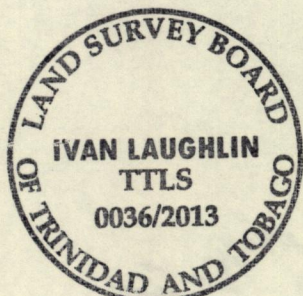
N6 - N:1194,582
E: 678,839
Coordinates obtained by hand held GPS
(UTM Zone 20, Naparima + 5.0m)

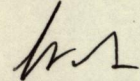
SCALE 1 : 2500
Distances are in Metres

PLAN of two point zero one eight four hectares, originally granted to Carl Adolph Meyer showing a portion coloured pink and containing zero point eight six seven six hectares, being the remainder after three previous transfers and one acquisition of other portions of the land. In accordance with Regulations 25 (1) of the Land Surveyors' Regulations 1998, I certify that this plan represents the remaining portion.

Checked by  25 Jan 2013

Entered.....




Trinidad & Tobago Land Surveyor (TTLS)
25 January 2013



1433/207