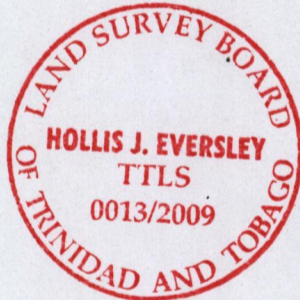
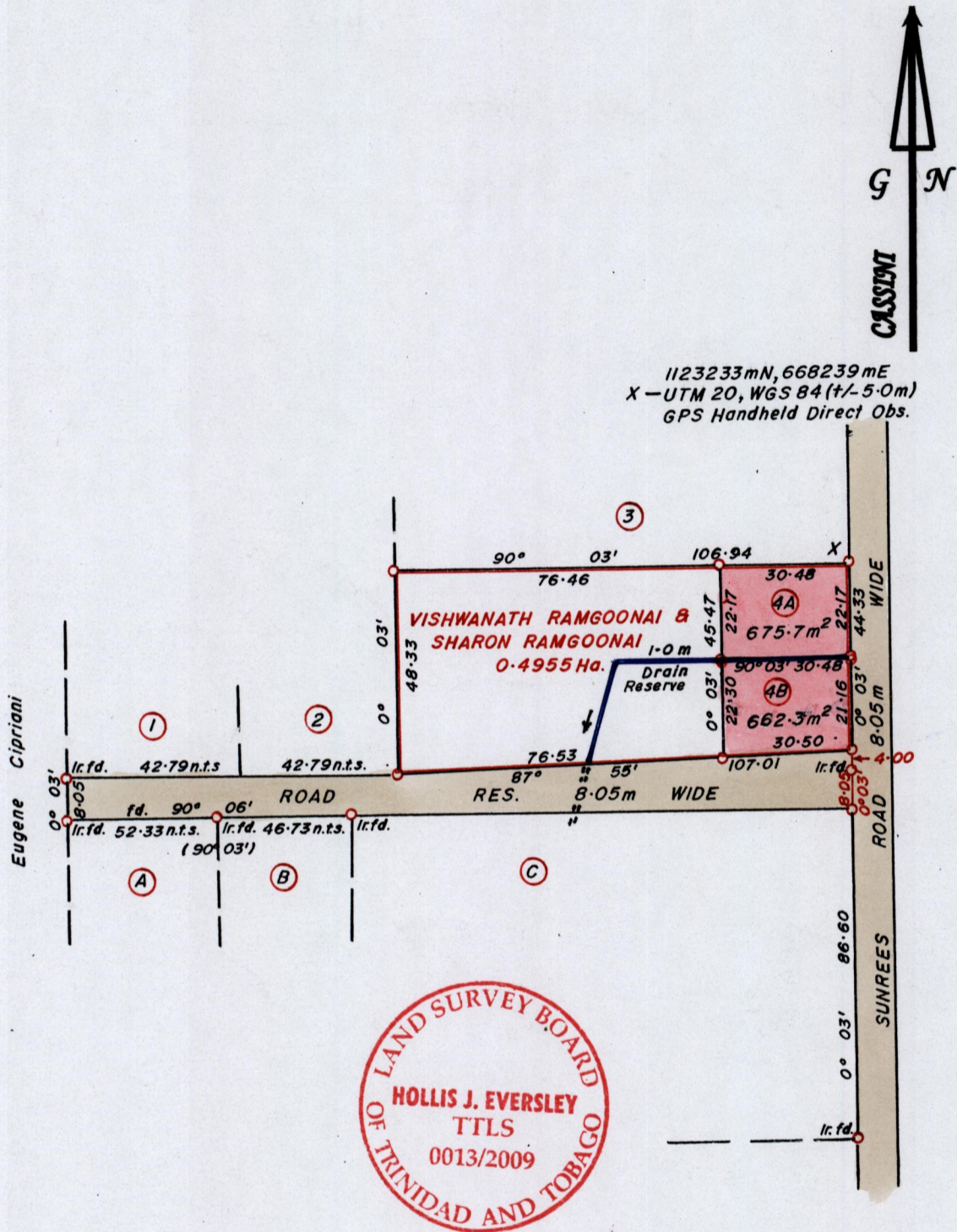


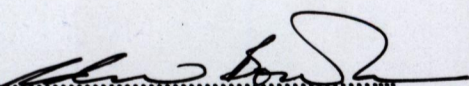
1433

206

R.P.O Vol. 92 Fol. 41
C.T. Vol. 3794 Fol. 149
C.T. Vol 5537 Fol. 301

Ward of Siparia.
County of St. Patrick.
Cadastral Sheet G.13.M. 63E
4/d.



Approved 
Director of Surveys. 2013.1.24

Bk. 1219 : 131.

SCALE 1 : 1500.

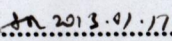
Distances are in METRES

o Denotes Iron Put except otherwise stated
Bearings are Cassini Grid based on Solar Observations.

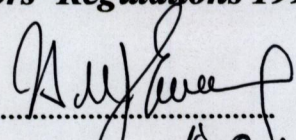
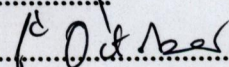
PLAN of 2 Parcels of land coloured in PINK in the Ward of Siparia.
Containing together one thousand three hundred and thirty eight point zero square metres.

Surveyed by me, with due authority, in June 2009.

In accordance with Reg. 25(1) of the Land Surveyors' Regulations 1998,
I certify that this plan is correct.

Checked by  2013.01.17

Entered


Trinidad and Tobago Land Surveyor  2009.

Lot No.	Ct. VOLUME & FOLIO	NAMES
4A	5537 fol. 309	ASRAPH HOSEIN
4B	5537 fol. 317	ASRAPH HOSEIN



1433/206