

R.P.O. Vol. 4 Fol. 41

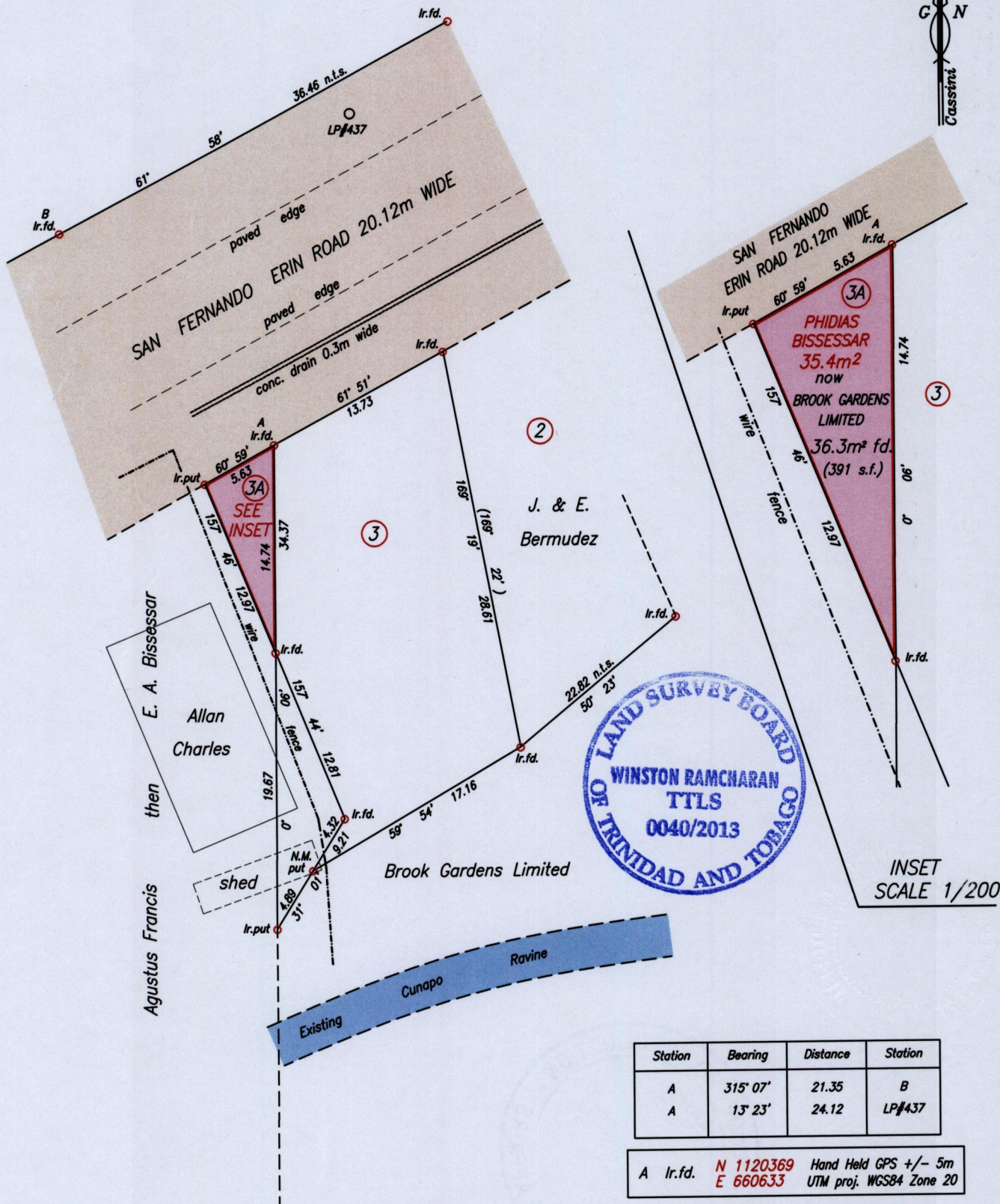
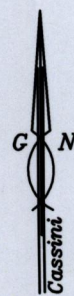
C.T. Vol. 1532 Fol. 329

Cadastral Sheet G.17.A. 73A

Ward of Siparia 2/c

County of St. Patrick

Quarry Village, Siparia



Approved

[Signature]
Director of Surveys 2013.1.22

SCALE 1/400
Distances are in metres

Bearings are Cassini Grid based on Solar Observations
PLAN of a Parcel of land coloured pink in the Ward of Siparia
Containing thirty six point three square metres
Surveyed by me with due authority in October 2012
Certified correct in accordance with Regulation 25 (1) of Land Surveyors Regulations 1998

Checked by *[Signature]* 21/1/13

[Signature]

Entered on.....

Trinidad & Tobago Land Surveyor 16th January 2013

↑
SP



1433/203