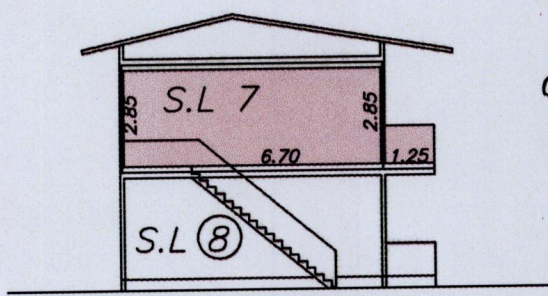
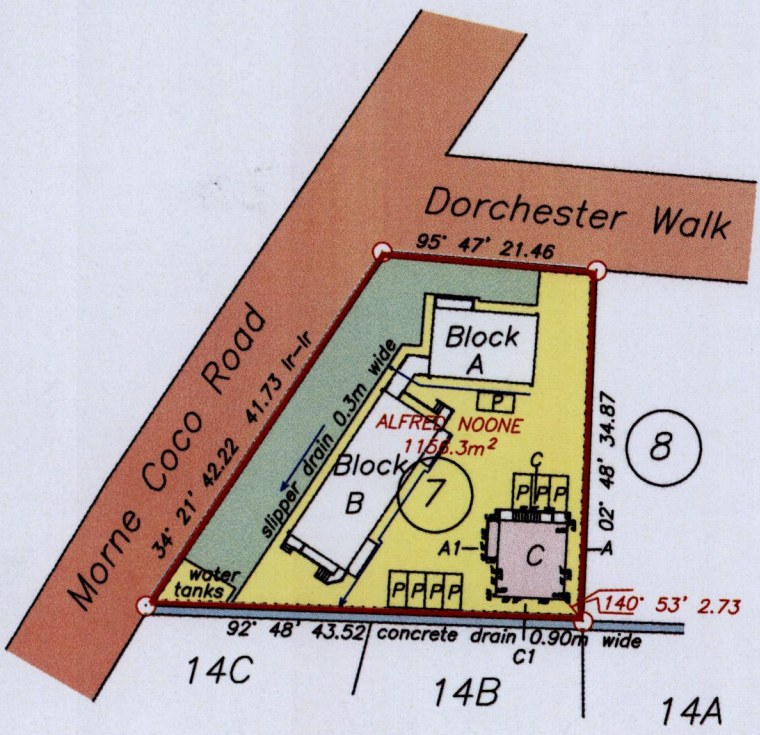


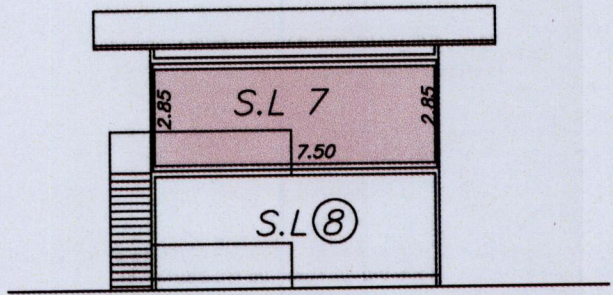
R.P.O. Vol. Fol.  
C.T. Vol. 1510 Fol. 299

Ward of Diego Martin  
County of St. George  
Cadastral Sheet A.14.L  $\frac{13D}{1/a}$

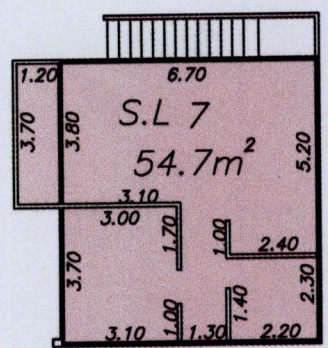
PETIT VALLEY PALMS



section A-A1  
SCALE 1/200



Section C-C1  
SCALE 1/200



SCALE 1/200

Common Area ■  
 Common Area ■  
 Parking P

Approved  
  
 Director of Surveys 2013.2.4

○ denotes boundary corners except where otherwise stated  
 Bearings are Cassini grid based on Solar observations  
 Note: To obtain compass bearings subtract minutes.



SCALE 1/750

Distances are in metres

PLAN of a Condominium apartment coloured pink in the Ward of Diego Martin  
 Containing fifty four point seven square metres  
 Surveyed by me, with due authority, in May 2011

In accordance with Regulation 25 (1) of the Land Surveyors' Regulations 1998,  
 I certify that this plan is correct.

Checked by 01/11/13  
 Entered..... 05th May 2012.  
 Trinidad & Tobago Land Surveyor



1433/202