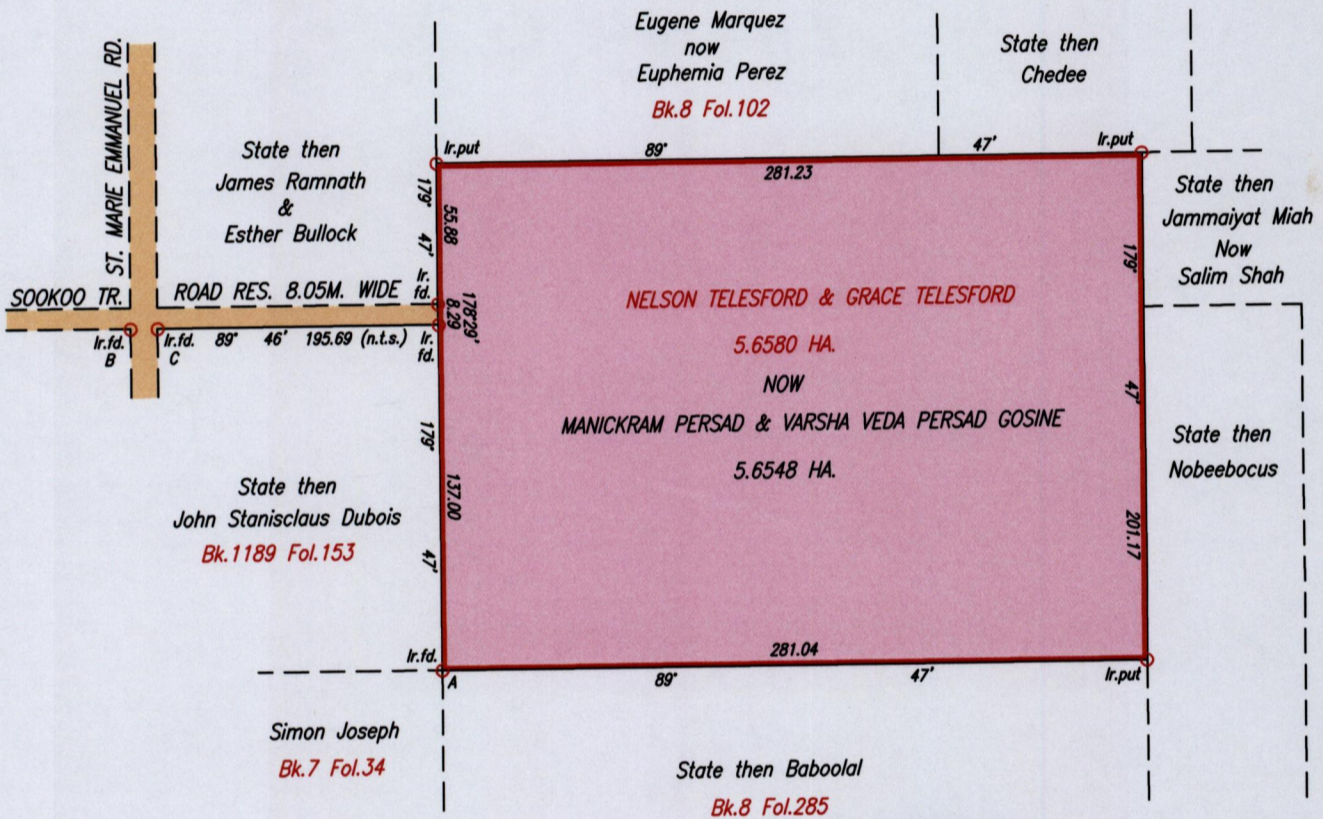
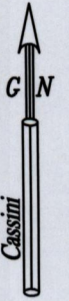


R.P.O. Vol. 27 Fol. 411
C.T. Vol. 2345 Fol. 35
See Bk.8 Fol.257

Ward of Tamana
County of St. Andrew
Cadastral Sheet 35A, (E.1.M.)
2/d

TAMANA



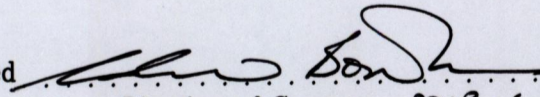
B - C 90° 00' 10.66



SCALE 1/3000
Distances are in Metres.

Iron A

696264 mE, 1164868 mN
U.T.M. 20, Nap. (+/- 4.0m.)
G.P.S. (Handheld)

Approved 
Director of Surveys 2013.1.22

Bearings are Cassini Grid based on solar Observations

PLAN of a Parcel of land coloured pink in the Ward of Tamana

Containing five point six five four eight hectares

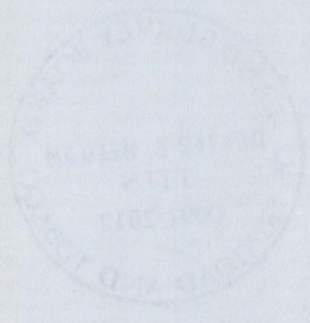
Surveyed by me, with due authority, in November 2011.

In accordance with Regulation 25 (1) of The Land Surveyors' Regulations 1998,

I certify that this plan is correct.

Checked by *mm* 18/1/2013

Entered on Trinidad & Tobago Land Surveyor. 19th November, 2012



1433/201