

1433

199

R.P.O. Vol. 150 Fol. 529

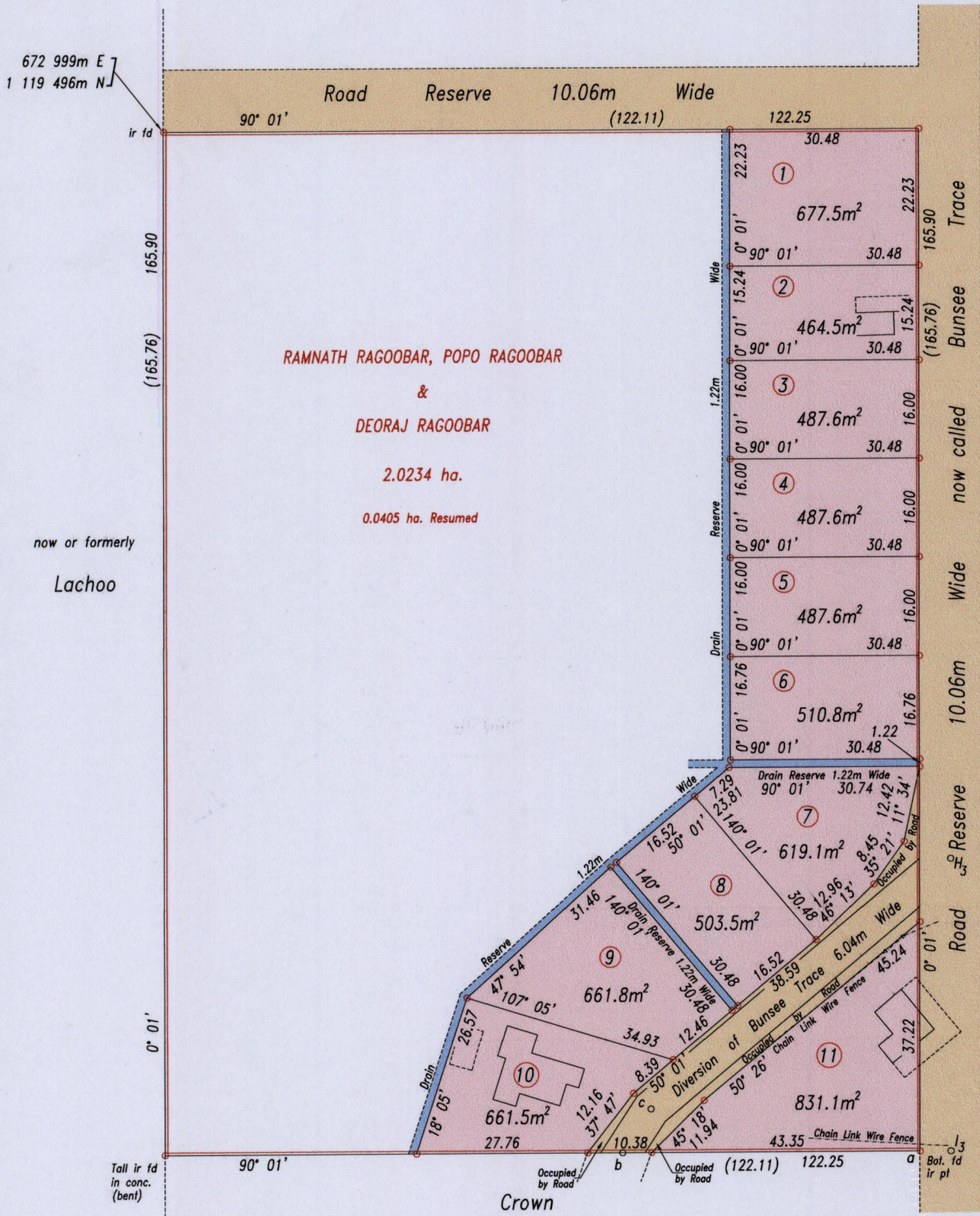
Ward of Siparia

C.T. Vol. 2474 Fol. 313

County of St. Patrick

U.P.I.N. No.:

Cadastral Sheet G.18.H. 73C
2/c, 2/d



G.N. Cassini

now or formerly
Lachoo

Tall ir fd
in conc.
(bent)

Crown
then
Meghoo

Source: GPS (Hand Held)
Error Statement: +/- 5m
Datum: Naparima, UTM (Zone 20).

Approved
[Signature]
Director of Surveys 2013.1.22

Sta. - Sta.	Bearing	Distance
a - b	270° 01'	48.04
a - l ₃	90° 01'	5.03
l ₃ - H ₃	0° 01'	47.50
b - c	33° 02'	8.45
c - H ₃	50° 12'	63.10

References: Bk.399 Fol.96
Plan K.H. 25

SCALE 1: 1000

Distances are in metres

o Denotes iron put except otherwise stated

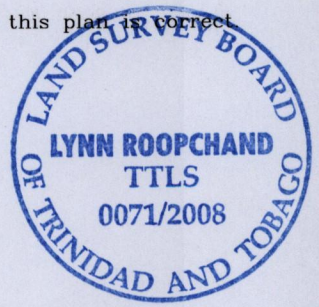
Bearings are Cassini Grid based on Solar Observations

PLAN of 11 parcels of land coloured pink in the Ward of Siparia
Containing together six thousand three hundred and ninety two point six square metres
Surveyed by me, with due authority, in December 2008

In accordance with Regulation 25(1) of the Land Surveyors' Regulations 1998, I certify that this plan is correct

Checked by *[Signature]* 17/1/2013
Entered

[Signature]
Trinidad & Tobago Land Surveyor 29/12/2008





1433/199