

1433

1983

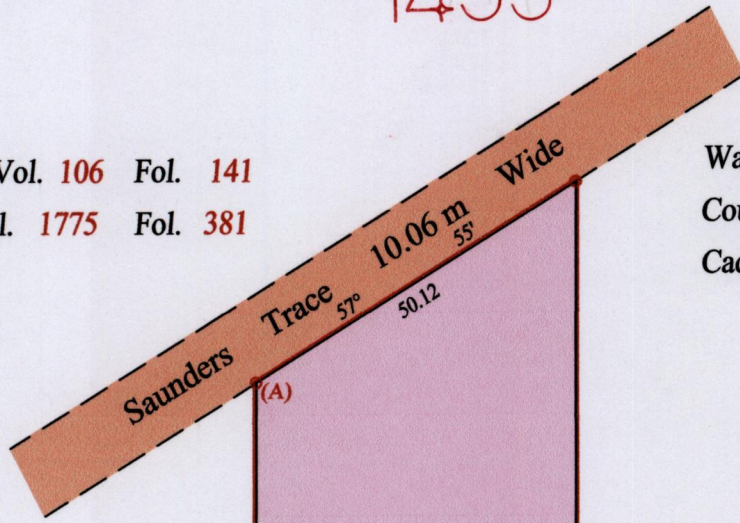
R.P.O. Vol. 106 Fol. 141

C.T. Vol. 1775 Fol. 381

Ward of Ortoire

County of Victoria

Cadastral Sheet G.15.C 64.F. 1/a



SAHADEO PUNDIT

7410.2 m²

now

Aszad Mohammed
and Salisha Ali -
Mohammed

①

7421.4 m²
fd. on resurvey

State

179°

56'

160.93

55.22

105.71

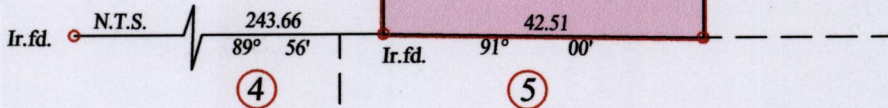
Ir.f.d.

179°

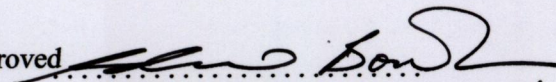
188.29

56'

②



At Station (A)
E 0685610
N 1126910
Reading taken with
Handheld G.P.S.
U.T.M. Zone 20
Naparima
± 5 m.

Approved 
Director of Surveys 2013.1.11

Vide Bk. 997 fol. 150

○ Denotes Iron put except stated otherwise.

SCALE : 1:1000

Note: Bearings are cassini grid based on solar observations

Distances are in metres

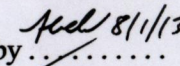
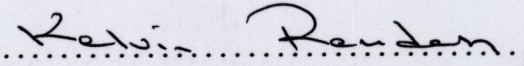
PLAN of a Parcel of land coloured pink in the Ward of Ortoire

Containing seven thousand four hundred and twenty one point four square metres

Surveyed by me, with due authority, in July 2012

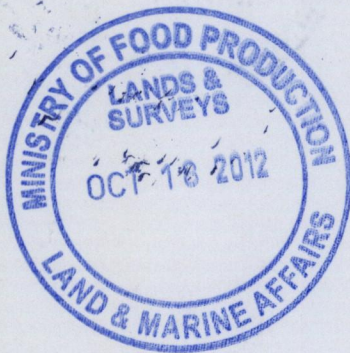
In accordance with Regulation 25 (1) of the Land Surveyors' Regulations 1998,

I certify that this plan is correct.

Checked by  8/1/13 

Entered on Trinidad & Tobago Land Surveyor 01/10/.....2012





1433/198