

1433

1833

REMAINING PORTION

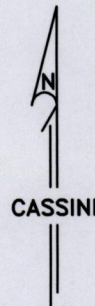
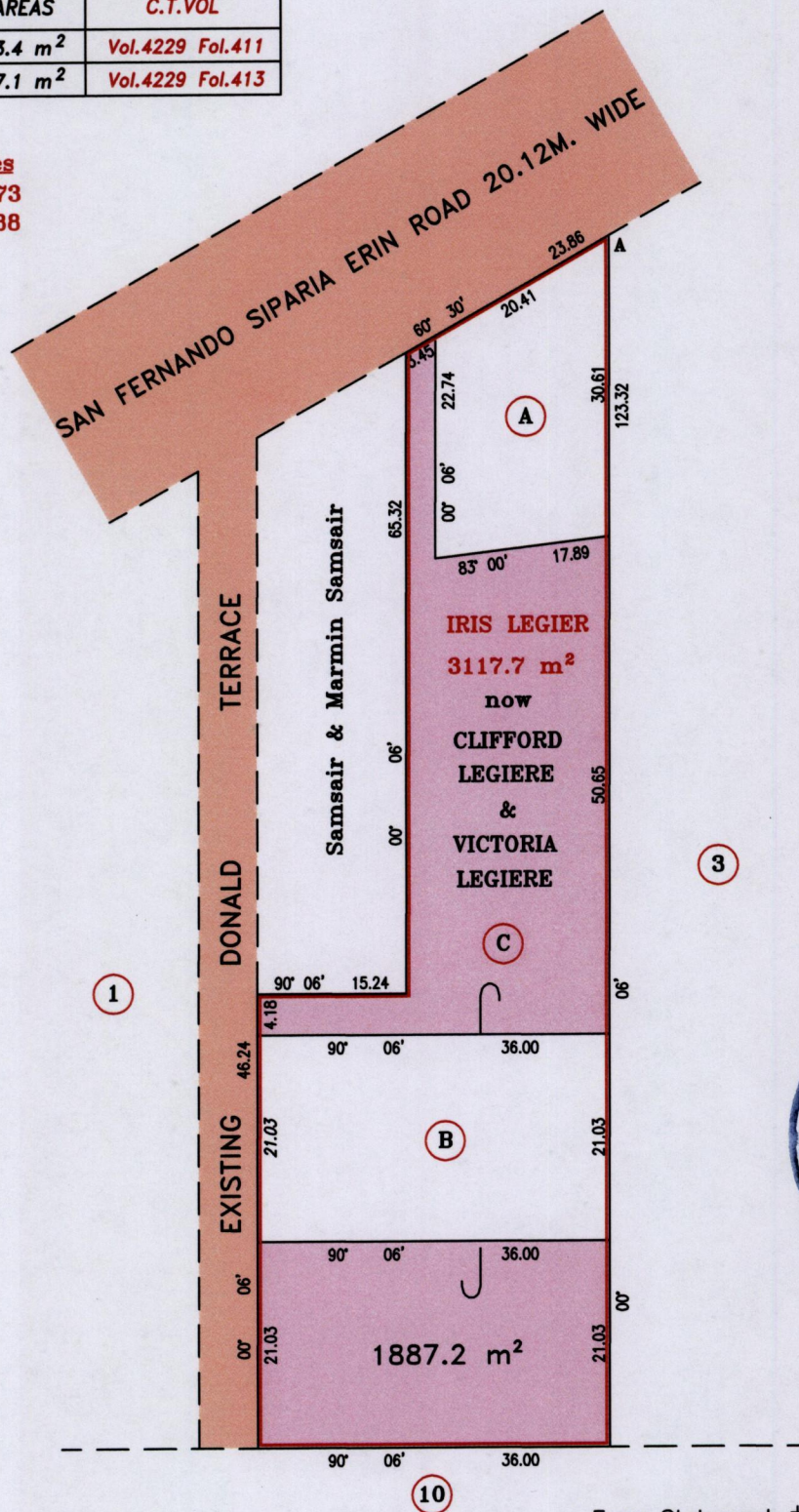
Vol. 5535 Fol. 215  
R.P.O. Vol. 807 Fol. 499  
C.T. Vol. 1324 Fol. 35

Ward of Siparia  
County of St. Patrick  
Cadastral Sheet (G.17.E.)  $\frac{73A}{1/d}$

PROCESS ID # 55228

LOT NOS.	AREAS	C.T.VOL
A	473.4 m <sup>2</sup>	Vol.4229 Fol.411
B	757.1 m <sup>2</sup>	Vol.4229 Fol.413

Co-ordinates  
A : N 1119773  
E 660288



Error Statement: ± 4m  
Datum Definition: U.T.M. Zone 20 Naparima  
Source: Garmin Vista Hand Held GPS

Approved

*[Signature]*  
Director of Surveys 2013.1.11

SCALE: 1:750

Note: Bearings are CASSINI Grid based on solar observations.

Distances are in metres.

This is a true copy of a diagram of three thousand one hundred and seventeen point seven square metres, originally transferred to IRIS LEGIER. showing a portion coloured pink containing one thousand eight hundred and eighty seven point two square metres being the remainder after 2 previous transfers of other portions of the land.

In accordance with Regulation 25(1) of the Land Surveyors' Regulations 1998, I certify that this plan is correct.

Checked by *[Signature]* 8/1/13

*[Signature]*

Entered .....

Trinidad & Tobago Land Surveyor 20-June-2012

