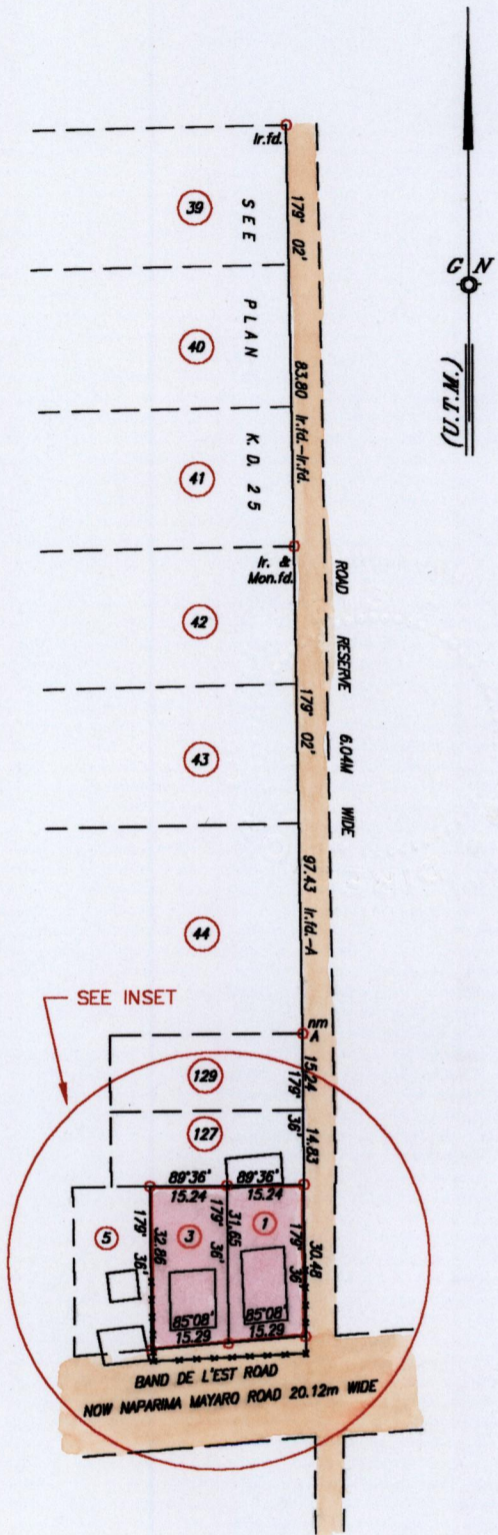
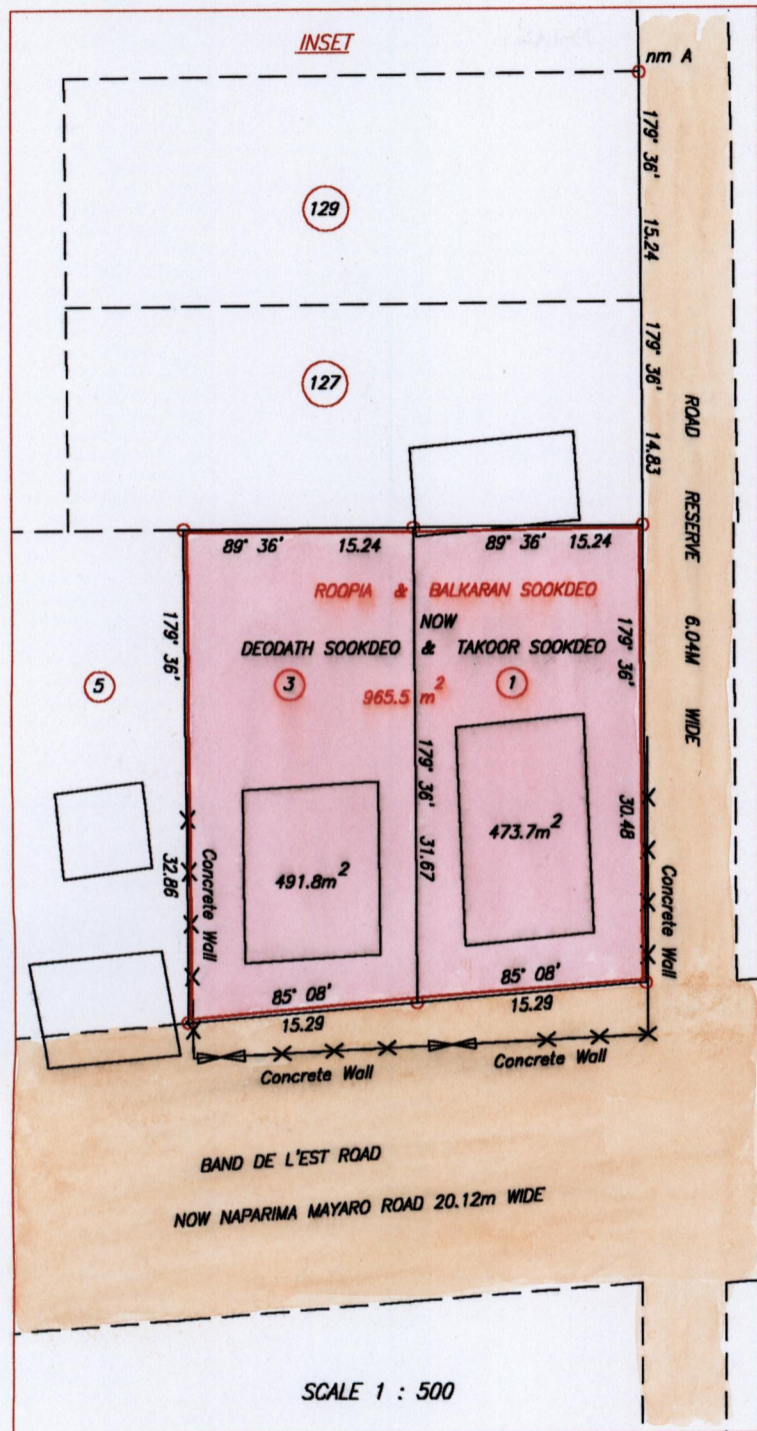


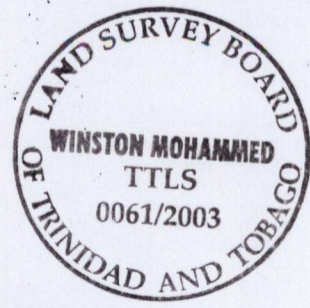
See Bk. 327 Fol.161
 See PLAN B.E. 3



Approved: *[Signature]*
 Director of Surveys 2012.5.25

o Denotes Iron put except otherwise stated.
 nm Denotes No Mark
 Bearings are U.T.M. grid based on solar observations Distances are in metres
 Plan of two parcels of land coloured pink in the Ward of Ortoire
 Containing together nine hundred and sixty four point eight square meters
 Surveyed by me, with due authority in June, 2002
 In accordance with Regulation 25 (1) of the Land Surveyors' Regulations 1998,
 I certify that this plan is correct.

Checked by: *[Signature]*
 Entered: Trinidad and Tobago Land Surveyor, 9/9/2003



Scale 1 : 1500

26 SEP 2003
Lands and
Surveys
Division

1433/18