

REMAINING PORTION

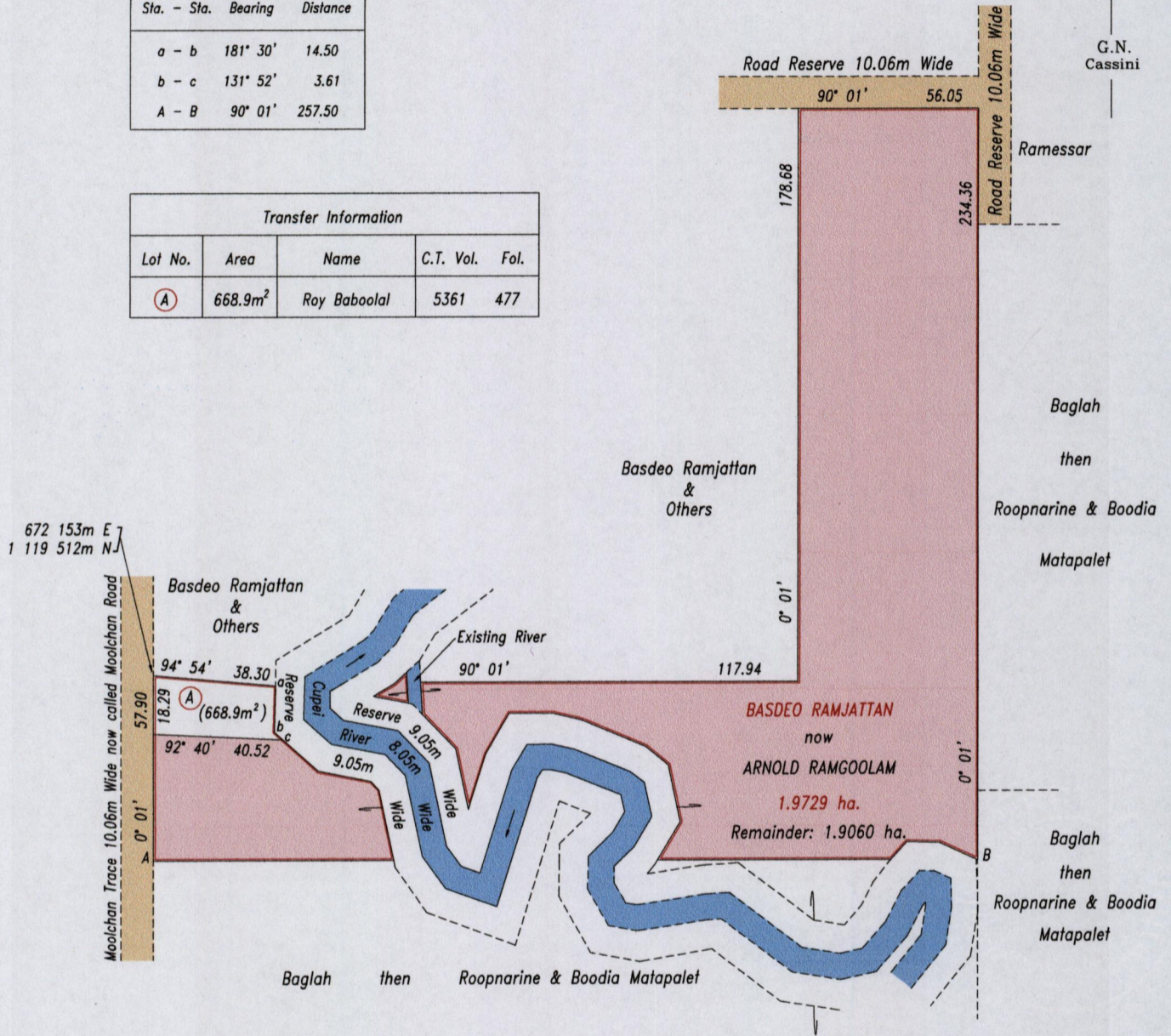
R.P.O. Vol. 173 Fol. 65
C.T. Vol. 4792 Fol. 245
U.P.I.N. No.:

Cadastral Sheet G.18.G. 73C
County of St. Patrick
Ward of Siparia

Reference: Bk.402 Fol.245
Bk.1336 Fol.74

Legend		
Sta. - Sta.	Bearing	Distance
a - b	181° 30'	14.50
b - c	131° 52'	3.61
A - B	90° 01'	257.50

Transfer Information				
Lot No.	Area	Name	C.T. Vol.	Fol.
(A)	668.9m ²	Roy Baboolal	5361	477



Approved *[Signature]*
Director of Surveys 2013.1.8

Coordinate Information
Source: GPS (Hand Held)
Error Statement: +/- 5m
Datum: Naparima, UTM (Zone 20)

SCALE 1: 2000
Distances are in metres

This is a true copy of a diagram of one point nine seven two nine hectares originally transferred to BASDEO RAMJATTAN, showing a portion coloured pink and containing one point nine zero six zero hectares being the remainder after one (1) previous transfer of another portion of the land. In accordance with Regulation 25(1) of the Land Surveyors' Regulations 1998, I certify that this plan is correct.

Checked by *mm 27/12/12*
Entered
L.A. Forcand
Trinidad & Tobago Land Surveyor 26/9/2012



