

REMAINING PORTION

C.T. Vol. 2690 Fol. 33

Ward of Savana Grande

C.T. Vol. 3639 Fol. 167B

County of Victoria

C.T. Vol 5565 Fol. 73

Cadastral Sheet G.14.D. & H. 64D
2/b, 2/d

U.P.I.N. No.:

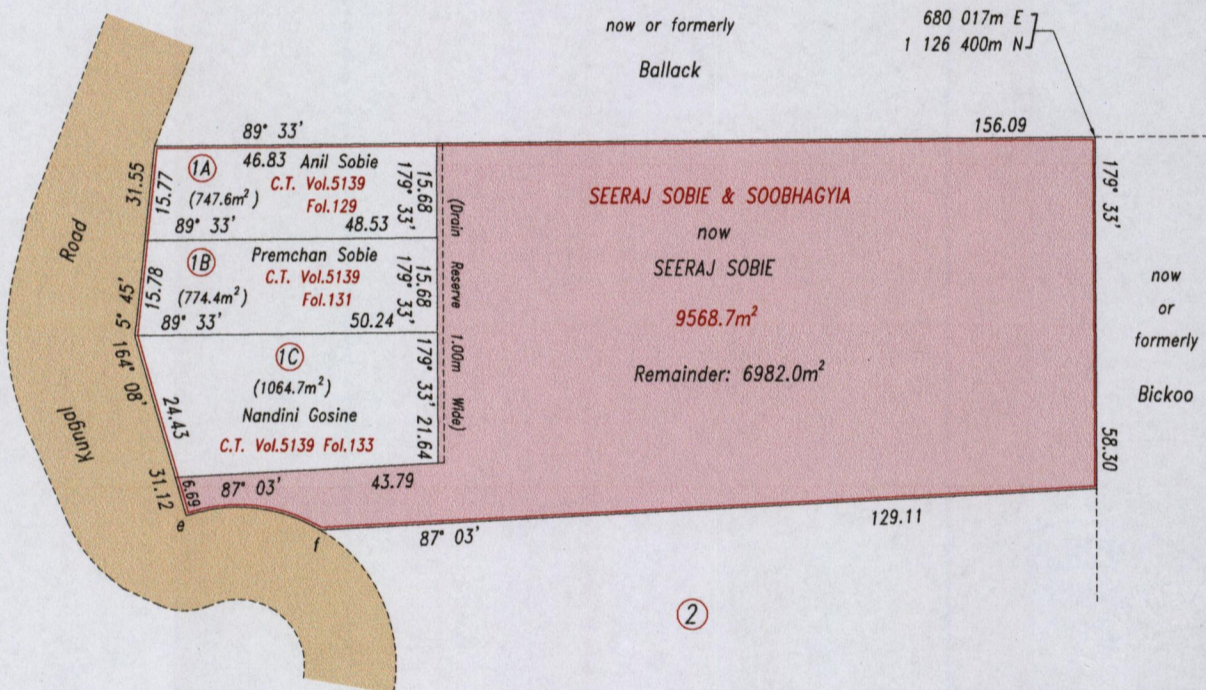
Consolidated Plan Filed in Vol. 2690 Fol. 31

Reference: Bk.1137 Fol.194

General Plan Filed in Vol. 5139 Fol. 117

Bk.1148 Fol.88

G.N.
Cassini



Legend		
e - f	96° 10'	22.38

Coordinate Information	
Source:	GPS (Hand Held)
Error Statement:	+/- 10m
Datum:	Naparima, UTM (Zone 20).

Approved

[Signature]
 Director of Surveys 2013.1.8

SCALE 1: 1250

Distances are in metres

This is a true copy of a diagram of nine thousand five hundred and sixty eight point seven square metres originally transferred to SEERAJ SOBIE & SOOBHAGIYA, showing a portion coloured pink and containing six thousand nine hundred and eighty two point zero square metres being the remainder after three (3) previous transfers of another portion of the land. In accordance with Regulation 25(1) of the Land Surveyors' Regulations 1998, I certify that this plan is correct.

Checked by *MM* 27/12/12

L.A. Fipeland
 29/8/2012
 Trinidad & Tobago Land Surveyor

Entered



LOT #	C.T. Vol & Folio	Names.
1A	5565 fol 75	Premchand Sobie
1B		
1C		

