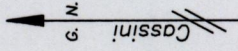


13A
3/c

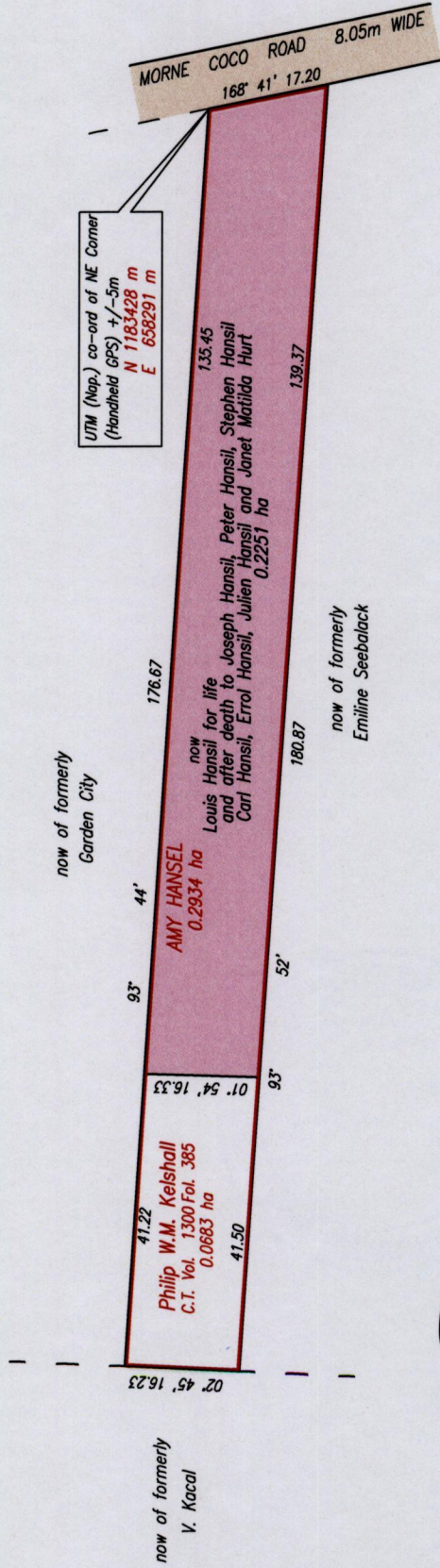
Cadastral Sheet A.14.P
Ward of Diego Martin
County of St. George



Remaining Portion

C.T. Vol. 1206 Fol. 493

Vide
Bk. 1212 fol. 185
Bk. 1017 fol. 75
Bk. 892 fol. 63,64



UTM (Nap.) co-ord of NE Corner
(Handheld GPS) +/- 5m
N 1183428 m
E 658291 m



SCALE 1:1000
Distances are in metres

Approved
Director of Surveys 2013.1.7

Bearings are Cassini grid and based on solar observations

Diagram of zero point two nine three four hectares originally transferred to Amy Hansel showing a portion coloured pink and containing zero point two two five one hectares being the remainder after one (1) previous transfer of another portion of the land.

In accordance with Regulation 25 (1) of The Land Surveyors' Regulations 1998, I certify that this diagram is correct.

.....
Trinidad & Tobago Land Surveyor.

Checked by
Entered on

1433 1433

175

