

REMAINING PORTION

R.P.O. Vol. 123 Fol. 209

C.T. Vol. Fol.

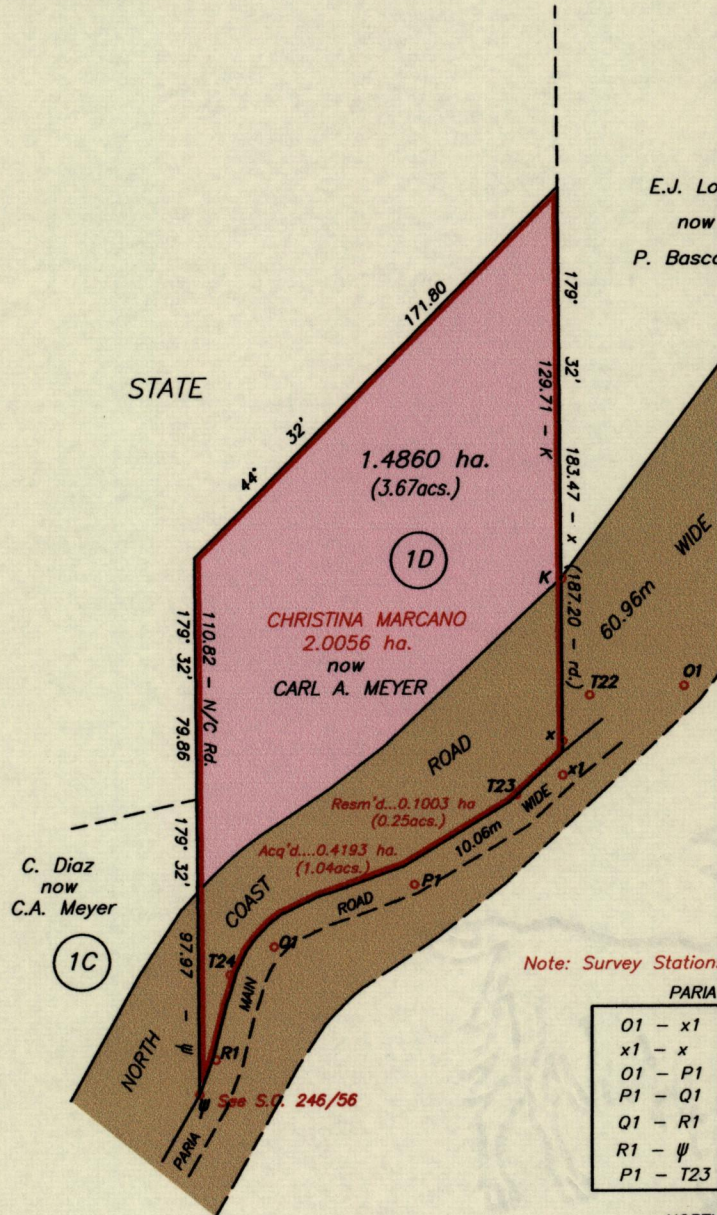
Cadastral Sheet 4A&D (B.8.C)

2/c

Ward of Blanchisseuse

County of St. George

Process ID # 58408



Note: Survey Stations taken from SO 24/73

PARIA MAIN ROAD

O1 - x1	233° 48'	49.69
x1 - x	359° 32'	12.14
O1 - P1	233° 48'	110.76
P1 - Q1	246° 32'	50.90
Q1 - R1	207° 17'	41.98
R1 - ψ	205° 27'	12.83
P1 - T23	48° 46'	44.94

NORTH COAST ROAD

T22 - T23	216° 31'	137.07
T23 - T24	238° 10'	111.89

K- N:1192579 +/- 5.0m (U.T.M.)
E: 666878
(Hand held GPS.)

Approved: Director of Surveys 2013.1.7

Ref. Bk. 1140 fol. 205
Plan P.A.121

SCALE 1 : 2500
Distances are in metres.

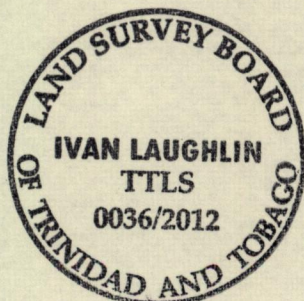
PLAN of two point zero zero five six hectares, originally granted to Christina Marcano, showing a portion coloured pink and containing one point four eight six zero hectares, being the remainder after one resumption and one acquisition of other portions of the land. In accordance with Regulations 25(1) of the Land Surveyors Regulations 1998, I certify that this plan represents the remaining portion.

Checked by: 12-07/01/13

Trinidad & Tobago Land Surveyor (TTLS)

Entered:

18 December 2012.



H

MINISTRY OF FOOD PRODUCTION
LANDS & SURVEYS
JAN 03 2013
LAND & MARINE AFFAIRS

'Goatskin' Parchment Paper