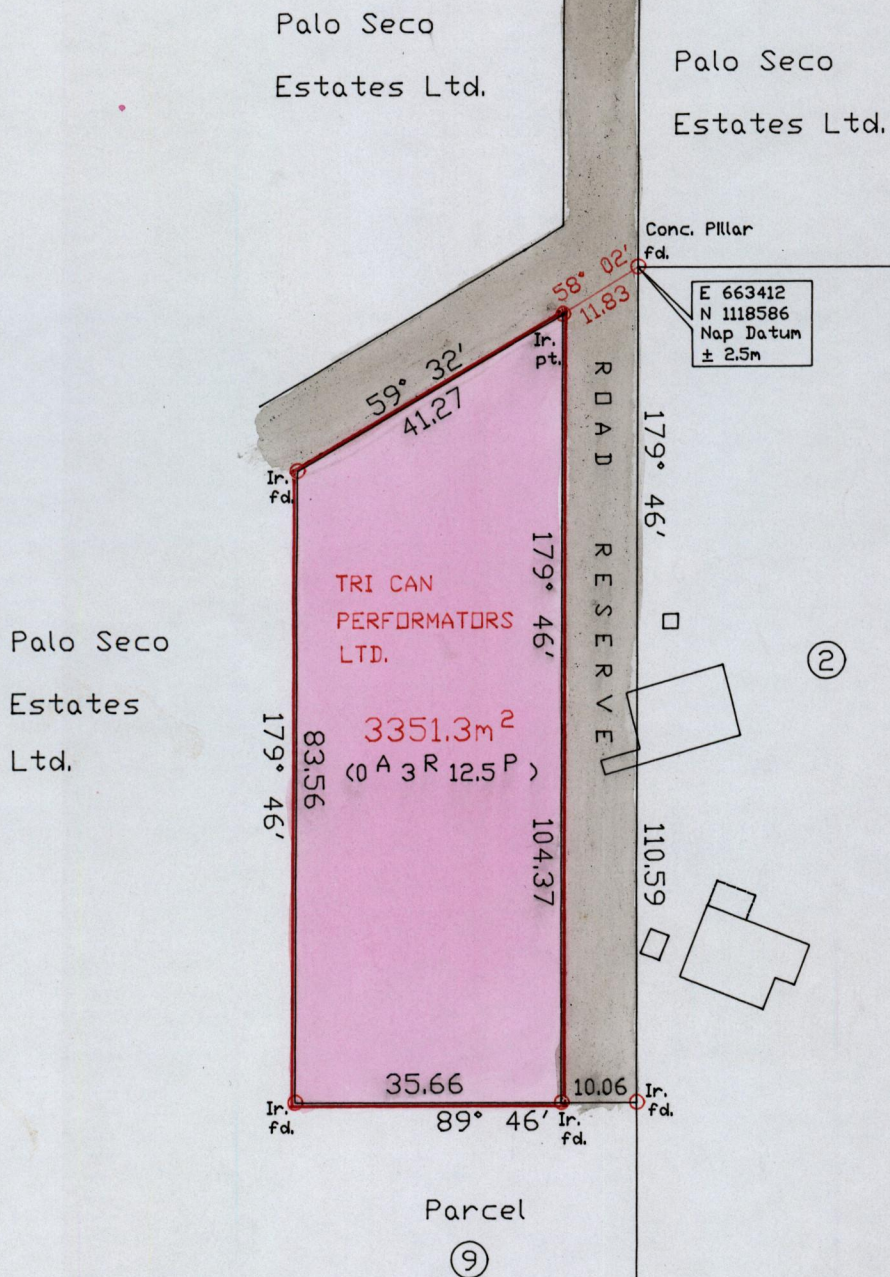


Process ID# 42803
R.P.O. Vol. 166 Fol. 257
C.T. Vol. 3883 Fol. 261

1433

171

Ward of Siparia
County of St. Patrick
Cadastral Sheet G.17.G. $\frac{73B}{3/a}$



Approved

[Signature]
Director of Surveys 2013.1.2

SCALE 1/1000

Note: To obtain Cassini Grid add 18 minutes

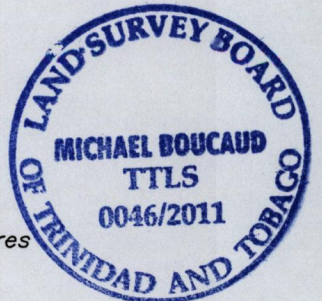
Distances are in metres

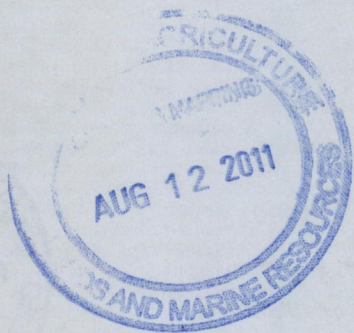
PLAN of a Parcel of land coloured pink in the Ward of Siparia
Containing three thousand, three hundred and fifty one point three square metres
Surveyed by me with due authority in May, June 2010
In accordance with Reg. 25(1) of the Land Surveyors' Regulations 1998,
I certify that this plan is correct.

Checked by *[Signature]*

[Signature] TTLS

Entered C.M.S. on 15.08.2013 Trinidad & Tobago Land Surveyor *[Signature]* 20.11.





1433/171