

U.P.R.N No.....

FOR VESTING ORDER

Cadastral Sheet (E.1 F.) 25E

R.P.O. Vol. 13

Fol. 77

Ward of Tamana

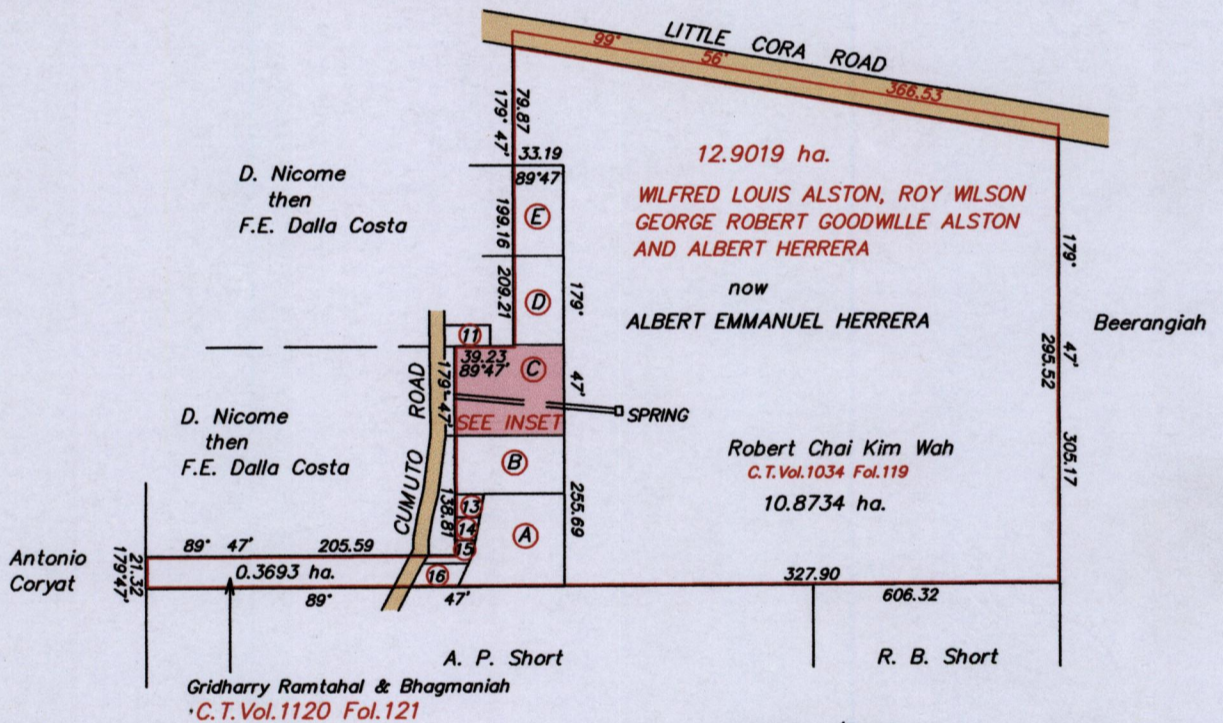
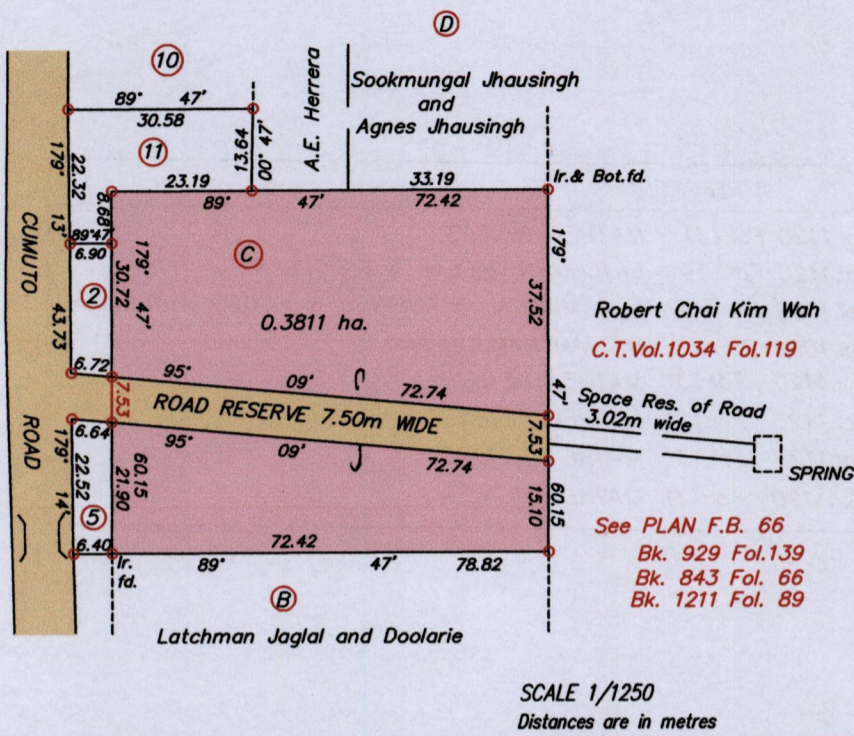
3/c

C.T. Vol. 921

Fol. 111

County of St. Andrew

INSET



Approved by.....  
Director of Surveys 2012.5.14

SCALE 1/5000

Distances are in metres

Co-ordinate are based on GPS finding  
Naparima U.T.M. Zone 20 +/- 3.00m

○ Denotes Iron put unless otherwise stated

Bearings are Cassini Grid based on Solar Observations

Note : To obtain U.T.M. bearings subtract 18 minutes

Plan of a Parcel of land coloured pink in the Ward of Tamana

Containing zero point three eight one one hectare

Surveyed by me, with due authority in November 2010 for Peter Copel

In accordance with Regulation 25 (1) of the Land Surveyors' Regulations 1998,

I certify that this plan is correct.

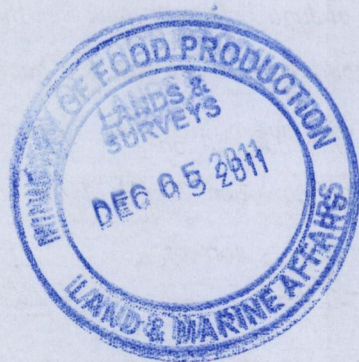
Checked by.....

Entered on..... Trinidad and Tobago Land Surveyor..... 20th November 2011



P.T.O.

PARCELS	AREAS	REFERENCES
A	0.3718 ha	C.T.Vol.1120 Fol.131 MATHEW PETERS
B	0.2808 ha	C.T.Vol.1120 Fol.139 LATCHMAN JAGLAL and DOOLARIE
D	0.1973 ha	C.T.Vol.1069 Fol.463 SOOKMUNGAL JHAUSINGH & AGNES JHAUSINGH
E	0.1998 ha	C.T.Vol.1069 Fol.455 MAUIAH RAMPALLARD
13	265.0 m <sup>2</sup>	C.T.Vol.1120 Fol.131 MATHEW PETERS
14	219.9 m <sup>2</sup>	C.T.Vol.1120 Fol.131 MATHEW PETERS
15	298.5 m <sup>2</sup>	C.T.Vol.1120 Fol.131 MATHEW PETERS
16	495.4 m <sup>2</sup>	C.T.Vol.1120 Fol.131 MATHEW PETERS



14-33/17