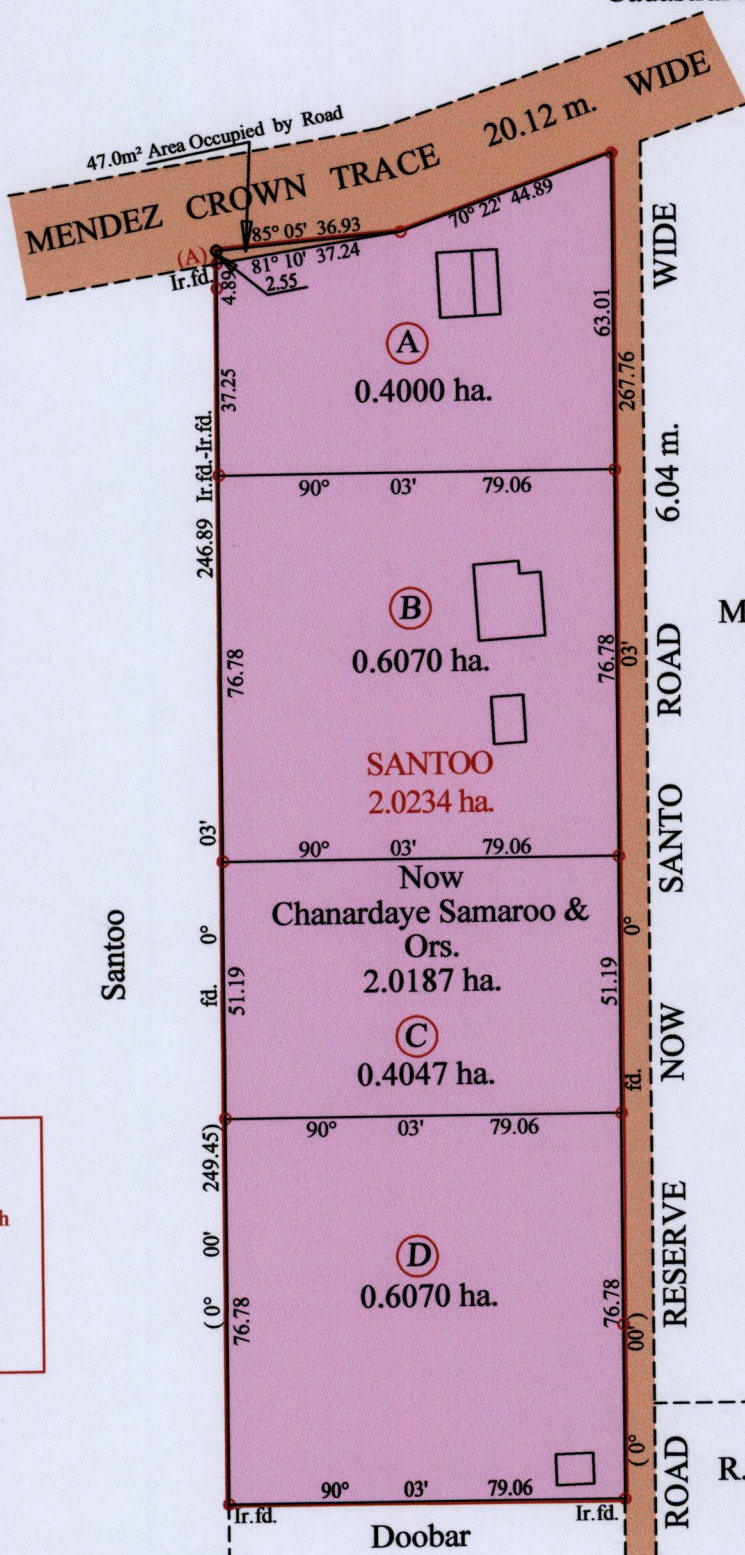


1433

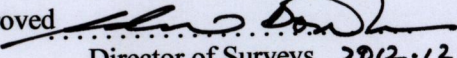
1688

R.P.O. Vol. 568 Fol. 231
C.T. Vol. 1207 Fol. 161

Ward of Siparia
County of St. Patrick
Cadastral Sheet G.18.I 73 B
4/c



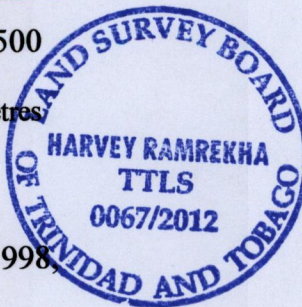
Station (A)
E 0667150
N 1117445
Reading taken with
Handheld G.P.S.
Garmin 76S
U.T.M. Zone 20
Naparima
±10m

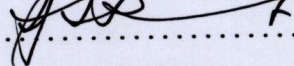
Approved 
Director of Surveys 2012.12.21

Vide Bk. 564 fol. 119

SCALE : 1:1500

o Denotes No Marks
o Denotes Iron put except stated otherwise.
Note: Bearings are cassini grid based on solar observations Distances are in metres
PLAN of 4 Parcels of land coloured pink in the Ward of Siparia
Containing together two point zero one eight seven hectares
Surveyed by me, with due authority, in July 2009
In accordance with Regulation 25 (1) of the Land Surveyors' Regulations 1998,
I certify that this plan is correct.



Checked by  3/12/12

Entered on Trinidad & Tobago Land Surveyor 14.11.2012



1433/168