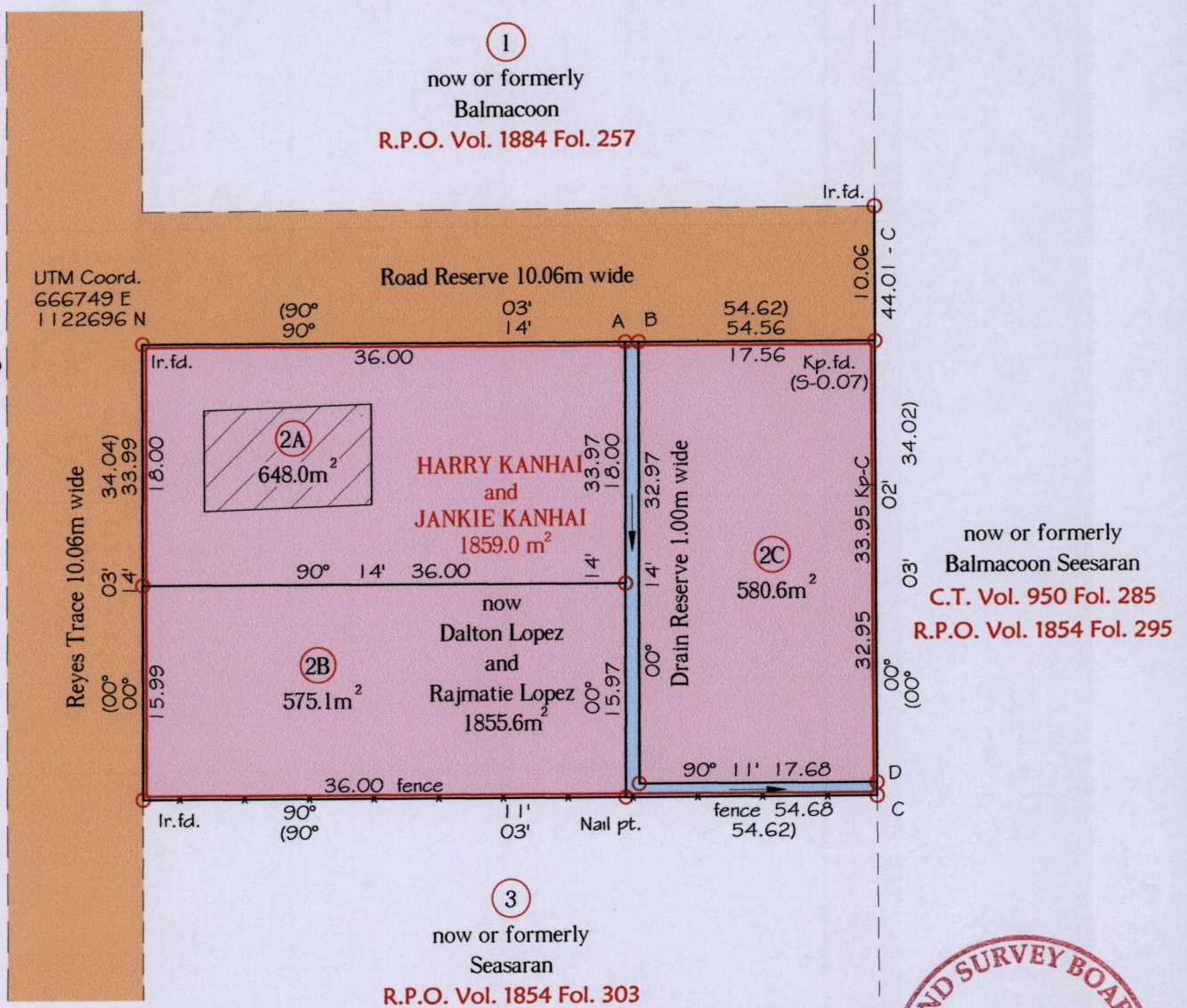
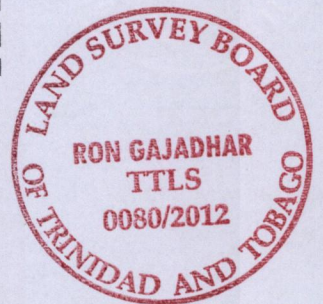


R.P.O Vol. 78 Fol. 449  
 C.T. Vol. 1884 Fol. 249  
 Address - Lot # 2A-2C Cor. Rd. Res. Reyes Trace  
 Siparia.  
 CT-Vol 5571 Fol 347

Ward of Siparia  
 County of St. Patrick  
 Cadastral Sheet (G.13.M), 63E  
 4/c



STATION	BEARING	DISTANCE
A-B	90 ° 14'	1.00
C-D	00 ° 02'	1.00



Note - UTM (Nap Zone 20) Coordinates obtained from hand held GPS receiver ± 5.00m

Approved  
  
 Director of Surveys 2012.12.10

Ref.:- Bk. 780 Fol. 110  
 Bk. 460 Fol. 88  
 Bk. 985 Fol. 155  
 Plan F.J. 3  
 SCALE 1:500

○ Denotes Iron put except stated otherwise.  
 Note: Bearings are Cassini grid based on solar observations Distances are in metres.  
 Plan of 3 Parcels of land coloured pink in the Ward of Siparia.  
 Containing together one thousand eight hundred and three point seven square metres.  
 Surveyed by me, with due authority, in August 2011  
 In accordance with Regulation 25(1) of the Land Surveyors' Regulations 1998,  
 I certify that this plan is correct.

Checked by JA 2012.12.06

Entered on .....

Trinidad & Tobago Land Surveyor 25/09/2012

LOT#	C.T Vol & Folio	Names.
2A	5571 fol 355	Rajmatie Lopez & <sup>Shinelle</sup> Cristal Pushmatie Matadin.
2B	5571 fol 363	Gowria Sookdeo
2C.	5571 fol 371	Camilla Lopez-Maharaj

