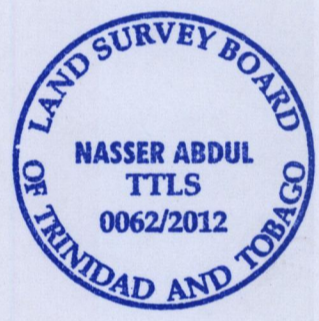
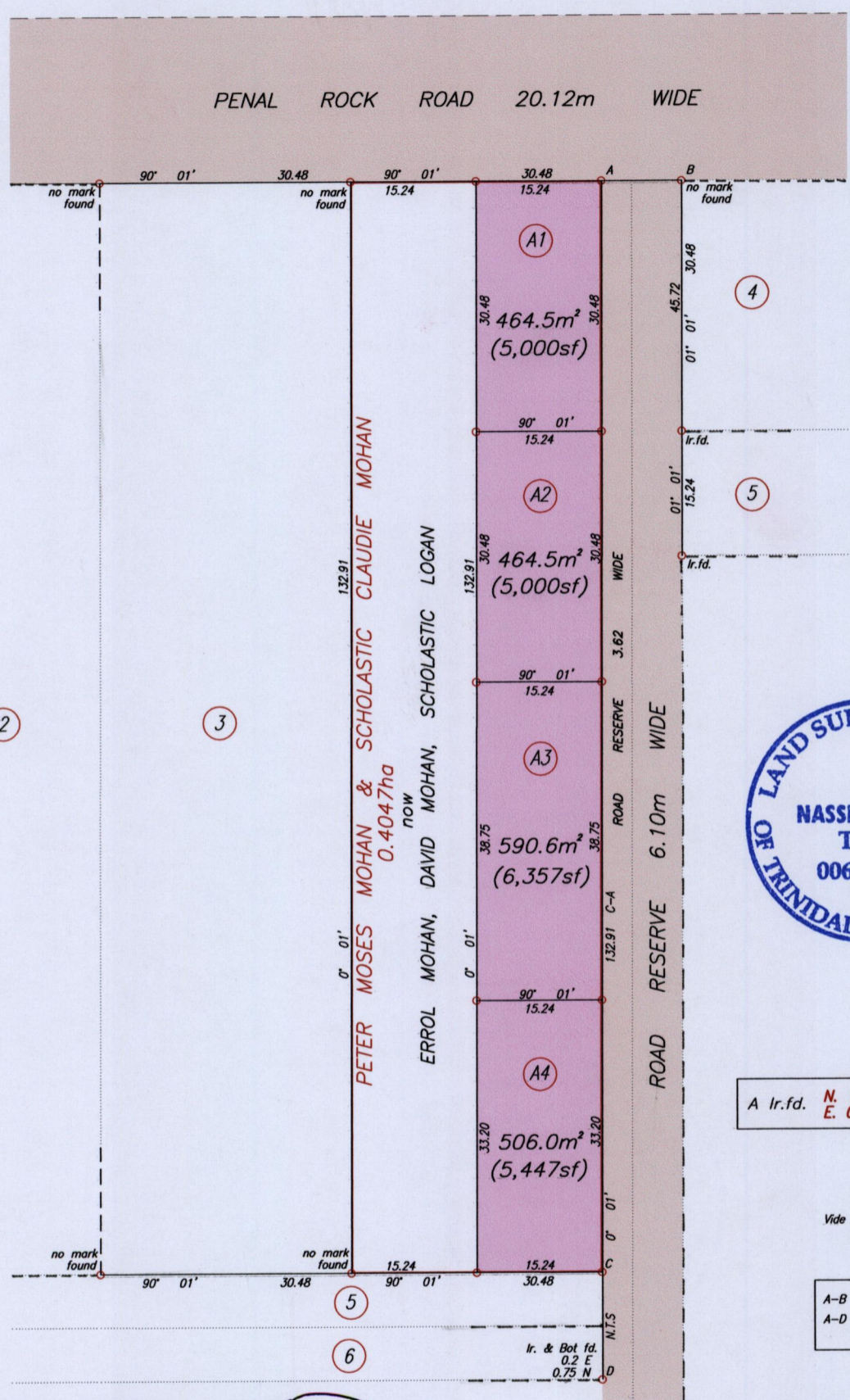


1433

163

R.P.O. Vol. 123 Fol. 117
C.T Vol. 1641 Fol. 341

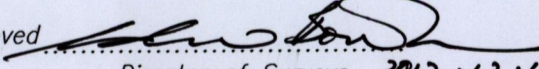
Cadastral Sheet 73C, G.18.C
1/d
Ward of Siparia
County of St. Patrick



A Ir.f.d. N. 1120 596 Hand Held GPS
E. 0671 252 WGS84 Zone20

Vide Bk. 780 Fol. 158
Bk. 725 Fol. 110

A-B 90° 01' 9.61
A-D 179° 57' 193.64
(180° 01' 194.39)

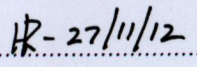
Approved 
Director of Surveys 2012.12.10

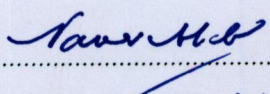
SCALE 1/750
Distances are in metres
● Denotes iron put unless otherwise stated

Bearings are Cassini Grid based on Solar Observations

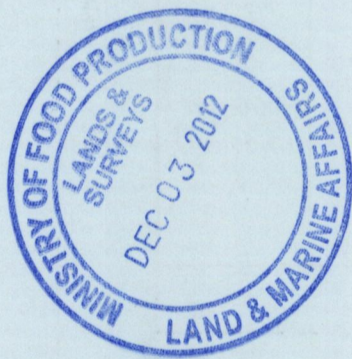
PLAN of four Parcels of land coloured pink in the Ward of Siparia
Containing together two thousand and twenty five point six square meters.

Surveyed by me, with due authority, on 11th May 1991
In accordance with Regulation 25 (1) of the Land Surveyors' Regulations 1998,
I certify that this plan is correct

Checked by  27/11/12


Trinidad & Tobago Land Surveyor 21st November 2012

Entered On..... 2012



1433/163