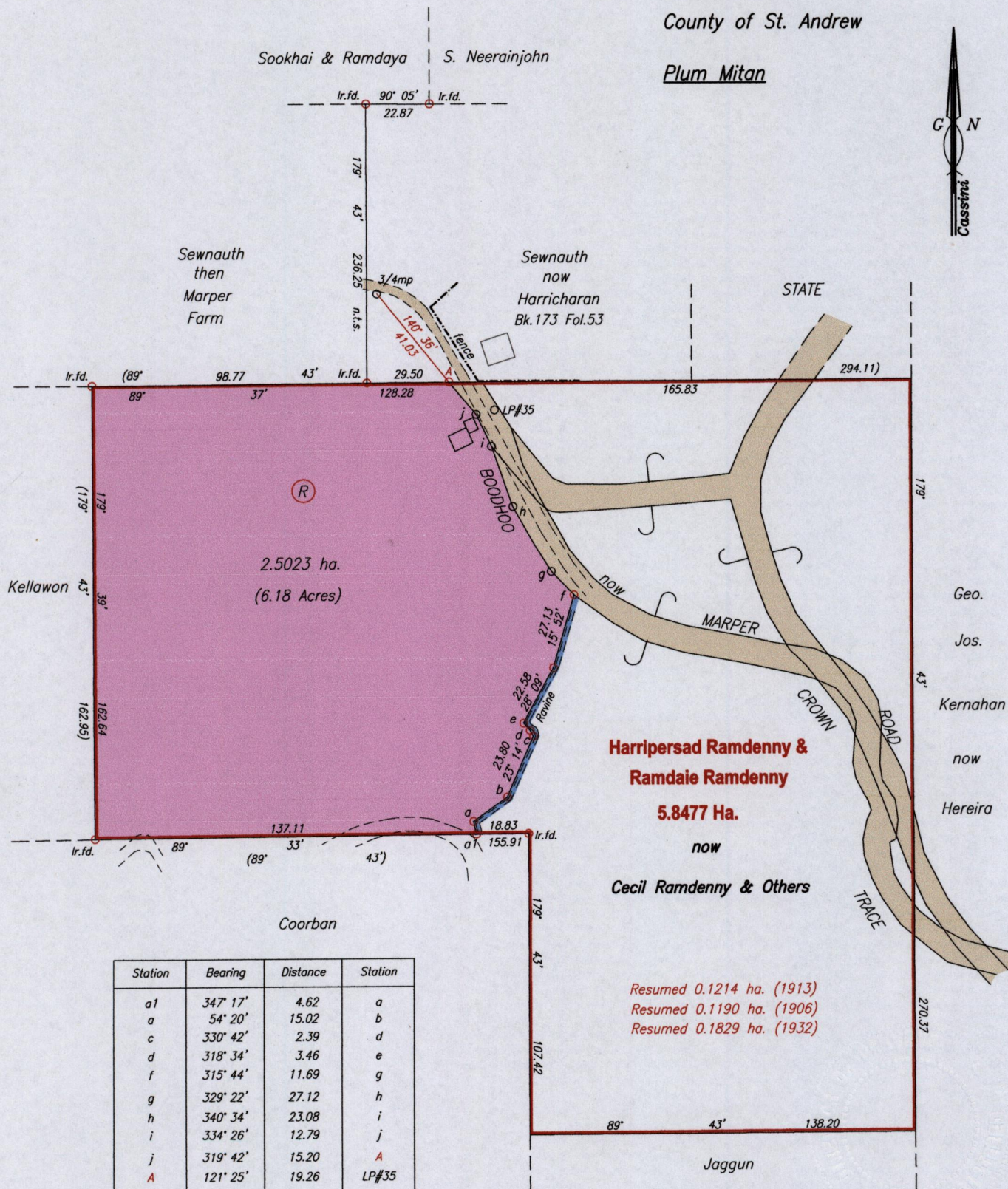
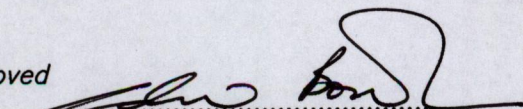


R.P.O. Vol. 52 Fol. 527
 C.T. Vol. 1781 Fol. 225

Cadastral Sheet E.7.H. 36A
 Ward of Turure 3/c
 County of St. Andrew

Plum Mitan

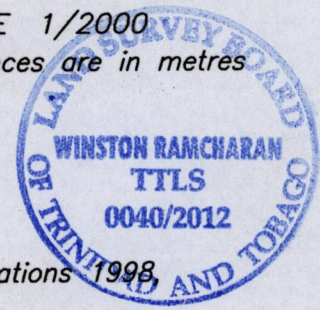


Approved 
 Director of Surveys 2012.5.2)

Bk.856 Fol.110
 A Ir.put N 1161847 Hand Held GPS +/- 5m
 E 709230 UTM proj. WGS84 Zone 20

SCALE 1/2000
 Distances are in metres

o Denotes Ir.put unless otherwise stated
 Bearings are Cassini Grid based on Solar Observations
 PLAN of a Parcel of land coloured pink in the Ward of Turure
 Containing two point five zero two three hectares
 Surveyed by me with due authority in November 2011
 In accordance with Regulation 25 (1) of the Land Surveyors' Regulations 1998,
 I certify that this plan is correct.

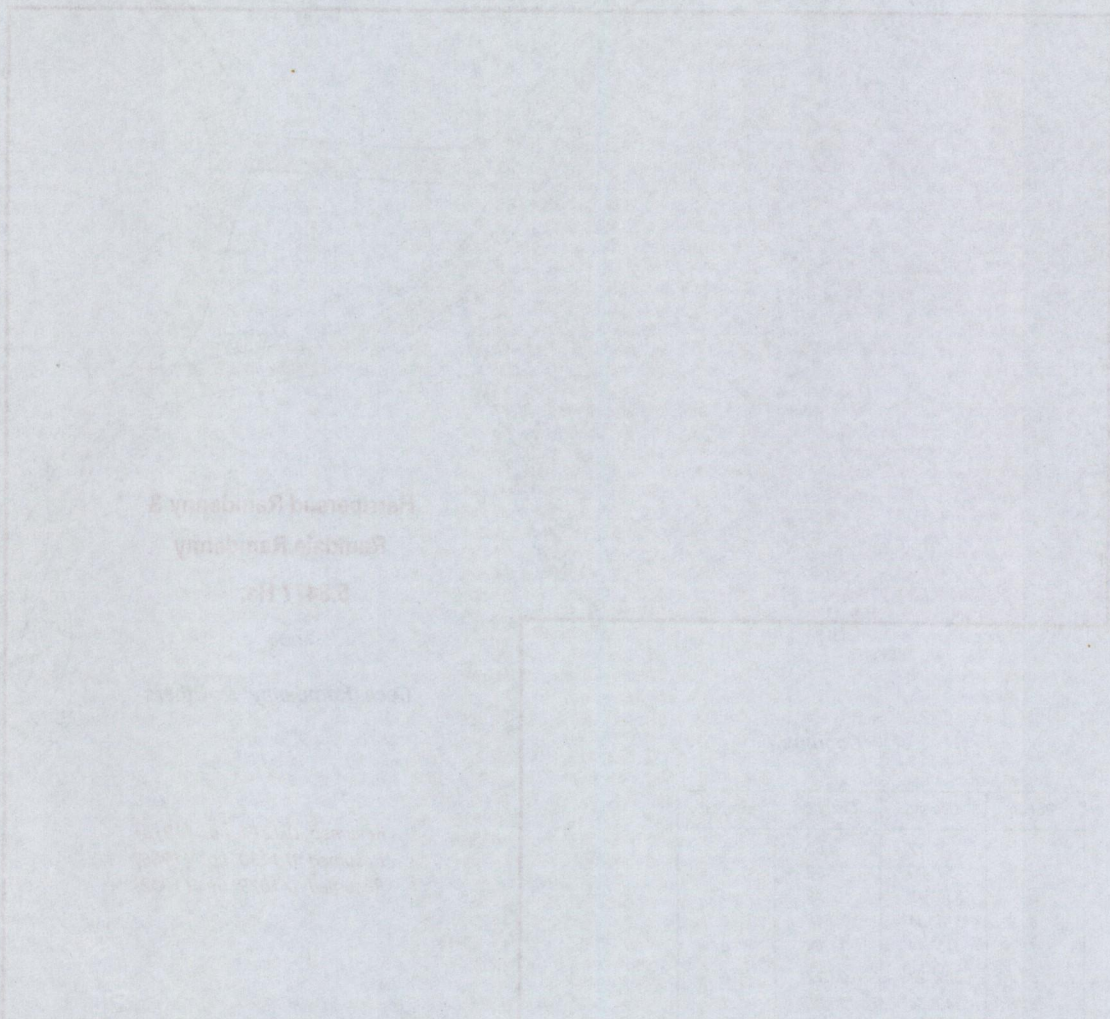


Checked by MA 12.05.14

Winston Ramcharan

Entered on.....

Trinidad & Tobago Land Surveyor 9th May 2012



1433/16