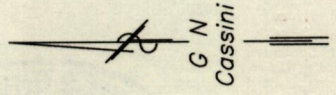


R.P.O. Vol. 135 Fol. 239  
C.T. Vol. 617 Fol. 483

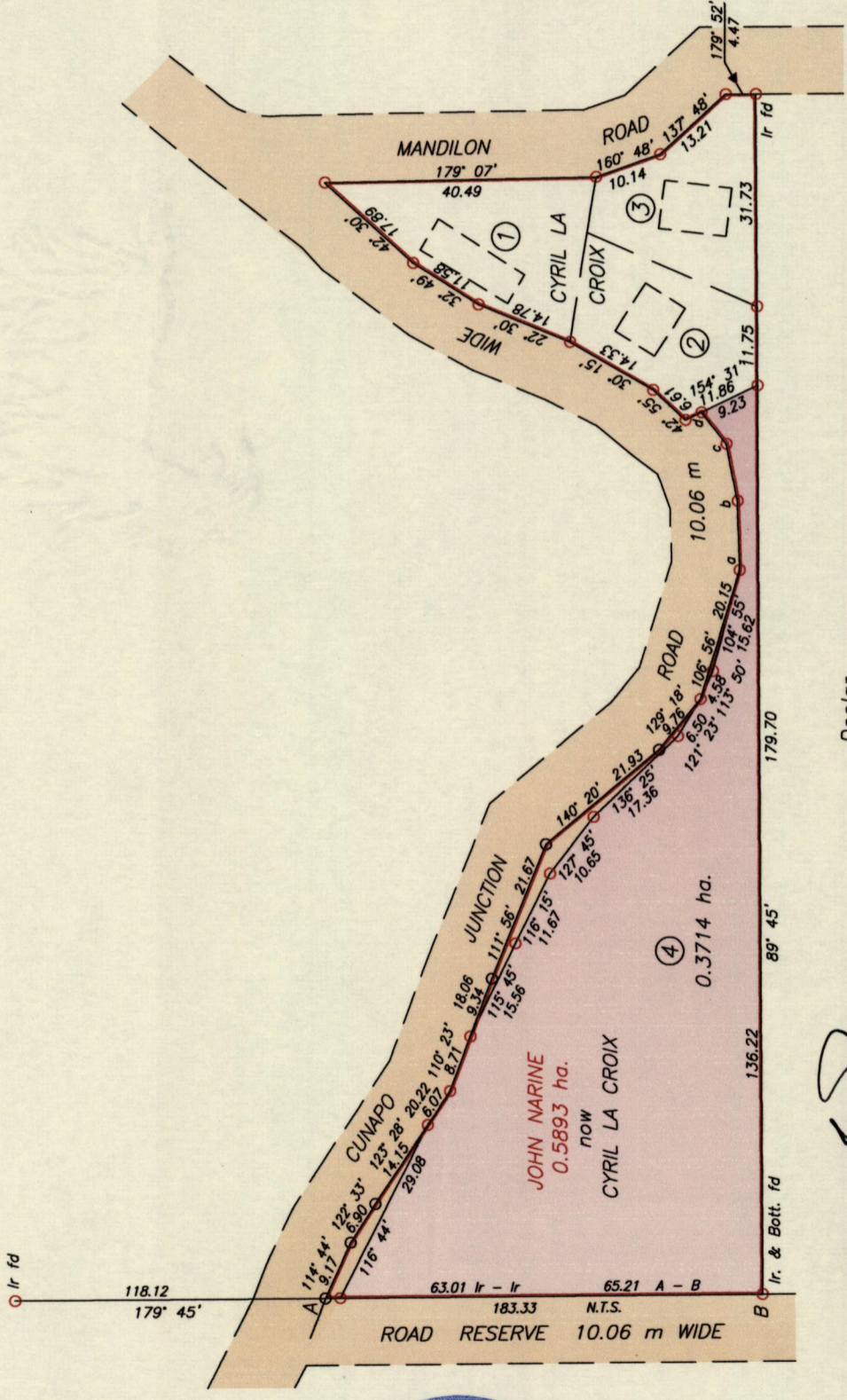
Cadastral Sheet E.2.M. 1/c  
Ward of Turure  
County of St. Andrew

Vide Bk. 156. Fol. 174  
Bk. 160. Fol. 54  
Bk. 183. Fol. 43  
Bk. 1414. Fol. 212



Legend

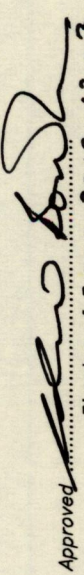
a - b	88° 21' 10.35
b - c	79° 03' 8.71
c - d	51° 57' 6.01



SCALE 1:1000  
Distances are in METRES

B - N 1165281  
E 703922  
Derived from Hand Held GPS

Doolar

Approved:   
Director of Surveys 2012.12.3

- o Denotes No mark put
- o Denotes Iron put unless otherwise stated
- Bearings are Cassini Grid based on Solar Observations

PLAN of a Parcel of land coloured pink in the Ward of Turure

Containing zero point three seven one four Hectares

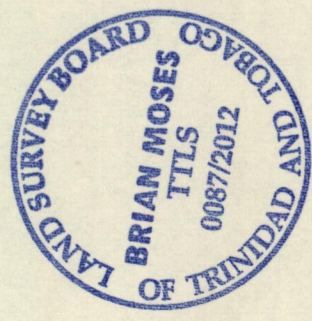
Surveyed by me, with due authority, in August, 2006 & September, 2012

In accordance with Regulation 25 (1) of the Land Surveyors' Regulations 1998,

I certify that this Plan is correct.

Checked by B. R. 28/11/12

Brian Moses  
Trinidad & Tobago Land Surveyor (T.T.L.S.)  
12th Dec. 2012



1433/154

