

1433

148

R.P.O. Vol. 929 Fol. 17

C.T. Vol. Fol.

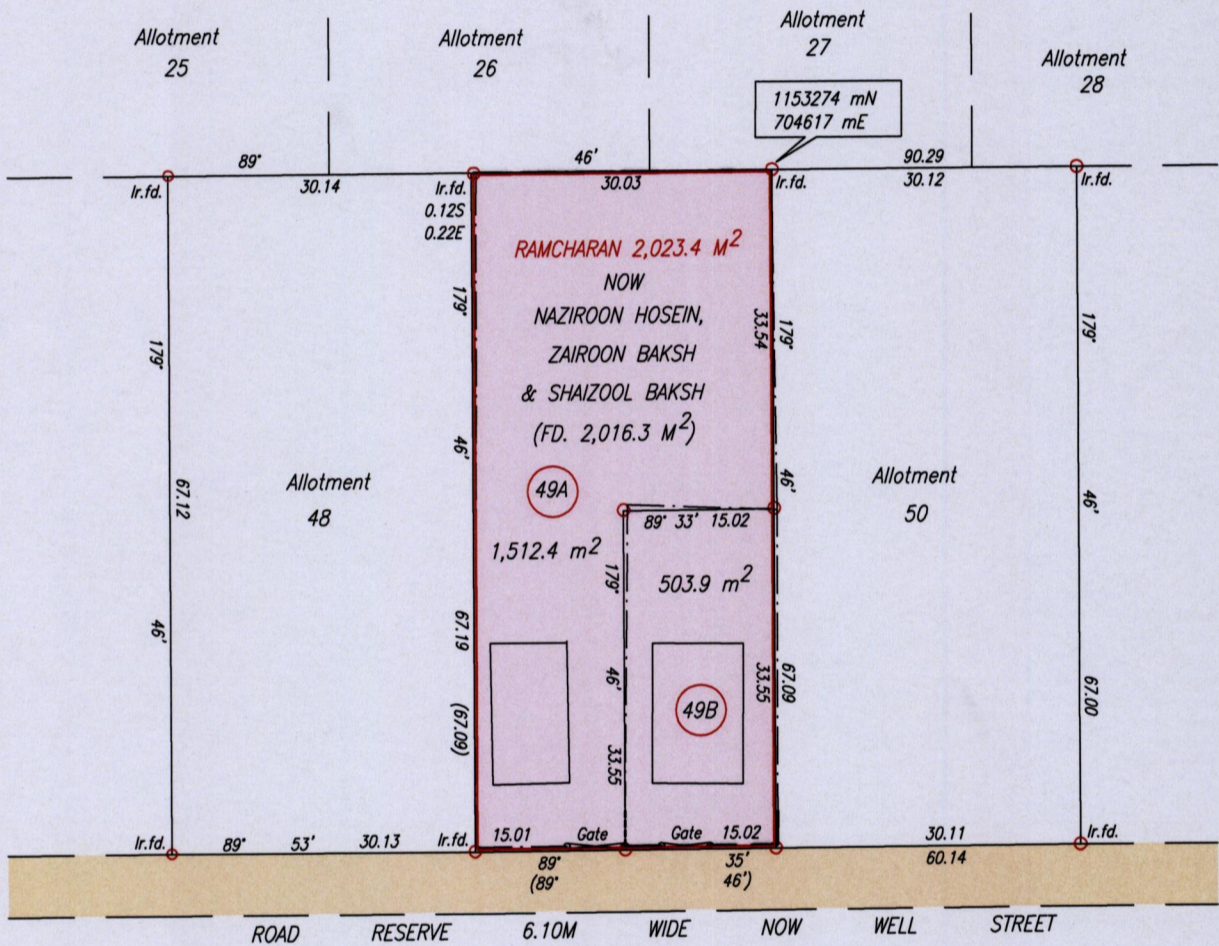
See Plan K.D.1

Ward of Cocal

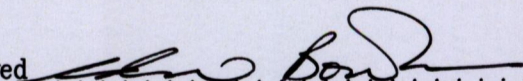
County of Nariva

Cadastral Sheet E.12.M. 45C
1/d

BICHE SETTLEMENT



SCALE 1/750
Distances are in Metres.

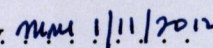
Approved 
Director of Surveys 2012.11.6

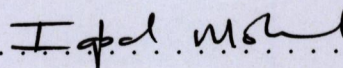
--- wall
- - - wire fence

Bearings are Cassini Grid based on solar Observations

PLAN of two Parcels of land coloured pink in the Ward of Nariva
Containing together two thousand and sixteen point three square metres
Surveyed by me, with due authority, in May, 2011.

In accordance with Regulation 25 (1) of The Land Surveyors' Regulations 1998,
I certify that this plan is correct.

Checked by  1/11/2012



Entered on Trinidad & Tobago Land Surveyor. 15/10/2012



1433/148